

# Abrikosov Superconducting Vortices

---

*Researchers from the Moscow Institute of Physics and Technology, Lomonosov Moscow State University, and the Institute of Solid State Physics of the Russian Academy of Sciences have demonstrated the possibility of detecting Abrikosov vortices penetrating through a superconductor-ferromagnet interface. [30]*

*An international team led by researchers at Princeton University has directly observed a surprising quantum effect in a high-temperature iron-containing superconductor. [29]*

*Superconducting quantum microwave circuits can function as qubits, the building blocks of a future quantum computer. [28]*

*Physicists have shown that superconducting circuits—circuits that have zero electrical resistance—can function as piston-like mechanical quantum engines. The new perspective may help researchers design quantum computers and other devices with improved efficiencies. [27]*

*This paper explains the magnetic effect of the superconductive current from the observed effects of the accelerating electrons, causing naturally the experienced changes of the electric field potential along the electric wire. The accelerating electrons explain not only the Maxwell Equations and the Special Relativity, but the Heisenberg Uncertainty Relation, the wave particle duality and the electron's spin also, building the bridge between the Classical and Quantum Theories.*

*The changing acceleration of the electrons explains the created negative electric field of the magnetic induction, the Higgs Field, the changing Relativistic Mass and the Gravitational Force, giving a Unified Theory of the physical forces. Taking into account the Planck Distribution Law of the electromagnetic oscillators also, we can explain the electron/proton mass rate and the Weak and Strong Interactions.*

*Since the superconductivity is basically a quantum mechanical phenomenon and some entangled particles give this opportunity to specific matters, like Cooper Pairs or other entanglements, as strongly correlated materials and Exciton-mediated electron pairing, we can say that the secret of superconductivity is the quantum entanglement.*

## Contents

The Quest of Superconductivity .....	2
Experiences and Theories .....	3
Nanowire detects Abrikosov vortices.....	3

Scientists discover surprising quantum effect in an exotic superconductor.....	6
Ballistic graphene Josephson junctions enter microwave circuits .....	10
Superconducting qubits can function as quantum engines.....	12
Conventional superconductivity .....	12
Superconductivity and magnetic fields .....	13
Room-temperature superconductivity.....	13
Exciton-mediated electron pairing .....	13
Resonating valence bond theory .....	13
Strongly correlated materials .....	14
New superconductor theory may revolutionize electrical engineering .....	14
Unconventional superconductivity in $\text{Ba}^{0.6}\text{K}^{0.4}\text{Fe}^2\text{As}^2$ from inelastic neutron scattering .....	15
A grand unified theory of exotic superconductivity? .....	15
The role of magnetism .....	15
Concepts relating magnetic interactions, intertwined electronic orders, and strongly correlated superconductivity .....	16
Significance.....	16
Superconductivity's third side unmasked.....	17
Strongly correlated materials .....	17
Fermions and Bosons .....	18
The General Weak Interaction.....	18
Higgs Field and Superconductivity.....	18
Superconductivity and Quantum Entanglement .....	20
Conclusions.....	20
References: .....	21

Author: George Rajna

## The Quest of Superconductivity

Superconductivity seems to contradict the theory of accelerating charges in the static electric current, caused by the electric force as a result of the electric potential difference, since a closed circle wire no potential difference at all. [1]

On the other hand the electron in the atom also moving in a circle around the proton with a constant velocity and constant impulse momentum with a constant magnetic field. This gives the idea of the centripetal acceleration of the moving charge in the closed circle wire as this is the case

in the atomic electron attracted by the proton. Because of this we can think about superconductivity as a quantum phenomenon. [2]

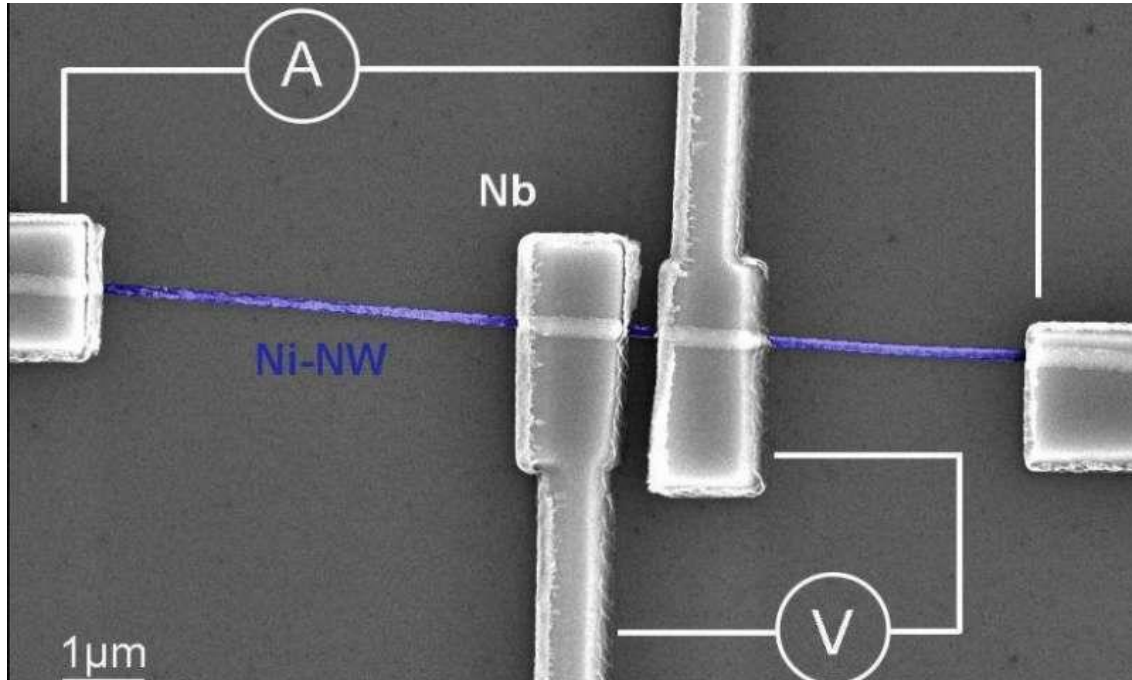
## Experiences and Theories

### Nanowire detects Abrikosov vortices

Researchers from the Moscow Institute of Physics and Technology, Lomonosov Moscow State University, and the Institute of Solid State Physics of the Russian Academy of Sciences have demonstrated the possibility of detecting Abrikosov vortices penetrating through a superconductor-ferromagnet interface. The device considered in their study, published in *Scientific Reports*, is a ferromagnetic nanowire with superconductive electrodes connected to it.

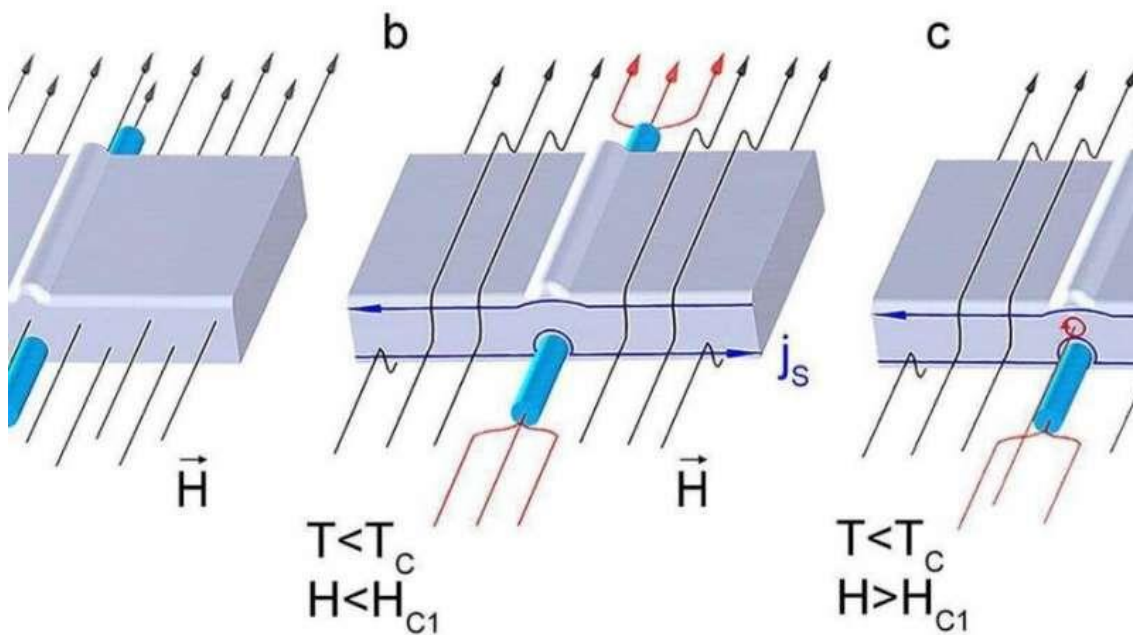
Superconductors are materials that have the property of losing electrical resistance below a certain critical temperature  $T_c$ . Another astonishing property of superconductors is magnetic field expulsion (levitation). This effect results from a current flowing over the superconductor surface, shielding the magnetic field. There are also type II superconductors, which are penetrable for the magnetic flux in the form of quantized vortices at a temperature below critical. This phenomenon was named after Alexey Abrikosov, who originally predicted it. An Abrikosov vortex is a superconducting current vortex with a nonsuperconducting core that carries a magnetic flux quantum.

Olga Skryabina, the first author of the paper and a researcher at the MIPT Laboratory, says: "The research objective was studying the co-existence of antagonistic phenomena in 1-D superconductor-ferromagnet systems. Such systems have recently been of great interest due to their strong magnetic anisotropy with various dimensional and spin effects. These phenomena make such systems a promising choice for functional hybrid nano-devices, e.g., superconducting current converters, spin valves, magnetoresistive RAM. We connected a ferromagnetic nickel nanowire to superconducting niobium electrodes."



The structure microphoto. Grey at the center: superconducting niobium electrodes; blue: a ferromagnetic nickel nanowire. Graduation: 1  $\mu\text{m}$ . A and V (ammeter and voltmeter) indicate the type of current passing through the sample. Credit: O. V. Skryabina et al., Scientific Reports

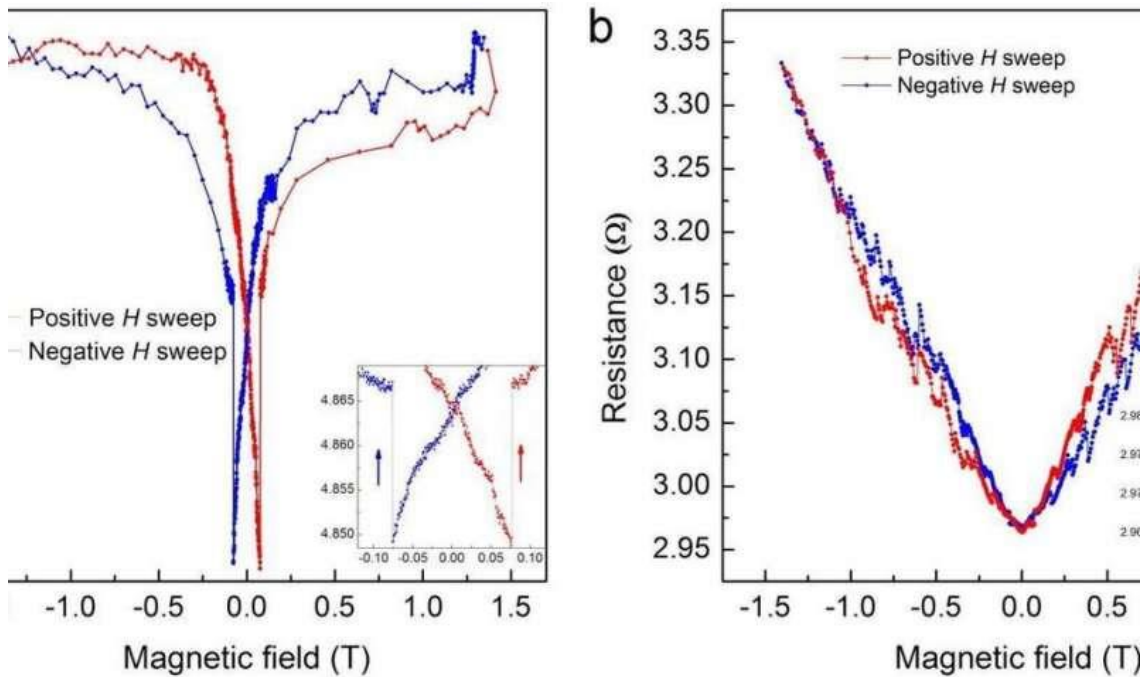
The researchers have investigated a system of two superconducting niobium electrodes connected by a nickel nanowire (Figure 1). It has been found that as the magnetic field varies, the nanowire resistance strongly depends on the effects occurring at the superconductor-ferromagnet boundary.



The processes occurring in the niobium (grey block) / nickel nanowire (blue cylinder) system under

various ambient conditions. (a) The temperature is above critical. The system is in its normal state, the magnetic field (black arrow) is passing through the entire sample. (b) The temperature is below critical. When  $H_c < H < H_{c1}$ , the magnetic field (black arrow) concentrates at the ferromagnetic nanowire (red arrows) and is shielded by the niobium (black arrows.) (c)  $T < T_c$ , as the critical magnetic field strength  $H > H_{c1}$  is exceeded, an Abrikosov vortex penetrates the niobium (marked with the red circle.) . Credit: O. V. Skryabina et al., Scientific Reports

First, the physicists considered the system in its normal state, when the temperature is above the critical one, and the magnetic field equally penetrates all the parts of the structure (Figure 2a.) The sample resistance did not change significantly with the increase of the magnetic field strength. Then the researchers lowered the temperature below the critical value. The niobium electrodes transitioned into a superconducting state, and their resistance dropped to zero. At the same time, the experimenters observed a drastic rise of the system resistance. The only explanation for this was the contribution of the superconductor-ferromagnet boundaries to the resistance. Concurrently, the niobium started conducting shielding currents, and the superconductor began expelling the magnetic field (Figure 2b). These phenomena result in unusual sawtooth magnetic resistance curves, and a shift relative to various sweeps (Figure 3.)



Specimen resistance vs. external magnetic field strength. The blue and red colors show the magnetic field sweep direction. (a) The temperature is above critical. The system is in its normal state, the system resistance variation is low (mostly due to the nickel nanowire reversal magnetization.) (b) The temperature is below the critical superconducting transition temperature. The system resistance variation is greater by an order of magnitude. The curve is sawtooth-shaped with resistance surges corresponding to the Abrikosov vortex penetration/exit. The boxes on both diagrams are enlarged detailed views in the nanowire reversal magnetization range. Credit: O. V. Skryabina et al., Scientific Reports

Olga Skryabina continues: "We placed the sample in a magnetic field parallel to the nanowire centerline. It was found that by measuring the sample resistance under such conditions, we can detect the moment when a magnetic flux quantum enters or exists a superconducting."

A vortex penetration and exit into/from the niobium (Figure 2c) cause the sawtooth electrical resistance. The nickel nanowire in the system acts like a lightning rod that "attracts" the magnetic field. A contact with it weakens the niobium electrode superconductivity, and, thus, localizes the Abrikosov vortices penetration point. The research demonstrates an immense difference between these superconducting chains and conventional electric circuits. There is a need for more research of hybrid superconductor devices to develop more advanced superconducting digital and quantum computers, and supersensitive sensors. [30]

### Scientists discover surprising quantum effect in an exotic superconductor

An international team led by researchers at Princeton University has directly observed a surprising quantum effect in a high-temperature iron-containing superconductor.

Superconductors conduct electricity without resistance, making them valuable for long-distance electricity transmission and many other energy-saving applications. Conventional superconductors operate only at extremely low temperatures, but certain iron-based materials discovered roughly a decade ago can superconduct at relatively high temperatures and have drawn the attention of researchers.

Exactly how superconductivity forms in iron-based materials is something of a mystery, especially since iron's magnetism would seem to conflict with the emergence of superconductivity. A deeper understanding of unconventional materials such as iron-based superconductors could lead eventually to new applications for next-generation energy-saving technologies.

The researchers probed the behavior of iron-based superconductors when impurities—namely atoms of cobalt—are added to explore how superconductivity forms and dissipates. Their findings led to new insights into a 60-year old theory of how superconductivity behaves. The study was published in the journal *Physical Review Letters* this week.

Adding impurities is a useful way to learn about the behavior of superconductors, said M. Zahid Hasan, the Eugene Higgins Professor of Physics at Princeton University, who led the research team. "It is like the way we probe the wave behavior of water in the lake by throwing a stone," he said.

"The way the superconducting properties react to the impurity reveals their secrets with quantum-level detail."

A longstanding idea known as Anderson's theorem predicts that although adding impurities can introduce disorder into a superconductor, in many cases, it will not destroy the superconductivity. The theorem was put forth in 1959 by Nobel Prize-winning physicist Philip Anderson, Princeton's Joseph Henry Professor of Physics, Emeritus. But there are always exceptions to the rule.

A novel quantum phase effect observed in a superconductor. Credit: Hasan research group, Princeton University

Cobalt appears to be one of these exceptions. Contrary to the theory, the addition of cobalt forces the iron-based superconductor to lose its superconducting ability and become like an ordinary metal, in which electricity flows with resistance and wastes its energy as heat.

Until now, it has been unclear how this happens.

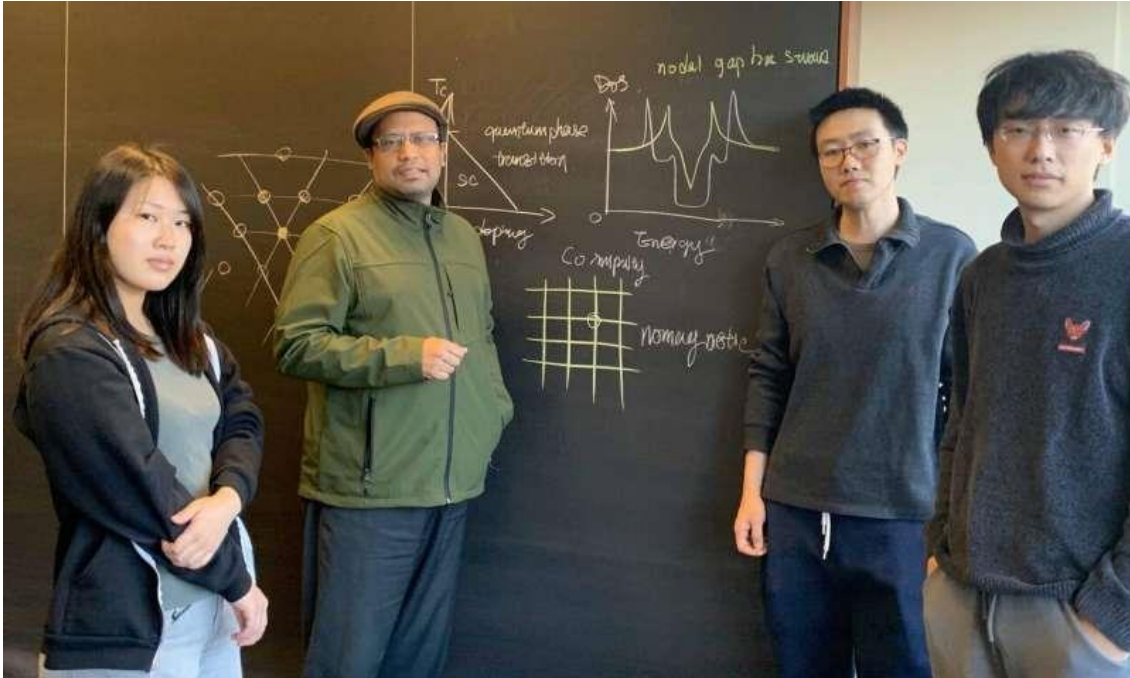
To explore this phenomenon, the Princeton team of researchers used a technique known as scanning tunneling microscopy, which is capable of imaging individual atoms, to study an iron-based superconductor made from lithium, iron and arsenic.

They introduced non-magnetic impurities in the form of cobalt atoms into the superconductor to see how it behaved.

The researchers measured a large number of samples at extremely low temperatures, about minus 460 degrees Fahrenheit (400 degrees milliKelvin), which is colder than outer space by almost ten degrees Fahrenheit. Under these conditions, the researchers located and identified each cobalt atom in the crystal lattice, and then directly measured the effect it had on the superconductivity at both the atomically local scale and the global superconducting properties of the sample.

To do this, the researchers studied over 30 crystals across eight different concentrations at these extremely low temperatures with atomic-level resolution. "There's no guarantee that any given crystal will give us the high-quality data we need," said Songtian Sonia Zhang, a graduate student and co-first author of the study.





From left to right: Graduate student Nana Shumiya, Professor M. Zahid Hasan, Postdoctoral Research Associate Jia-Xin Yin and Graduate Student Yuxiao Jiang. Credit: Zijia Cheng

As a result of this extensive experiment, the team discovered that each cobalt atom has a limited local impact that vanishes an atom or two in distance away from the impurity. However, there is a strong, systematic evolution through a phase transition into a normal, non-superconducting state as the cobalt concentration increases. The superconductivity is eventually fully destroyed by introducing more cobalt atoms.

Superconductivity is due to the pairing of two electrons to form a single quantum state described by a property known as a wave function. This pairing allows the electrons to zip through a material without the typical resistance that happens in everyday metals. The minimum energy required to scatter the electrons and break the pairs is called the "superconducting energy gap."

When cobalt atoms are added, the scattering strength can be described in two ways: the strong (or unitary) limit and the weak (or Born) limit. Scattering at the Born limit, named after physicist Max Born, has the weakest potential to disturb the electron wave functions that are crucial to electron-electron interaction and thus the electron pairing.

By replacing iron atoms, the cobalt atoms behave as Born-limit scatterers. Although Born-limit scatterers have a relatively weak potential to disrupt superconductivity, when many combine they can destroy superconductivity.

The researchers discovered that for the lithium iron arsenide material, scattering at the Born limit is apparently able to violate Anderson's theorem, leading to a quantum phase transition from a superconducting to a non-superconducting state.

Superconducting materials can be described by a feature known as the tunneling spectrum, which provides a description of the behavior of electrons in a material and acts as an electron's energy



distribution profile. The lithium iron arsenide material has what is known as a "S-wave" gap characterized by a flat "U-shaped" bottom in the superconducting energy gap. A fully opened superconducting gap indicates the quality of the superconducting materials.

A novel quantum phase effect observed in a superconductor. Credit: Hasan research group, Princeton University

In a surprising twist, the cobalt impurities not only suppress the superconductivity, they also change the nature of the gap as it evolves from a U-shape into a V-shape. The shape of the superconducting gap usually reflects the "order parameter," which describes the nature of the superconductivity. Such a shape is characteristic of order parameters that only occur in a unique number of high-temperature superconductors and hints at extremely unconventional behavior.

The apparent transformation through a change in the order parameter (for example, reflected in the measurements by the changing in the shape of the superconducting gap) only adds to the quantum puzzle.

This evolution is unusual and prompted the researchers to deepen their investigation. By combining theoretical calculations with magnetic measurements, they were able to confirm the non-magnetic nature of the cobalt scattering.

Since Anderson's theorem states that non-magnetic impurities should have little effect on this type of superconductor, the researchers realized that an alternate theory had to be developed.

In iron-based superconductors, scientists have speculated that there is a sign change for the phase of superconducting order parameter at different "Fermi pockets"—the energy contours that form due to the rules by which electrons occupy the crystalline structure.

"Naively, distinguishing between conventional superconductivity and sign-changing superconductivity requires a phase-sensitive measurement of the superconducting order parameter, which can be extremely challenging," said Ilya Belopolski, a postdoctoral researcher in Hasan's group and co-author of the study. "A beautiful aspect of our experiment is that by considering violations of Anderson's theorem, we can get around this requirement."

In fact, the team discovered that by introducing such a sign change in the order parameter of the superconductivity, they were able to reproduce the odd evolution from the cobalt impurities. Going beyond these initial calculations, the team employed a further three state-of-the-art theoretical methods to demonstrate the impact of the non-magnetic cobalt scatterers on this sign-changing superconductor.

"The fact that three different theoretical models all point to the same explanation demonstrates this is a robust conclusion," said Jia-Xin Yin, a postdoctoral research associate and another co-first author of the study. In the quest for solving the mysteries of superconductivity, complicated models are developed that do not always agree with each other. In this case, Yin said, "the model-independent results unambiguously pin down that this is a sign-changing exotic superconductor not originally considered by Anderson's work." [29]

## Ballistic graphene Josephson junctions enter microwave circuits

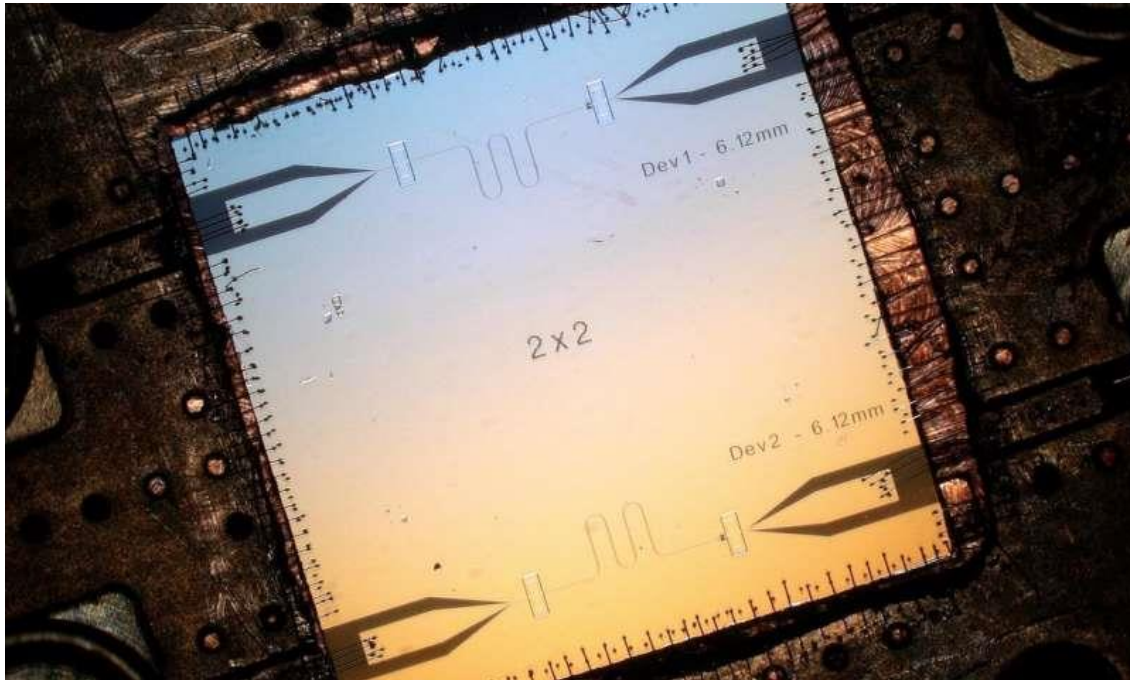
Superconducting quantum microwave circuits can function as qubits, the building blocks of a future quantum computer. A critical component of these circuits, the Josephson junction, is typically made using aluminium oxide. Researchers in the Quantum Nanoscience department at the Delft University of Technology have now successfully incorporated a graphene Josephson junction into a superconducting microwave circuit. Their work provides new insight into the interaction of superconductivity and graphene and its possibilities as a material for quantum technologies.

The essential building block of a [quantum](#) computer is the quantum bit, or [qubit](#). Unlike regular bits, which can either be one or zero, qubits can be one, zero or a superposition of both these states. This last possibility, that bits can be in a superposition of two states at the same time, allows quantum computers to work in ways not possible with classical computers. The implications are profound: Quantum computers will be able to solve problems that will take a regular computer longer than the age of the universe to solve.

There are many ways to create qubits. One of the tried and tested methods is by using superconducting microwave [circuits](#). These circuits can be engineered in such a way that they behave as harmonic oscillators "If we put a charge on one side, it will go through the inductor and oscillate back and forth," said Professor Gary Steele. "We make our qubits out of the different states of this charge bouncing back and forth."

An essential element of quantum microwave circuits is the so-called Josephson junction, which can, for example, consist of a non-superconducting material that separates two layers of superconducting material. Pairs of superconducting electrons can tunnel through this barrier, from one superconductor to the other, resulting in a supercurrent that can flow indefinitely long without any voltage applied.

In state-of-the-art Josephson junctions for quantum circuits, the weak link is a thin layer of aluminium oxide separating two aluminium electrodes. "However, these can only be tuned with the use of a magnetic field, potentially leading to cross-talk and on-chip heating, which can complicate their use in future applications," said Steele. Graphene offers a possible solution. It has proven to host robust supercurrents over micron distances that survive in magnetic fields of up to a few Tesla. However, these devices had thus far been limited to direct current (DC) applications. Applications in microwave circuits, such as qubits or parametric amplifiers, had not been explored.



Close-up of the new a superconducting microwave circuit with a graphene Josephson junction.  
Credit: TU Delft

The research team at Delft University of Technology incorporated a [graphene](#) Josephson junction into a superconducting microwave circuit. By characterizing their device in the DC regime, they showed that their graphene Josephson junction exhibits ballistic supercurrent that can be tuned by the use of a gate voltage, which prevents the device from heating up. Upon exciting the circuit with microwave radiation, the researchers directly observed the Josephson inductance of the junction, which had up to this point not been directly accessible in graphene superconducting devices.

The researchers believe that graphene Josephson junctions have the potential to play an important part in future quantum computers. "It remains to be seen if they can be made into viable qubits, however," said Steele. While the graphene junctions were good enough for building qubits, they were not as coherent as traditional quantum [microwave](#) circuits based on aluminium oxide junctions, so further development of the technology is required. However, in applications that don't require high coherence, gate tunability could be useful now. One such application is in amplifiers, which are also important in quantum infrastructure. Steele: "We are quite excited about using these devices for quantum amplifier applications."

The authors have made all of the data published in the manuscript available in an open repository, including the path all the way back to the data as it was measured from the instrument. In addition, the researchers released all of the software used for measuring the data, analysing the data, and making the plots in the figures under an open-source licence.

The results of the study have been published in *Nature Communications*. [28]

## Superconducting qubits can function as quantum engines

Physicists have shown that superconducting circuits—circuits that have zero electrical resistance—can function as piston-like mechanical quantum engines. The new perspective may help researchers design quantum computers and other devices with improved efficiencies.

The physicists, Kewin Sachtleben, Kahio T. Mazon, and Luis G. C. Rego at the Federal University of Santa Catarina in Florianópolis, Brazil, have published a paper on their work on superconducting qubits in a recent issue of Physical Review Letters.

In their study, the physicists explain that superconducting circuits are functionally equivalent to quantum systems in which quantum particles tunnel in a double-quantum well. These wells have the ability to oscillate, meaning the width of the well changes repeatedly. When this happens, the system behaves somewhat like a piston that moves up and down in a cylinder, which changes the volume of the cylinder. This oscillatory behavior allows work to be performed on the system. The researchers show that, in the double-quantum well, part of this work comes from quantum coherent dynamics, which creates friction that decreases the work output. These results provide a better understanding of the connection between quantum and classical thermodynamic work.

"The distinction between 'classical' thermodynamic work, responsible for population transfer, and a quantum component, responsible for creating coherences, is an important result," Mazon told Phys.org. "The creation of coherences, in turn, generates a similar effect to friction, causing a not-completely-reversible operation of the engine. In our work we have been able to calculate the reaction force caused on the quantum piston wall due to the creation of coherences. In principle this force can be measured, thus constituting the experimental possibility of observing the emergence of coherences during the operation of the quantum engine."

One of the potential benefits of viewing superconducting qubits as quantum engines is that it may allow researchers to incorporate quantum coherent dynamics into future technologies, in particular quantum computers. The physicists explain that a similar behavior can be seen in nature, where quantum coherences improve the efficiency of processes such as photosynthesis, light sensing, and other natural processes.

"Quantum machines may have applications in the field of quantum information, where the energy of quantum coherences is used to perform information manipulation in the quantum regime," Mazon said. "It is worth remembering that even photosynthesis can be described according to the working principles of a quantum machine, so unraveling the mysteries of quantum thermodynamics can help us to better understand and interpret various natural processes." [27]

## Conventional superconductivity

Conventional superconductivity can be explained by a theory developed by Bardeen, Cooper and Schrieffer (BCS) in 1957. In BCS theory, electrons in a superconductor combine to form pairs, called Cooper pairs, which are able to move through the crystal lattice without resistance when an electric voltage is applied. Even when the voltage is removed, the current continues to flow indefinitely, the most remarkable property of superconductivity, and one that explains the keen interest in their technological potential. [3]

## High-temperature superconductivity

In 1986, high-temperature superconductivity was discovered (i.e. superconductivity at temperatures considerably above the previous limit of about 30 K; up to about 130 K). It is believed that BCS theory alone cannot explain this phenomenon and that other effects are at play. These effects are still not yet fully understood; it is possible that they even control superconductivity at low temperatures for some materials. [8]

## Superconductivity and magnetic fields

Superconductivity and magnetic fields are normally seen as rivals – very strong magnetic fields normally destroy the superconducting state. Physicists at the Paul Scherer Institute have now demonstrated that a novel superconducting state is only created in the material CeCoIn<sub>5</sub> when there are strong external magnetic fields. This state can then be manipulated by modifying the field direction. The material is already superconducting in weaker fields, too. In strong fields, however, an additional second superconducting state is created which means that there are two different superconducting states at the same time in the same material. The new state is coupled with an anti-ferromagnetic order that appears simultaneously with the field. The anti-ferromagnetic order from whose properties the researchers have deduced the existence of the superconducting state was detected with neutrons at PSI and at the Institute Laue-Langevin in Grenoble. [6]

## Room-temperature superconductivity

After more than twenty years of intensive research the origin of high-temperature superconductivity is still not clear, but it seems that instead of *electron-phonon* attraction mechanisms, as in conventional superconductivity, one is dealing with genuine *electronic* mechanisms (e.g. by antiferromagnetic correlations), and instead of s-wave pairing, d-waves are substantial. One goal of all this research is room-temperature superconductivity. [9]

## Exciton-mediated electron pairing

Theoretical work by Neil Ashcroft predicted that solid metallic hydrogen at extremely high pressure (~500 GPa) should become superconducting at approximately room-temperature because of its extremely high speed of sound and expected strong coupling between the conduction electrons and the lattice vibrations (phonons). This prediction is yet to be experimentally verified, as yet the pressure to achieve metallic hydrogen is not known but may be of the order of 500 GPa. In 1964, William A. Little proposed the possibility of high temperature superconductivity in organic polymers. This proposal is based on the exciton-mediated electron pairing, as opposed to phonon-mediated pairing in BCS theory. [9]

## Resonating valence bond theory

In condensed matter physics, the resonating valence bond theory (RVB) is a theoretical model that attempts to describe high temperature superconductivity, and in particular the superconductivity in cuprate compounds. It was first proposed by American physicist P. W. Anderson and the Indian theoretical physicist Ganapathy Baskaran in 1987. The theory states that in copper oxide lattices, electrons from neighboring copper atoms interact to form a valence bond, which locks them in place. However, with doping, these electrons can act as mobile Cooper pairs and are able to superconduct. Anderson observed in his 1987 paper that the origins of superconductivity in doped

cuprates was in the Mott insulator nature of crystalline copper oxide. RVB builds on the Hubbard and t-J models used in the study of strongly correlated materials. [10]

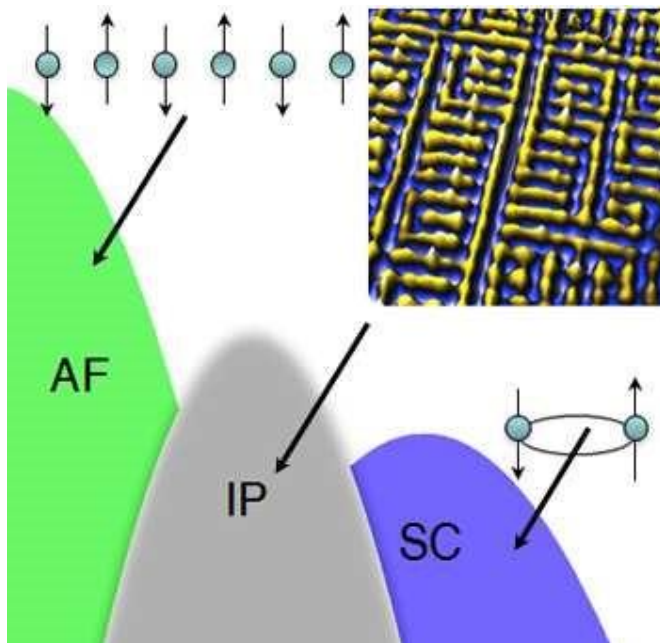
### Strongly correlated materials

Strongly correlated materials are a wide class of electronic materials that show unusual (often technologically useful) electronic and magnetic properties, such as metal-insulator transitions or half-metallicity. The essential feature that defines these materials is that the behavior of their electrons cannot be described effectively in terms of non-interacting entities. Theoretical models of the electronic structure of strongly correlated materials must include electronic correlation to be accurate. Many transition metal oxides belong into this class which may be subdivided according to their behavior, *e.g.* high- $T_c$ , spintronic materials, Mott insulators, spin Peierls materials, heavy fermion materials, quasi-low-dimensional materials, etc. The single most intensively studied effect is probably high-temperature superconductivity in doped cuprates, *e.g.*  $\text{La}_{2-x}\text{Sr}_x\text{CuO}_4$ . Other ordering or magnetic phenomena and temperature-induced phase transitions in many transition-metal oxides are also gathered under the term "strongly correlated materials." Typically, strongly correlated materials have incompletely filled *d*- or *f*-electron shells with narrow energy bands. One can no longer consider any electron in the material as being in a "sea" of the averaged motion of the others (also known as mean field theory). Each single electron has a complex influence on its neighbors.

[11]

### New superconductor theory may revolutionize electrical engineering

High-temperature superconductors exhibit a frustratingly varied catalog of odd behavior, such as electrons that arrange themselves into stripes or refuse to arrange themselves symmetrically around atoms. Now two physicists propose that such behaviors – and superconductivity itself – can all be traced to a single starting point, and they explain why there are so many variations.





An "antiferromagnetic" state, where the magnetic moments of electrons are opposed, can lead to a variety of unexpected arrangements of electrons in a high-temperature superconductor, then finally to the formation of "Cooper pairs" that conduct without resistance, according to a new theory. [22]

## **Unconventional superconductivity in $\text{Ba}^{0.6}\text{K}^{0.4}\text{Fe}_2\text{As}_2$ from inelastic neutron scattering**

In BCS superconductors, the energy gap between the superconducting and normal electronic states is constant, but in unconventional superconductors the gap varies with the direction the electrons are moving. In some directions, the gap may be zero. The puzzle is that the gap does not seem to vary with direction in the iron arsenides. Theorists have argued that, while the size of the gap shows no directional dependence in these new compounds, the sign of the gap is opposite for different electronic states. The standard techniques to measure the gap, such as photoemission, are not sensitive to this change in sign.

But inelastic neutron scattering is sensitive. Osborn, along with Argonne physicist Stephan Rosenkranz, led an international collaboration to perform neutron experiments using samples of the new compounds made in Argonne's Materials Science Division, and discovered a magnetic excitation in the superconducting state that can only exist if the energy gap changes sign from one electron orbital to another.

"Our results suggest that the mechanism that makes electrons pair together could be provided by antiferromagnetic fluctuations rather than lattice vibrations," Rosenkranz said. "It certainly gives direct evidence that the superconductivity is unconventional."

Inelastic neutron scattering continues to be an important tool in identifying unconventional superconductivity, not only in the iron arsenides, but also in new families of superconductors that may be discovered in the future. [23]

## **A grand unified theory of exotic superconductivity?**

### **The role of magnetism**

In all known types of high-T<sub>c</sub> superconductors—copper-based (cuprate), iron-based, and so-called heavy fermion compounds—superconductivity emerges from the "extinction" of antiferromagnetism, the ordered arrangement of electrons on adjacent atoms having anti-aligned spin directions. Electrons arrayed like tiny magnets in this alternating spin pattern are at their lowest energy state, but this antiferromagnetic order is not beneficial to superconductivity.

However if the interactions between electrons that cause antiferromagnetic order can be maintained while the actual order itself is prevented, then superconductivity can appear. "In this situation, whenever one electron approaches another electron, it tries to anti-align its magnetic state," Davis said. Even if the electrons never achieve antiferromagnetic order, these

antiferromagnetic interactions exert the dominant influence on the behavior of the material. "This antiferromagnetic influence is universal across all these types of materials," Davis said.

Many scientists have proposed that these antiferromagnetic interactions play a role in the ability of electrons to eventually pair up with anti-aligned spins—a condition necessary for them to carry current with no resistance. The complicating factor has been the existence of many different types of "intertwined" electronic phases that also emerge in the different types of high-T<sub>c</sub> superconductors—sometimes appearing to compete with superconductivity and sometimes coexisting with it. [24]

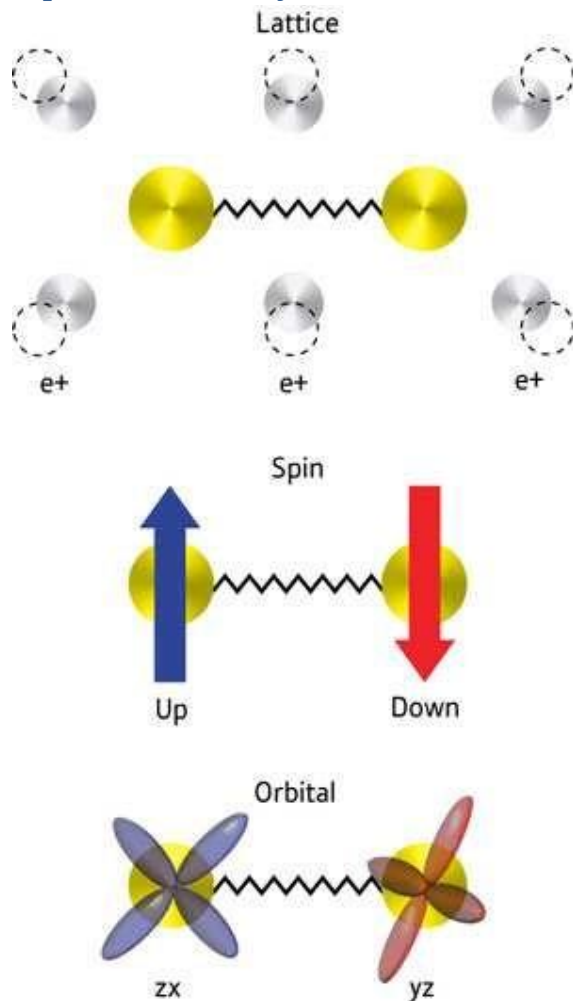
### **Concepts relating magnetic interactions, intertwined electronic orders, and strongly correlated superconductivity**

Unconventional superconductivity (SC) is said to occur when Cooper pair formation is dominated by repulsive electron–electron interactions, so that the symmetry of the pair wave function is other than an isotropic s-wave. The strong, on-site, repulsive electron–electron interactions that are the proximate cause of such SC are more typically drivers of commensurate magnetism. Indeed, it is the suppression of commensurate antiferromagnetism (AF) that usually allows this type of unconventional superconductivity to emerge. Importantly, however, intervening between these AF and SC phases, intertwined electronic ordered phases (IP) of an unexpected nature are frequently discovered. For this reason, it has been extremely difficult to distinguish the microscopic essence of the correlated superconductivity from the often spectacular phenomenology of the IPs. Here we introduce a model conceptual framework within which to understand the relationship between AF electron–electron interactions, IPs, and correlated SC. We demonstrate its effectiveness in simultaneously explaining the consequences of AF interactions for the copper-based, iron-based, and heavy-fermion superconductors, as well as for their quite distinct IPs.

### **Significance**

This study describes a unified theory explaining the rich ordering phenomena, each associated with a different symmetry breaking, that often accompany high-temperature superconductivity. The essence of this theory is an "antiferromagnetic interaction," the interaction that favors the development of magnetic order where the magnetic moments reverse direction from one crystal unit cell to the next. We apply this theory to explain the superconductivity, as well as all observed accompanying ordering phenomena in the copper-oxide superconductors, the iron-based superconductors, and the heavy fermion superconductors. [25]

## Superconductivity's third side unmasked



Shimojima and colleagues were surprised to discover that interactions between electron spins do not cause the electrons to form Cooper pairs in the pnictides. Instead, the coupling is mediated by the electron clouds surrounding the atomic cores. Some of these so-called orbitals have the same energy, which causes interactions and electron fluctuations that are sufficiently strong to mediate superconductivity.

This could spur the discovery of new superconductors based on this mechanism. "Our work establishes the electron orbitals as a third kind of pairing glue for electron pairs in superconductors, next to lattice vibrations and electron spins," explains Shimojima. "We believe that this finding is a step towards the dream of achieving room-temperature superconductivity," he concludes. [17]

## Strongly correlated materials

Strongly correlated materials give us the idea of diffraction patterns explaining the electron-proton mass ratio. [13]

This explains the theories relating the superconductivity with the strong interaction. [14]

## Fermions and Bosons

The fermions are the diffraction patterns of the bosons such a way that they are both sides of the same thing. We can generalize the weak interaction on all of the decaying matter constructions, even on the biological too.

## The General Weak Interaction

The Weak Interactions T-asymmetry is in conjunction with the T-asymmetry of the Second Law of Thermodynamics, meaning that locally lowering entropy (on extremely high temperature) causes for example the Hydrogen fusion. The arrow of time by the Second Law of Thermodynamics shows the increasing entropy and decreasing information by the Weak Interaction, changing the temperature dependent diffraction patterns. The Fluctuation Theorem says that there is a probability that entropy will flow in a direction opposite to that dictated by the Second Law of Thermodynamics. In this case the Information is growing that is the matter formulas are emerging from the chaos. [18] One of these new matter formulas is the superconducting matter.

## Higgs Field and Superconductivity

The simplest implementation of the mechanism adds an extra Higgs field to the gauge theory. The specific spontaneous symmetry breaking of the underlying local symmetry, which is similar to that one appearing in the theory of superconductivity, triggers conversion of the longitudinal field component to the Higgs boson, which interacts with itself and (at least of part of) the other fields in the theory, so as to produce mass terms for the above-mentioned three gauge bosons, and also to the above-mentioned fermions (see below). [16]

The Higgs mechanism occurs whenever a charged field has a vacuum expectation value. In the nonrelativistic context, this is the Landau model of a charged Bose–Einstein condensate, also known as a superconductor. In the relativistic condensate, the condensate is a scalar field, and is relativistically invariant.

The Higgs mechanism is a type of superconductivity which occurs in the vacuum. It occurs when all of space is filled with a sea of particles which are charged, or, in field language, when a charged field has a nonzero vacuum expectation value. Interaction with the quantum fluid filling the space prevents certain forces from propagating over long distances (as it does in a superconducting medium; e.g., in the Ginzburg–Landau theory).

A superconductor expels all magnetic fields from its interior, a phenomenon known as the Meissner effect. This was mysterious for a long time, because it implies that electromagnetic forces somehow become short-range inside the superconductor. Contrast this with the behavior of an ordinary metal. In a metal, the conductivity shields electric fields by rearranging charges on the surface until the total field cancels in the interior. But magnetic fields can penetrate to any distance, and if a magnetic monopole (an isolated magnetic pole) is surrounded by a metal the field can escape without collimating into a string. In a superconductor, however, electric charges move with no dissipation, and this allows for permanent surface currents, not just surface charges. When magnetic fields are introduced at the boundary of a superconductor, they produce surface currents which exactly

neutralize them. The Meissner effect is due to currents in a thin surface layer, whose thickness, the London penetration depth, can be calculated from a simple model (the Ginzburg–Landau theory).

This simple model treats superconductivity as a charged Bose–Einstein condensate. Suppose that a superconductor contains bosons with charge  $q$ . The wavefunction of the bosons can be described by introducing a quantum field,  $\psi$ , which obeys the Schrödinger equation as a field equation (in units where the reduced Planck constant,  $\hbar$ , is set to 1):

$$i \frac{\partial}{\partial t} \psi = \frac{(\nabla - iqA)^2}{2m} \psi.$$

The operator  $\psi(x)$  annihilates a boson at the point  $x$ , while its adjoint  $\psi^\dagger$  creates a new boson at the same point. The wavefunction of the Bose–Einstein condensate is then the expectation value of  $\psi(x)$ , which is a classical function that obeys the same equation. The interpretation of the expectation value is that it is the phase that one should give to a newly created boson so that it will coherently superpose with all the other bosons already in the condensate.

When there is a charged condensate, the electromagnetic interactions are screened. To see this, consider the effect of a gauge transformation on the field. A gauge transformation rotates the phase of the condensate by an amount which changes from point to point, and shifts the vector potential by a gradient:

$$\psi \rightarrow e^{iq\phi(x)} \psi$$

$$A \rightarrow A + \nabla\phi.$$

When there is no condensate, this transformation only changes the definition of the phase of  $\psi$  at every point. But when there is a condensate, the phase of the condensate defines a preferred choice of phase.

The condensate wave function can be written as

$$\psi(x) = \rho(x) e^{i\theta(x)},$$

where  $\rho$  is real amplitude, which determines the local density of the condensate. If the condensate were neutral, the flow would be along the gradients of  $\theta$ , the direction in which the phase of the Schrödinger field changes. If the phase  $\theta$  changes slowly, the flow is slow and has very little energy. But now  $\theta$  can be made equal to zero just by making a gauge transformation to rotate the phase of the field.

The energy of slow changes of phase can be calculated from the Schrödinger kinetic energy,

$$H = \frac{1}{2m} |(qA + \nabla)\psi|^2,$$

and taking the density of the condensate  $\rho$  to be constant,

$$H \approx \frac{\rho^2}{2m} (qA + \nabla\theta)^2.$$

Fixing the choice of gauge so that the condensate has the same phase everywhere, the electromagnetic field energy has an extra term,

$$\frac{q^2 \rho^2}{2m} A^2.$$

When this term is present, electromagnetic interactions become short-ranged. Every field mode, no matter how long the wavelength, oscillates with a nonzero frequency. The lowest frequency can be read off from the energy of a long wavelength A mode,

$$E \approx \frac{\dot{A}^2}{2} + \frac{q^2 \rho^2}{2m} A^2.$$

This is a harmonic oscillator with frequency

$$\sqrt{\frac{1}{m} q^2 \rho^2}.$$

The quantity  $|\psi|^2$  ( $=\rho^2$ ) is the density of the condensate of superconducting particles.

In an actual superconductor, the charged particles are electrons, which are fermions not bosons. So in order to have superconductivity, the electrons need to somehow bind into Cooper pairs. [12]

The charge of the condensate  $q$  is therefore twice the electron charge  $e$ . The pairing in a normal superconductor is due to lattice vibrations, and is in fact very weak; this means that the pairs are very loosely bound. The description of a Bose–Einstein condensate of loosely bound pairs is actually more difficult than the description of a condensate of elementary particles, and was only worked out in 1957 by Bardeen, Cooper and Schrieffer in the famous BCS theory. [3]

## Superconductivity and Quantum Entanglement

We have seen that the superconductivity is basically a quantum mechanical phenomenon and some entangled particles give this opportunity to specific matters, like Cooper Pairs or other entanglements, as strongly correlated materials and Exciton-mediated electron pairing. [26]

## Conclusions

Probably in the superconductivity there is no electric current at all, but a permanent magnetic field as the result of the electron's spin in the same direction in the case of the circular wire on a low temperature. [6]

We think that there is an electric current since we measure a magnetic field. Because of this saying that the superconductivity is a quantum mechanical phenomenon.

Since the acceleration of the electrons is centripetal in a circular wire, in the atom or in the spin, there is a steady current and no electromagnetic induction. This way there is no changing in the Higgs field, since it needs a changing acceleration. [18]



The superconductivity is temperature dependent; it means that the General Weak Interaction is very relevant to create this quantum state of the matter. [19]

We have seen that the superconductivity is basically a quantum mechanical phenomenon and some entangled particles give this opportunity to specific matters, like Cooper Pairs or other entanglements. [26]

## References:

- [1] [https://www.academia.edu/3833335/The Magnetic field of the Electric current](https://www.academia.edu/3833335/The_Magnetic_field_of_the_Electric_current)
- [2] [https://www.academia.edu/4239860/The Bridge between Classical and Quantum Mechanics](https://www.academia.edu/4239860/The_Bridge_between_Classical_and_Quantum_Mechanics)
- [3] [http://en.wikipedia.org/wiki/BCS theory](http://en.wikipedia.org/wiki/BCS_theory)
- [4] [http://en.wikipedia.org/wiki/Meissner effect#cite note-3](http://en.wikipedia.org/wiki/Meissner_effect#cite_note-3)
- [5] [http://en.wikipedia.org/wiki/London equations](http://en.wikipedia.org/wiki/London_equations)
- [6] Superconductivity switched on by magnetic field <http://phys.org/news/2013-12-superconductivity-magnetic-field.html#jCp>
- [7] <http://en.wikipedia.org/wiki/Superconductivity>
- [8] [http://en.wikipedia.org/wiki/High-temperature superconductivity](http://en.wikipedia.org/wiki/High-temperature_superconductivity)
- [9] [http://en.wikipedia.org/wiki/Room-temperature superconductor](http://en.wikipedia.org/wiki/Room-temperature_superconductor)
- [10] [http://en.wikipedia.org/wiki/Resonating valence bond theory](http://en.wikipedia.org/wiki/Resonating_valence_bond_theory)
- [11] [http://en.wikipedia.org/wiki/Strongly correlated material](http://en.wikipedia.org/wiki/Strongly_correlated_material)
- [12] [http://en.wikipedia.org/wiki/Cooper pair](http://en.wikipedia.org/wiki/Cooper_pair)
- [13] [https://www.academia.edu/3834454/3 Dimensional String Theory](https://www.academia.edu/3834454/3_Dimensional_String_Theory)
- [14] [http://en.wikipedia.org/wiki/Color superconductivity](http://en.wikipedia.org/wiki/Color_superconductivity)
- [15] [http://en.wikipedia.org/wiki/Fermi surface](http://en.wikipedia.org/wiki/Fermi_surface)
- [16] [http://en.wikipedia.org/wiki/Higgs mechanism](http://en.wikipedia.org/wiki/Higgs_mechanism)
- [17] Superconductivity's third side unmasked <http://phys.org/news/2011-06-superconductivity-side-unmasked.html#nRlv>
- [18] [https://www.academia.edu/4158863/Higgs Field and Quantum Gravity](https://www.academia.edu/4158863/Higgs_Field_and_Quantum_Gravity)

- [19] [https://www.academia.edu/4221717/General Weak Interaction](https://www.academia.edu/4221717/General_Weak_Interaction)
- [20] Einstein on Superconductivity <http://arxiv.org/pdf/physics/0510251/>
- [21] Conventional Superconductivity <http://phys.org/news150729937.html#jCp>
- [22] <http://phys.org/news/2013-12-superconductor-theory-revolutionize-electrical.html#jCp>
- [23] <http://phys.org/news150729937.html#jCp>
- [24] <http://phys.org/news/2013-10-grand-theory-exotic-superconductivity.html#jCp>
- [25] <http://www.pnas.org/content/early/2013/10/09/1316512110.full.pdf+html>
- [26] The Secret of Quantum Entanglement  
[https://www.academia.edu/7229968/The Secret of Quantum Entanglement](https://www.academia.edu/7229968/The_Secret_of_Quantum_Entanglement)
- [27] Superconducting qubits can function as quantum engines <https://phys.org/news/2017-10-superconducting-qubits-function-quantum.html>
- [28] Ballistic graphene Josephson junctions enter microwave circuits  
<https://phys.org/news/2018-10-ballistic-graphene-josephson-junctions-microwave.html>
- [29] Scientists discover surprising quantum effect in an exotic superconductor  
<https://phys.org/news/2019-11-scientists-quantum-effect-exotic-superconductor.html>
- [30] Nanowire detects Abrikosov vortices  
<https://phys.org/news/2019-12-nanowire-abrikosov-vortices.html>