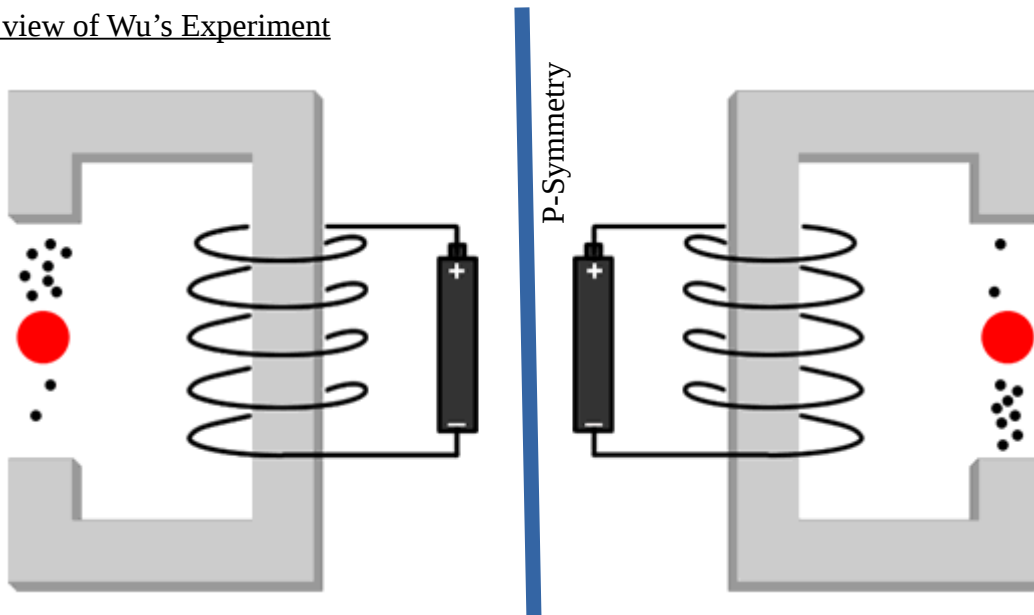


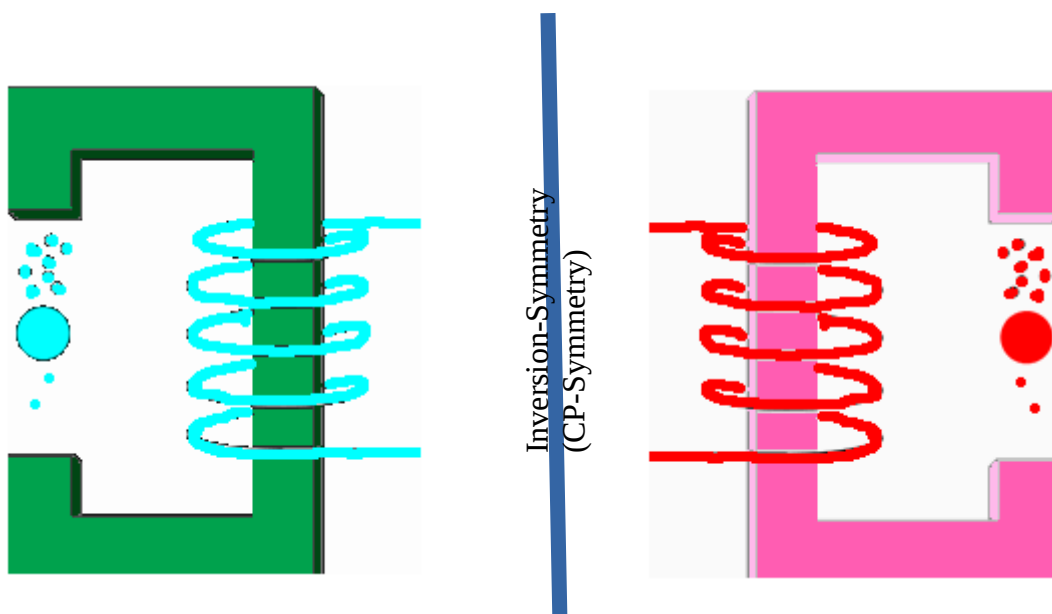
How the Wu experiment can be interpreted as a Pseudo Symmetry Violation. (Hypothesis) (What the Cat saw.)

This hypothesis will show how you can interpret the Wu experiment as a Pseudo Symmetry Violation. The results greatly shocked the physics community as it violates strong held beliefs in Symmetry (Noether's theorem, laws of conservation, etc).

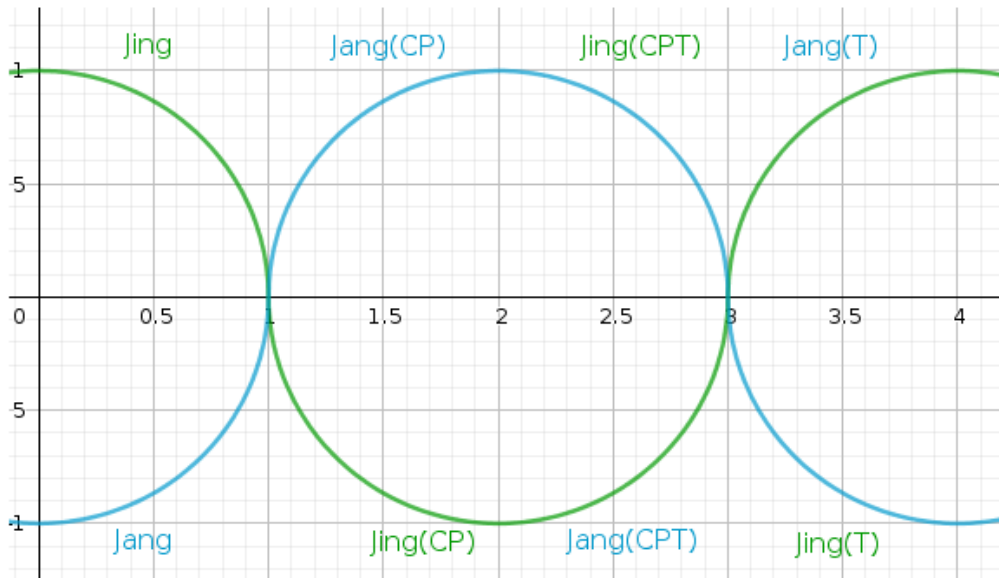
Simplistic view of Wu's Experiment



Basically this experiment is believed to show how there is a Parity Violation in the electro-weak force and you can identify which symmetry you are in. There is nothing wrong with this experiment it would show a parity violation, but if we interpret the experiment with a different concept we can say a P-symmetry does not exist on its own and why you can only have CP-symmetry and a CPT-symmetry and maintain symmetry laws.



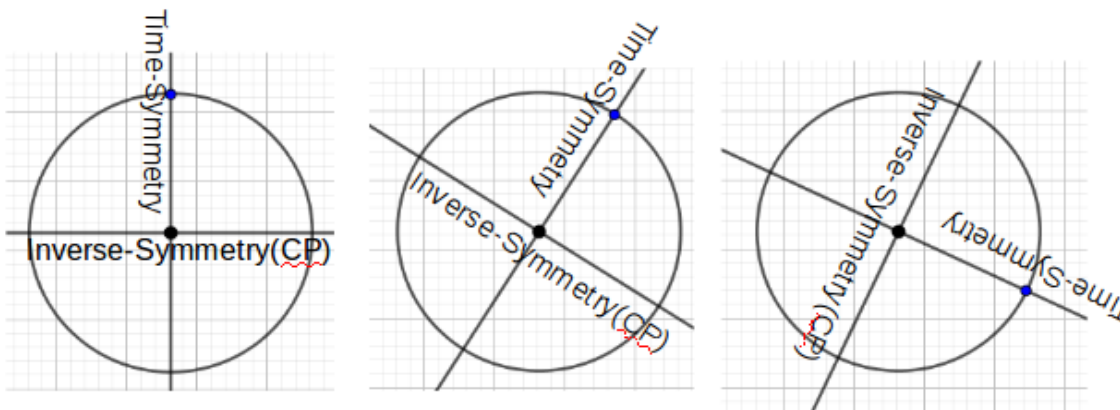
$$\text{jingSC}(x) = \sqrt{1 - \left(\left| 2 - 4 \left(\frac{x-1}{4} - \left\lfloor \frac{x-1}{4} \right\rfloor \right) \right| - 1 \right)^2} \text{sgn} \left(\left| 2 - 4 \left(\frac{x}{4} - \left\lfloor \frac{x}{4} \right\rfloor \right) \right| - 1 \right)$$



$$\text{jangSC}(x) = \sqrt{1 - \left(\left| 2 - 4 \left(\frac{x+1}{4} - \left\lfloor \frac{x+1}{4} \right\rfloor \right) \right| - 1 \right)^2} \text{sgn} \left(\left| 2 - 4 \left(\frac{x-2}{4} - \left\lfloor \frac{x-2}{4} \right\rfloor \right) \right| - 1 \right)$$

How an accelerating electric field would appear if SC Relativity is applied .It is an oscillation of Inverse symmetries .Quantum spin is a measurement of Jing,Jang symmetry(spin without spin,time 180° phase difference) .

A anti particle in our frame of reference is a partial in our Inversion and visa versa. You can never violate this type of symmetry,whatever experiment you perform symmetry is just an inversion .Quantum entanglement is expand by 180° phase difference ,polarisers just accelerate the field into different frames of reference.



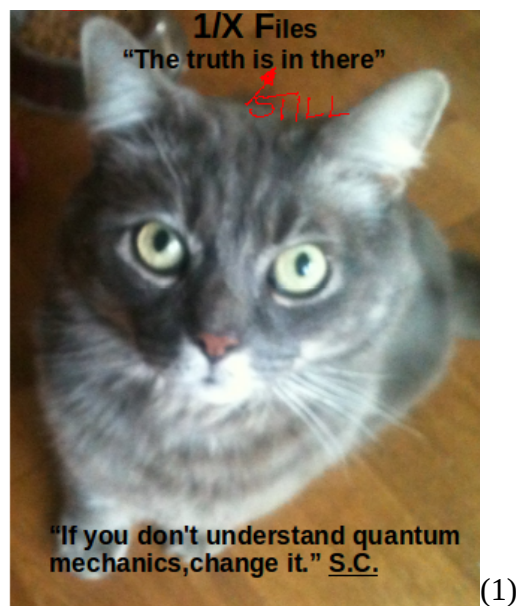
How applying SC Relativity to an accelerating electric field appears to our frame of ref. Symmetry itself rotates (How Special relativity is cyclic) in a Cyclic spacial-Time continuum.

You can only change your rotation in a Cyclic Spacial-Time Continuum by acceleration and velocity is just your rotation.

Conclusion

With a slightly different conceptual idea applied to an electric field I believe many things in Physic,Astronomy can be answered(far to many to mention).

I don't believe this type of inversion symmetry will change any of the laws of physics,but give some different reasoning. Maybe we actually are are own inverse symmetry hidden in plan sight . Maybe Mathematics,Physics and Astronomy need a good dose of looking at with different conceptual ideas ?.



Bryn.S.Cat

References

Wikipedia, the free encyclopedia (<https://en.wikipedia.org>).

Various videos from youtube (<https://www.youtube.com/>).

Wu experiment images

Mirror Symmetry(David M. Harrison)

Document released under a Creative Commons License.

<https://faraday.physics.utoronto.ca/PVB/Harrison/Parity/Parity.html>).

Accelerated Relativistic Electric Field Charge,parity,time Symmetry.

<http://vixra.org/abs/1901.0210>

(1) No quantum,virtual,imaginary are real cats were injured in this conceptual hypothesis.