

The Age of the Universe Predicted by a Time-Varying G Model?

By: *Dr. Christopher Pilot
Department of Physics
Gonzaga University
Spokane, WA 99202*

pilot@gonzaga.edu

I INTRODUCTION

Recently, it has been observed that the universe is much less old than previously thought [1] [2] [3]. The latest galaxy studies indicate that the rate of expansion is about 9 percent faster than previous estimates. Instead of being 13.8 billion years old, current estimates now place the age of the universe at a more modest age of, 12.5 – 13 Gyr. As stated by members of the research team concerning the latest findings, “there becomes a very strong likelihood that we’re missing something in the cosmological model”. As indicated in the title of the work, there now is “stronger evidence for physics beyond Λ CDM”.

In this short note we would like to bring to the attention of the reader that a cosmologically time-varying G can accommodate such a result. As a particular example, we refer the reader to reference [4]. In particular, see Figure/Graph 6a, in appendix D, in that reference, which we reproduce here as Figure 1. This figure replicates exactly the newest age without any modifications or revisions of existing cosmological parameters as determined by the Planck XIII collaboration [5]. Figure 1 gives the “look back” times for three specific models, the Λ CDM model, model A, and, model B, as a function of the cosmic scale parameter, “ a ”. Models, A, and B, are two specific time-varying G models. Specifically this figure graphs the age correction factors, F , for the various models under consideration. The specific values, as determined in reference [4], are $F = (.9559, .8688, .9018)$ for models, (Λ CDM, model A, model B), respectively. We assumed $\Omega_{RAD} = .000083$, $\Omega_{MATTER} = .3089$, and $\Omega_{\Lambda} = .6911$ as our input values, as determined by the Planck XIII collaboration. With these values for the age correction factor and a Hubble value equal to, $H_0 = 67.74 \text{ km}/(s \text{ Mpc})$, we obtain 13.8 Gyr for the Λ CDM model. But for models A, and B, we obtain, respectively, 12.5 Gyr, and, 13.0 Gyr, as the age of the universe without any further modifications. These are a precise match with what is being claimed in reference [1].

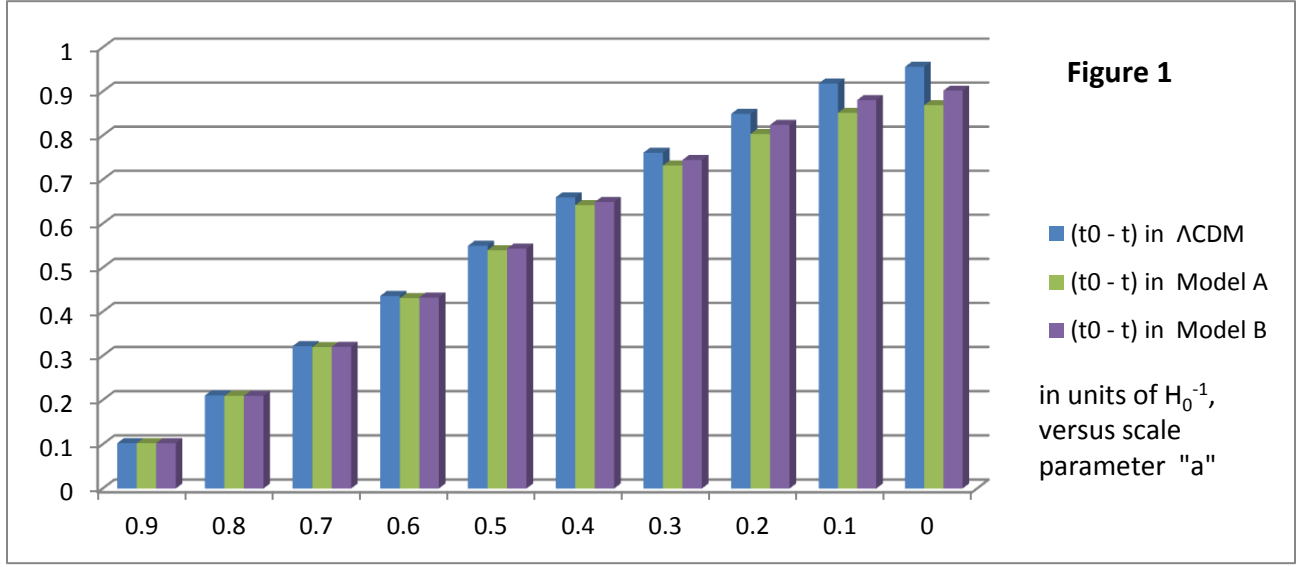


Figure 1, Age Correction Factors for Three Models, Λ CDM, model A, and model B. H_0 is Hubble's constant.

The two models, A and B, were introduced in order to explain the quintessence parameter, $w = -0.98$, versus $w = -1$, which holds in the Λ CDM model. We also sought to explain the cosmological constant fine tuning problem, the discrepancy between the present day very weak value of the cosmological constant, and the much greater vacuum energy found in earlier epochs. We assumed a connection exists, and that the cosmological constant is a characteristic of the vacuum. The present-day observed value is, $\Lambda_{OBS} = 1.11 * 10^{-52} m^{-2} = 4.33 * 10^{-66} (eV)^2$. At the very beginning of cosmic evolution, $\Lambda_{VACUUM} = (Planck\ Length)^{-2} = 3.83 * 10^{69} m^{-2} = 1.22 * 10^{28} (eV)^2$. This discrepancy in length squared, amounting to 121 orders of magnitude, between Λ_{VACUUM} and, Λ_{OBS} , has often been referred to as the "worst fine-tuning problem" in physics. To explain both the cosmological fine tuning problem, as well as the observationally determined quintessence parameter, $w = -0.98$, we assumed that the inverse gravitational constant, G^{-1} , is in reality, an order parameter varying very slowly at present with respect to cosmological time.

In order to derive, $w = -0.98$, we parametrized $G^{-1} = G^{-1}(T) = G^{-1}(a)$, by means of two separate functions, which we distinguished as model A, and model B. The cosmic scale parameter, "a" is related to CMB temperature, T, by $a = (2.725/T) = (1+z)^{-1}$, where z is the redshift. In model A, we set

$$G^{-1} = G_{\infty}^{-1} (1 - e^{-x}) \quad (1)$$

In equation, (1), "x" is defined as $x \equiv b/T = a b/T_0$ where "b" is a constant to be determined, having units of degrees Kelvin, $T_0 = 2.275 K$, and "a" is our scale parameter. In the present epoch, "a" = 1, and thus, $x_0 \equiv b/T_0$. In equation (1), G_{∞}^{-1} is the saturation value

of G^{-1} , applicable in the limit where the CMB temperature approaches zero, or equivalently, when “ a ” approaches infinity.

In model B , we have correspondingly,

$$\begin{aligned} G^{-1} &= G_{\infty}^{-1} L(x) \\ &= G_{\infty}^{-1} [\coth(x) - 1/x] \end{aligned} \quad (2)$$

In equation, (2), $L(x)$ is the Langevin function, defined by the equation $L(x) \equiv [\coth(x) - 1/x]$. As before $x \equiv b/T = a b/T_0$ where “ b ” is a constant to be determined, having units of degrees Kelvin, and, $x_0 \equiv b/T_0$. In equation (2), G_{∞}^{-1} is a different saturation value for G^{-1} , but defined in the same way. In the limit where T approaches zero, G^{-1} approaches G_{∞}^{-1} . Both models, A , and B , gave a current time variation of, $\dot{G}/G = -.06 H_0$, where H_0 is Hubble’s parameter. This variance in G value is within current observational bounds. To satisfy, $w = -.98$, we found that,

$$x_0 = 4.28, \quad b = 11.663 K \quad (\text{model } A) \quad (3)$$

$$x_0 = 17.67, \quad b = 48.15 K \quad (\text{model } B) \quad (4)$$

Thus, for any scale parameter, “ a ”, equations (1) and (2), can be utilized to find the corresponding $G^{-1} = G^{-1}(a)$ value at any cosmological epoch. A graph of both functions as a function of cosmic scale parameter is presented in Figure 2.

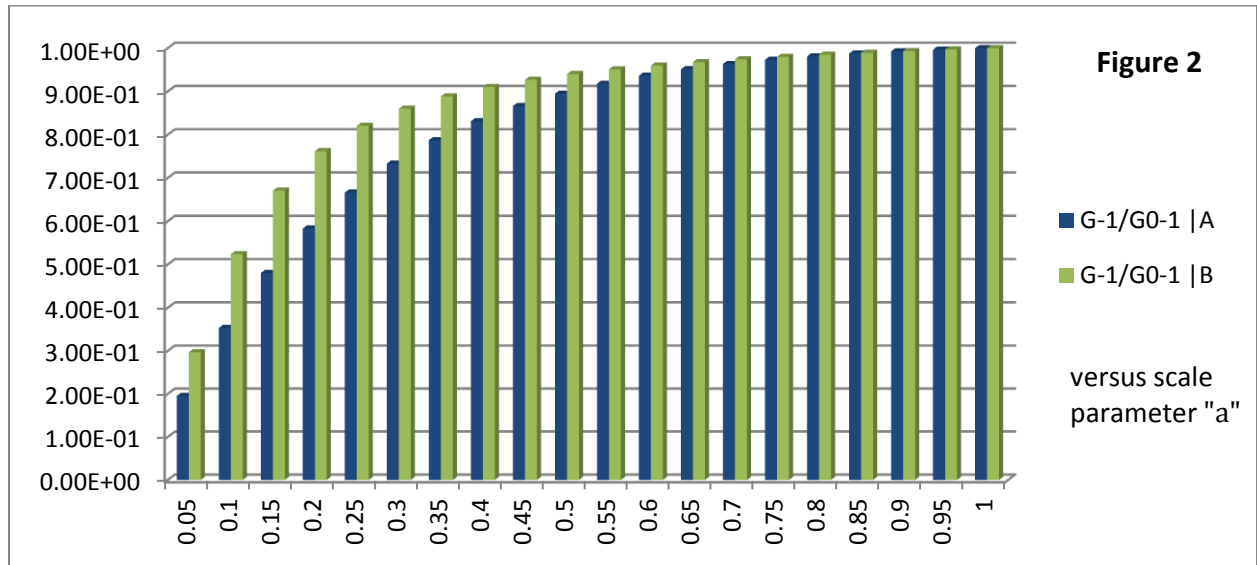


Figure 2, Order Parameters G^{-1}/G_0^{-1} plotted as a Function of Cosmic Scale Parameter, “ a ”, for models A , and B . G_0 is Newton’s constant in the current epoch.

Moreover, it was argued that G^{-1} surfaced at a temperature of

$$T_C = 6.20 * 10^{21} K \quad (\text{model } A) \quad (5)$$

$$T_C = 7.01 * 10^{21} K \quad (\text{model } B) \quad (6)$$

Beyond this temperature, gravity, as we currently know it, did not exist. Therefore gravity is considered to be an emergent “low energy” phenomenon. We also claimed that, if G is not fundamental, then there is nothing fundamental about the Planck scale. It is to be noted that even though models, A , and B , are underpinned by two different functions, the inception of gravity is roughly at the same temperature. We consider this to be more than a coincidence. The temperatures indicated by equations, (5), and, (6), are well below the Planck temperature of, $1.42 * 10^{32} K$, but well above the temperature of $10^{16} K \approx 1 TeV$, where all particles in the standard model are ultra-relativistic [6] [7].

Models, A , and B , lead to saturation values of

$$(G_\infty^{-1})|_A = 1.014 G_0^{-1} \quad (\text{model } A; \text{ large } "a" \geq 2) \quad (7)$$

$$(G_\infty^{-1})|_B = 1.054 G_0^{-1} \quad (\text{model } B; \text{ large } "a" \geq 10) \quad (8)$$

This means that, G_0 , the current value of Newton’s constant will decrease further, until

$$(G_\infty)|_A = .986 G_0 \quad (\text{model } A; \text{ large } "a" \geq 2) \quad (9)$$

$$(G_\infty)|_B = .949 G_0 \quad (\text{model } B; \text{ large } "a" \geq 10) \quad (10)$$

The details are presented in reference [4].

With these two time varying G models, we can make a case for the quintessence parameter, $w = -.98$. We can also show that the cosmological constant, Λ , scales. In fact,

$$G/G_0 = \rho_\Lambda / \rho_{\Lambda_0} = (\Lambda/\Lambda_0)^{1/2} \quad (11)$$

The subscript 0 refers to current epoch values, and ρ_Λ is the dark energy mass density. In the earliest times, G is proportional to temperature, T , in both models, A , and B . We can furthermore show that, at inception,

$$G/G_0 = 5.273 * 10^{20} \quad (\text{model } A) \quad (12)$$

$$G/G_0 = 4.113 * 10^{20} \quad (\text{model } B) \quad (13)$$

Both values are similar and quite large. We believe, nevertheless, that there could very well be a twenty order of magnitude increase in G at the extremely high temperatures, indicated by equations (5), and (6). We substitute equations, (12), and, (13), into relation, (11). This gives

$$\Lambda/\Lambda_0 = 2.78 * 10^{41} \quad (\text{model } A) \quad (14)$$

$$\Lambda/\Lambda_0 = 1.69 * 10^{41} \quad (\text{model } B) \quad (15)$$

We do not have the 121 order of magnitude difference between present and past values because *we are stopping well short of the Planck temperature*. Our inception temperature is of the order,

$\approx 7 * 10^{21} K$. See equations, (5), and, (6). We have instead a more modest 41 order of magnitude increase as indicated by equations, (14), and, (15).

With these models *A*, and *B*, it now appears, that in addition to deriving $w = -.98$, as well as explaining (alleviating) the cosmological constant problem, we have a possible explanation for the younger age of the universe. The figure above gives an age which falls in line with the newly observed values. In fact, we found in the original reference, [4], that we had to modify the Hubble value towards lower values in order to conform to the 13.8 billion year estimate. If we insist on 13.8 billion year look-back time, then for model, *A*, we should chose $H_{0A} = 61.7 \text{ km}/(s \text{ Mpc})$. For model *B*, the corresponding correction should be, $H_{0B} = 63.9 \text{ km}/(s \text{ Mpc})$. If, on the other hand, we stick to the $67.74 \text{ km}/(s \text{ Mpc})$ value, then we obtain the ages as indicated above in our figure /graph. This may provide the solution to the “tension” problem currently being discussed. We went into great detail in reference [4] to show that the time varying G models can reproduce the Λ CDM model in all its essentials. It is only in the very early universe ($a \leq .001$) that marked deviations occur between model, *A*, or *B*, versus the Λ CDM model. For most of cosmic evolution, our variable G models give results similar to the predictions of the Λ CDM model. In fact, in the limit where the quintessence parameter, w approaches -1 , the time-varying \dot{G}/G vanishes, and we are left with precisely the concordance model.

If G is indeed varying with respect to cosmological time, then G^{-1} must be replaced by a scalar field, as first suggested by Jordan [8]. In fact, we find that in this instance,

$$\langle 0|\phi^2|0\rangle = G^{-1} = M_G^2/(\hbar c) \quad (16)$$

Here M_G is the mass of the hypothetical massive particle representing gravity, which is changing with respect to cosmological time. We consider gravity, as exemplified by the coupling “constant”, G , to be a property of the vacuum. The expression, equation (16), can be compared to the magnetization in condensed matter physics, or the inverse Fermi constant, $G_F^{-1} \sim M_W^2$, in high energy physics. All have the same canonical mass dimension as, G^{-1} , defined above. We are close to G^{-1} having achieved its full saturation value, as can be seen upon inspection of equations, (7), and, (8), but we are not there yet. The mass is still evolving, albeit at a very slow rate in the present cosmological epoch. Our parametrizations indicate full saturation values at $a \approx 2$ and $a \approx 10$ for models, *A*, and *B*, respectively. In other words, full saturation is achieved when the universe will have doubled its present size for model, *A*. In model *B* for full saturation, the universe will have to increase its size by a factor of 10.

We close by discussing a modified Planck scale. As is well known, the Planck length, the Planck mass, the Planck time, etc. are all given in terms of Newton’s constant, and if Newton’s constant varies, then, there is nothing fundamental about the Planck scale. The saturated values for G , however, indicated by equations, (9), and (10), do not change. If there is anything comparable to Planck scale, then we should be using these values for a refined definition of Planck length, mass, time, etc. We therefore make the following adjustments,

$$L_{PP} = (\hbar G_\infty/c^3)^{\frac{1}{2}} = (\hbar G_0/c^3)^{\frac{1}{2}} (G_\infty/G_0)^{\frac{1}{2}} = s L_P = s 1.62 * 10^{-35} m \quad (17)$$

The scale factor, s , can be found using equations, (9), and (10). For model, A , we obtain $s_A = .993$, whereas for model B , the corresponding value is, $s_B = .974$. In equation, (17), $L_P = 1.62 * 10^{-35} m$, is the conventional Planck length, defined in terms of the present day value of Newton's constant, and L_{PP} is the adjusted value using a saturated value for Newton's constant. Similarly, one can show that,

$$M_{PP} = (\hbar c / G_\infty)^{\frac{1}{2}} = (\hbar c / G_0)^{\frac{1}{2}} (G_0 / G_\infty)^{\frac{1}{2}} = s^{-1} M_P = s^{-1} 2.18 * 10^{-8} kg \quad (18)$$

The quantity, $M_P = 2.18 * 10^{-8} kg$, is the conventional Planck mass, defined in terms of the present day value of Newton's constant, and M_{PP} is the adjusted value, using a saturated value for Newton's constant. For models, A , and B , the scale factor, s^{-1} equals, $s_A^{-1} = 1.007$, and, $s_B^{-1} = 1.027$, respectively. The other Planck quantities can be adjusted correspondingly. We notice that because these scale factors are close to one, there is not much difference between the adjusted Planck scale and the conventional Planck scale. Nevertheless there is a difference, if these models are to be taken seriously. An ultimate physical model/justification for the mathematical expressions, (1), and (2), remain to be explored and worked out.

REFERENCES:

- [1] Riess, A.G., Casertano, S., Yuan, W., Macri, L.M., Scolnic, D., *Large Magellanic Cloud Cepheid Standards Provide a 1% Foundation for the Determination of the Hubble Constant and Stronger Evidence for Physics Beyond Λ CDM*, Astrophysical Journal (ApJ) 861, 36 (2018)
[arXiv:1903.07603](https://arxiv.org/abs/1903.07603) [astro-ph.CO]
- [2] [Ananthaswamy, A., Best-Yet Measurements Deepen Cosmological Crisis](https://www.scientificamerican.com/article/best-yet-measurements-deepen-cosmological-crisis/), Scientific American, March 22, 2019 <https://www.scientificamerican.com/article/best-yet-measurements-deepen-cosmological-crisis/>
- [3] Powell, C.S., *The universe may be a billion years younger than we thought...*, <https://www.nbcnews.com/mach/science/universe-may-be-billion-years-younger-we-thought-scientists-are-ncna1005541> May 18, 2019 - The age of the *universe* may have been overestimated by more than a billion years, forcing scientists to rethink how we got from the Big Bang to ...
- [4] Pilot, C, 2018, *Is Quintessence an Indication of a Time-Varying Gravitational Constant?*, <https://arxiv.org/abs/1803.06431>, Journal of High Energy Physics, Gravitation and Cosmology (JHEPGC) JHEPGC Vol 5 No 1 (2019) 41-81
- [5] Collaboration, Planck, PAR Ade, N Aghanim, C Armitage-Caplan, M Arnaud, et al., *Planck 2015 results. XIII. Cosmological parameters*. arXiv preprint 1502.1589v2[1] (<https://arxiv.org/abs/1502.1589v2>), 6 Feb 2015
- [6] J.C. Mather et al., *Calibrator Design for the COBE Far-Infrared Absolute Spectrophotometer (FIRAS)* Astrophys. J. 512 Issue 2, 511-520 (1999)

[7] Lars Husdal, “*On Effective Degrees of Freedom in the Early Universe*”, *Galaxies* (2016), 4, x: doi: 10.3390/ arXiv: 1609.04979v3 [astro-ph.CO] 26 Jan 2017

[8] P. Jordan, *G Has to Be a Field*, *Naturwiss.* 25, 513 (1937)