

[tlnomiva] : Transmission Line Nominal Values without Tolerance - from Cable Specifications and Technical Data Sheets : FLOSS for MS Windows

N.I. Yannopoulou, P.E. Zimourtopoulos *

Antennas Research Group, Austria

Abstract

[[tlnomiva] is a visual software application developed by the authors for a transmission line characterization from the user's point of view. The numerical computations are based on the precise formulation within the distributed circuit coefficients model of a transmission line, which was theoretically developed by the authors and published in a previous paper. The use of [tlnomiva] is fully demonstrated by an example for the popular RG 214 coaxial cable. This application is Free Libre Open Source Software and provides an option for more detailed figures by calling the executable of the freely distributed source [wgnuplot].

Keywords

transmission line, nominal value, propagation characteristics, circuit coefficients, floss

Introduction

A lot has been published for transmission lines in general, as well as, specifically for their use at high frequencies. The software application [tlnomiva], that is under development and illustrated here, is an intermediate step in the authors' recent effort to clarify a number of obscure or confusing points on this subject. It is intended to reveal the limits in the coexistence of precise

formulas of transmission line theory with the available nominal values, usually without tolerance, which are given as cable specifications by established authorities or as data sheets from manufacturers.

The main formulas of [tlnomiva] were presented in [1], while the basic theory is cited in [2], thus only a small part of them is repeated here and just for the sake of completeness. The

cut-off frequency has not been taken into account. The data for the presented examples are publicly available through internet.

[tlnomiva] is provided both as Free Libre Open Source Software and ready to install and use executable. It is developed in MS Visual Basic 6 in MS Windows XP 32 and in order to support a more sophisticated way of plotting data and functions it optionally uses the [wgnuplot] software, version 5.0 patchlevel 3 [3]. It is tested for compatibility with various MS Windows operating systems, up to W10-64.

To the best of the authors' knowledge, there is no available FLOSS for transmission lines, especially with a precise formulation one.

[tlnomiva]

Fig. 1 shows the main window of [tlnomiva] with the window of [About] open, while Fig. 2 contains all the menu items along with their sub-menu options numbered from 1 to 6. The application features can be divided according to their functionality in three groups:

(1) R, L, G, C intervals computation from the nominal values of: the attenuation factor α or accurately A in [dB/100m], the velocity fac-

tor v_f and the characteristic impedance Z_0 and plotting with respect to frequency f [MHz], using working formulas from [1], [2],

(2) a new estimation of A, v_f and Z_0 using the numerical results from the previous window for the R, L, G, C, intervals either directly or reading them from a previously saved file and plotting them and

(3) α , β , R_0 , X_0 computation as functions of frequency considering R, L, G, C constant in a range of frequency and plotting them.

In these three groups the plot of all the involved quantities with respect to frequency is possible. Except of R, L, G, C distributed circuit coefficients and α , β , R_0 , X_0 propagation characteristics there are included: the A attenuation factor, the v_f velocity factor, the E, and H terms, the $\alpha\beta$ angles as the upper and lower limit of the Z_0 phase angle and finally the ωL , ωC and f/v_f . The used units are remain to all forms the same: R [m Ω /m], L [nH/m], G [μ S/m], C [pF/m], f [MHz], α [Np/m], A [dB/100m], β [rad/m], R_0 , X_0 , Z_0 [Ω], $\alpha\beta$ [deg], ωL [m Ω /m], ωC [μ S/m], f/v_f [MHz]. The [feet] option is disabled.

[tlnomiva] : TRANSMISSION LINE NOMINAL VALUES WITHOUT TOLERANCE...

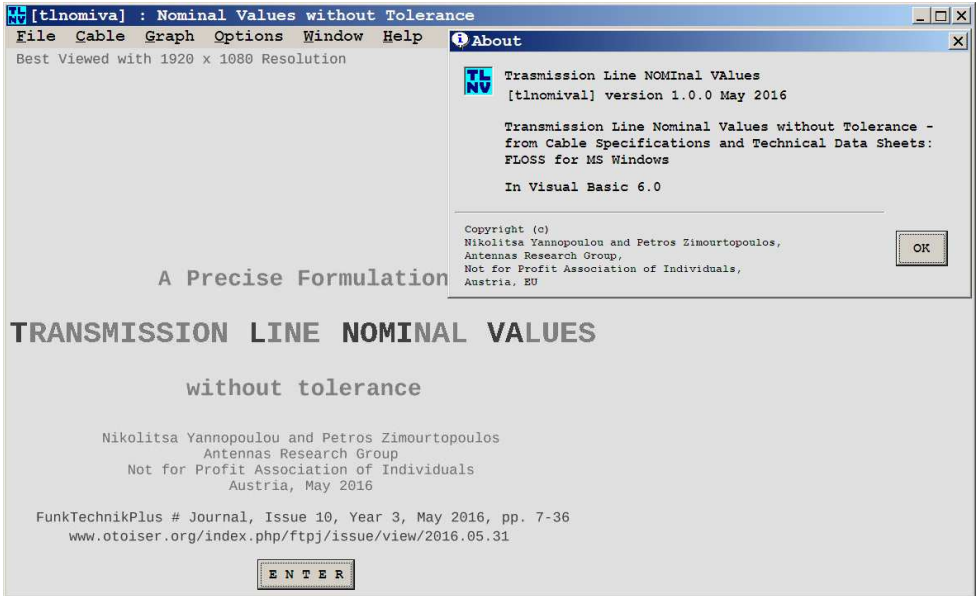


Fig. 1: [tlnomiva] : The main window

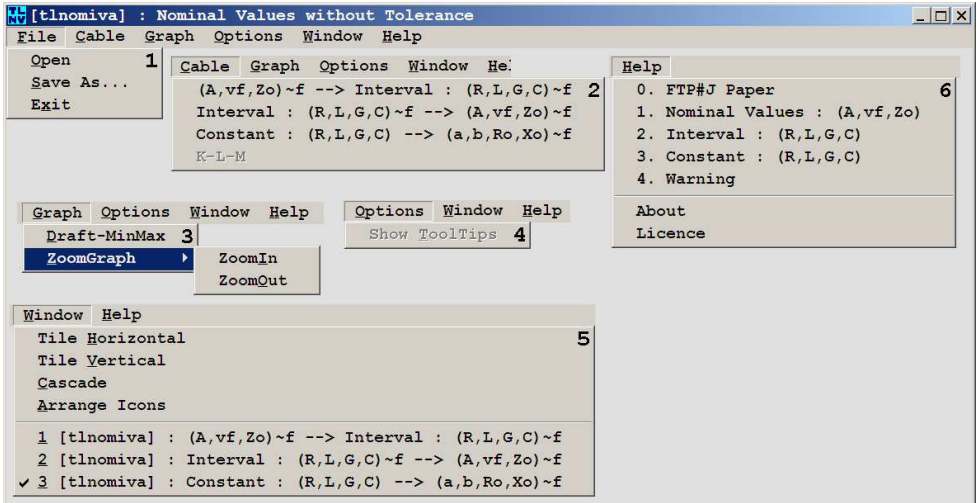


Fig. 2: Main window: The unfolded menu items

Working Formulas

The basic expressions between the nominal values of A , νf and Z_0 and the R , L , G , C distributed circuit coefficients of a line are given in [1] and repeated here as:

$$R = \alpha R_0 - \beta X_0 \quad (1)$$

$$L = (\alpha X_0 + \beta R_0) / \omega \quad (2)$$

$$G = (\alpha R_0 + \beta X_0) / Z_0^2 \quad (3)$$

$$C = (-\alpha X_0 + \beta R_0) / (\omega Z_0^2) \quad (4)$$

It is obvious that if the nominal value of Z_0 is substituted with R_0 , then X_0 will be zero and the above expressions will be actually independent of frequency, a case that will be examined last. Thus, we have to consider Z_0 , as it is usually given in data sheets of cables, as the amplitude of \dot{Z}_0 . Then by using the standard relation

$$Z_0^2 = R_0^2 + X_0^2 \quad (5)$$

where

$$R_0 = Z_0 \cos(z_0) \quad (6)$$

$$X_0 = \pm Z_0 |\sin(z_0)| \quad (7)$$

the above (1)-(4) become functions of the z_0 phase angle.

Since:

i. the interval of z_0 is the open interval $(\pi/4, \pi/4)$,

ii. the four quantities R , L , G , C do not have an extreme inside this interval. This results from the fact that the phase angle of \dot{Z}_0 , which is the angle $(z - y)/2$, and of \dot{y} , which is the angle $(z + y)/2$ [1], can not be equal inside this interval but only for the case of $y = 0$ which is impossible since $y \neq 0$ always,

we have to look for the two extreme values only at the ends of the open interval. Furthermore, since the four functions (1)-(4) are continuous with respect to z_0 in the above closed interval, the mentioned extremes will be the values of the continuous extension of these functions at the closed interval, at its ends. Three separated cases are distinguished:

$$\alpha < \beta : -\alpha/\beta < X_0/R_0 < \alpha/\beta \quad (8)$$

$$\beta < \alpha : -\beta/\alpha < X_0/R_0 < \beta/\alpha \quad (9)$$

$$\alpha = \beta : -1 < X_0/R_0 < 1 \quad (10)$$

Tab. 1 contains the two extreme values for the four coefficients and for the H term if we consider that

$$H = \omega L G - \omega C R \quad (11)$$

Tab. 1: RLGC and H Open Intervals

	$\alpha < \beta$	$\alpha > \beta$	$\alpha = \beta$
R	$(0, \frac{2\alpha\beta}{Y} Z_0)$	$(\frac{\alpha^2 - \beta^2}{Y} Z_0, Y Z_0)$	$(0, Y Z_0)$
L	$(\frac{\beta^2 - \alpha^2}{\omega Y} Z_0, \frac{1}{\omega} Y Z_0)$	$(0, \frac{2\alpha\beta}{\omega Y} Z_0)$	$(0, \frac{1}{\omega} Y Z_0)$
G	$(0, \frac{2\alpha\beta}{Y Z_0})$	$(\frac{\alpha^2 - \beta^2}{Y Z_0}, \frac{Y}{Z_0})$	$(0, \frac{Y}{Z_0})$
C	$(\frac{\beta^2 - \alpha^2}{\omega Y Z_0}, \frac{Y}{\omega Z_0})$	$(0, \frac{2\alpha\beta}{\omega Y Z_0})$	$(0, \frac{Y}{\omega Z_0})$
H	$(-2\alpha\beta, +2\alpha\beta)$	$(-2\alpha\beta, +2\alpha\beta)$	$(-Y^2, +Y^2)$

The reverse relations of α , β , R_0 and X_0 from the RL GC values are also presented in [1] and repeated here as

$$\alpha = \frac{\sqrt{ZY + RG - X_L X_C}}{\sqrt{2}} \quad (12)$$

$$\beta = \frac{\sqrt{ZY - RG + X_L X_C}}{\sqrt{2}} \quad (13)$$

$$R_0 = \frac{\sqrt{ZY + RG + X_L X_C}}{\sqrt{2} Y} \quad (14)$$

$$X_0 = \text{sgn}(LG - RC) \frac{\sqrt{ZY - RG - X_L X_C}}{\sqrt{2} Y} \quad (15)$$

where $X_L = \omega L$ and $X_C = \omega C$, or directly for Z_0 from its definition as

$$Z_0 = \sqrt{\frac{Z}{Y}} = \sqrt{\frac{R^2 + X_L^2}{G^2 + X_C^2}} \quad (16)$$

RLGC Intervals from A, vf, Z_0 Nominal Values

The most usual case of available cable data concerns the attenuation factor per some length of cable, i.e. 100 [m] or 1000 [ft], denoted here as A, the velocity factor vf as a number between 0 and 1, and the characteristic impedance Z_0 [Ω], or more accurately its amplitude Z_0 , of the cable. Fig. 3 shows the first window of [tlnomiva] where it is possible from these data to calculate an interval for R_0 , X_0 , and R,

L, G, C coefficients in a [Single] frequency. The user must first type the frequency in [MHz] and then the three data A, vf, Z_0 . The application will evaluate all the other quantities through (1)-(11), and display them at the corresponding text boxes using the indicated units. The letter m stands for the minimum and the letter M for maximum for all the quantities.

The $m\alpha\beta$ [°] is significant since it results the boundary angle inside which Z_0 will be. This angle is defined by both $-m\alpha\beta$ and $+m\alpha\beta$ and depends on the relation between α and β as it is described in (8)-(10) above. Fig. 4 shows the three cases with the grayed horizontal and verti-

cal thick lines to represent the values range of R_0 , X_0 .

When the option [Multiple] is selected a grid opens where the values for each frequency will be written and two more buttons appear at the right part of the window: [Add Values to Grid] and [Estimation]. The user must give the first and last frequency. Then type each frequency at the text box above and the corresponding A, vf, Z_0 as in [Single] option. By pressing the [Add Values to Grid] button all the calculated values are transferred to a grid line, as it is shown in Fig. 5. In any time it is possible to select from the [File] menu the [Save As] item and save these data to a text file for later use.

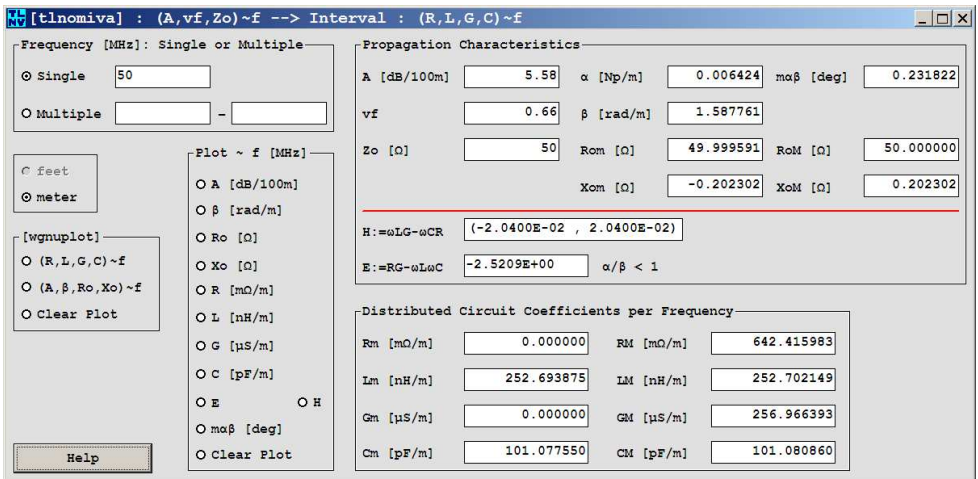


Fig. 3: [(A,vf,Z₀)~f --> Interval : (R,L,G,C)] - [Single]

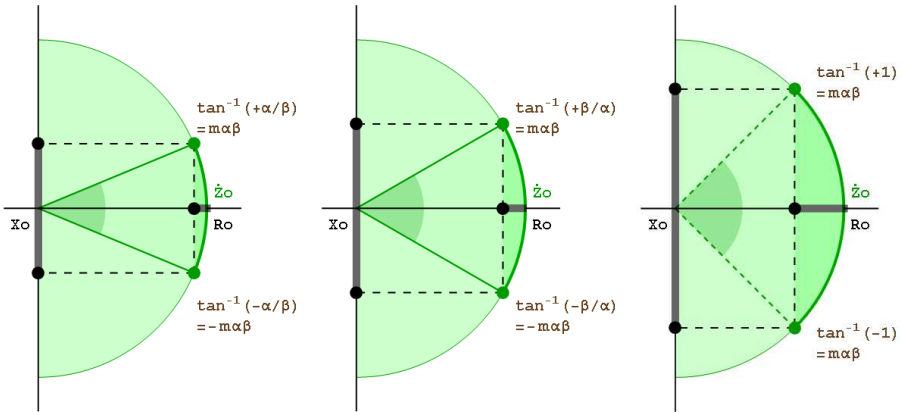


Fig. 4: $\pm m\alpha\beta$ angle: Intervals for R_0 , X_0

The [Multiple] option enables simultaneously all the buttons in frames [Plot ~ f [Mhz]] and [wgnuplot], but if there is no data available a message will appear to the screen to guide the user. It is possible to enter as many frequency data as it is desired but not for frequencies below or above the first and last frequency respectively.

The user may either plot all the quantities versus f [MHZ], directly in the application, as for example is illustrated in Fig. 6 where A [dB/100m] is selected or to use [wgnuplot] and take one of the two possible quadruples as shown in Figs. 7 and 8. Only the points are plotted in wgnuplot application while inside [tlnomiva] it is possible to plot either points with lines, the default state, or only points

if the user uncheck the box [Show Lines] at the right of the picture. The lines used here between points are only straight segments of lines.

The chart inside [tlnomiva] is movable with the left mouse button. Two very useful features have been added under the [Graph] menu: [Draft-MinMax] and [Zoom-Graph] with two items [Zoom In] and [ZoomOut] as it is shown in Fig. 2 (3). The first produces a plot exactly with min and max values for both vertical and horizontal axis, and with the second a much bigger chart appears for the plot, centered at the screen. The access to both features is also possible through their shortcut keys Alt+G+D and Alt+G+ Z+I or Alt+G+Z+O and in addition through the (+) and (-) from the keyboard's numerical pad.

Fig. 9 shows an example for the L coefficient, where it is obvious that the points of different color and shape for its interval ends reveals the existing too small difference between them.

The user may not enter one by one the frequencies and the corresponding nominal values of A, v_f and Z_0 but just to read them from an already existing text file using the [File][Open] menu item. An example of such a file is given in Fig. 10, where the first line is a text line. The second contains the number of frequencies (10 in this example) and the common characteristics of the cable

as 0.66 for v_f , 50. for Z_0 , separated by spaces. Then a list of f in MHz and A in dB/100m couples follows. The grid will be filled in automatically after reading the file. The width of the grid columns is adjustable to ensure the visibility of all the produced values.

Another way is to open an already existing file with previously saved data from this application, as in Fig. 11. Then, again the grid contains the read values while all the text boxes for all the quantities are remain blank except the v_f , Z_0 , and the first and last frequency as it shown in Fig. 6.

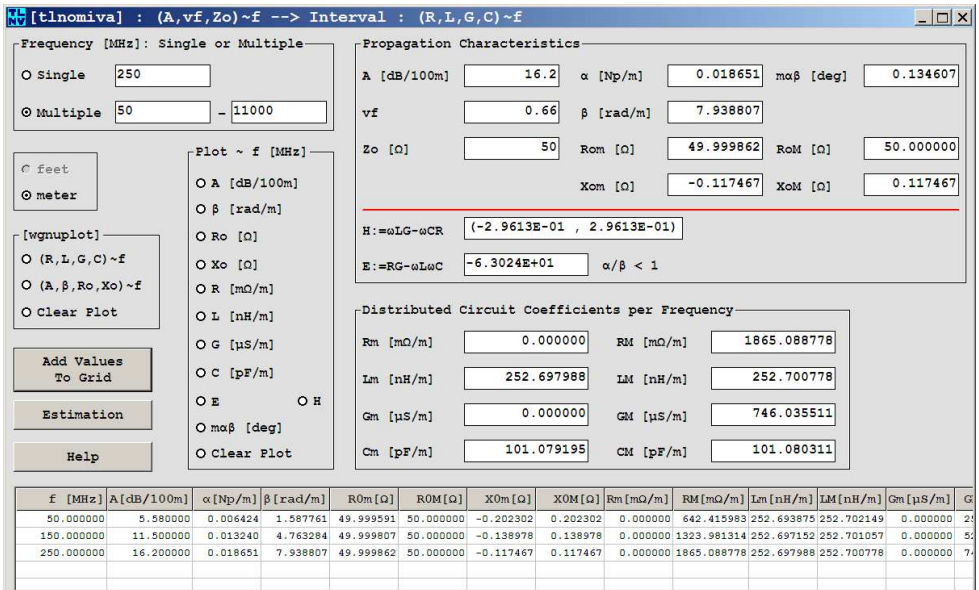


Fig. 5: [(A, v_f , Z_0)~f --> Interval : (R, L, G, C)~f] - [Multiple]

[tlnomiva] : TRANSMISSION LINE NOMINAL VALUES WITHOUT TOLERANCE...

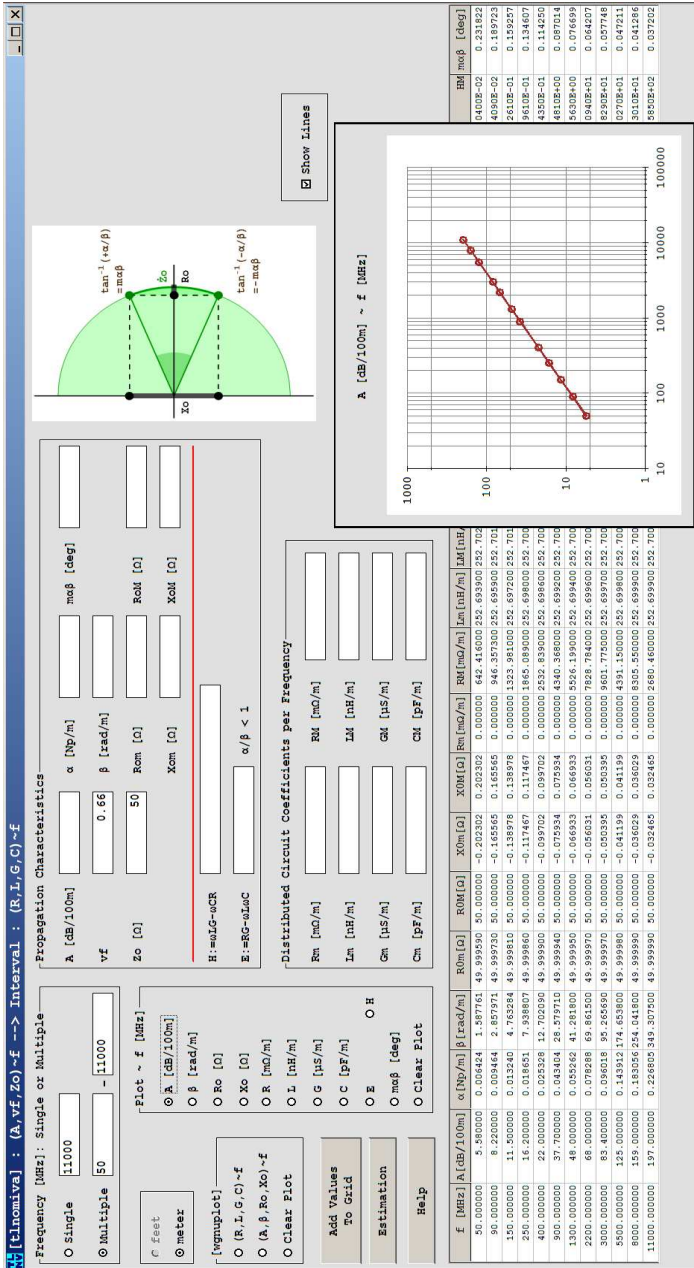


Fig. 6: [(A, vf, Z₀)~f --> Interval : (R, L, G, C)~f] - Plot

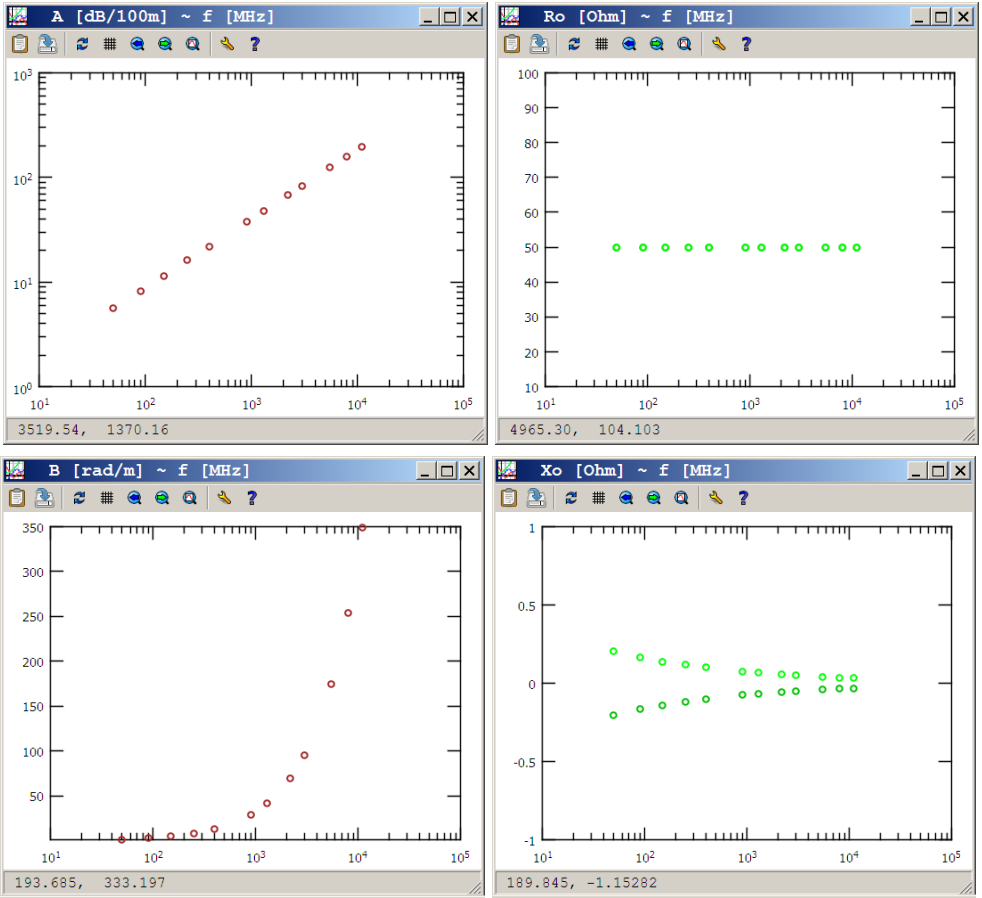


Fig. 7: A , β , R_0 , X_0 versus frequency from [wgnuplot]

```

RG214-NominalValues.txt - Notepad
File Edit Format View Help
CableData: #f[MHz], vf, Z0: 1st line ad f[MHz], A[dB/100m]: list
12 0.66 50.
50 5.58
90 8.22
150 11.50
250 16.20
400 22.00
900 37.70
1300 48.00
2200 68.00
3000 83.40
5500 125.00
8000 159.00
11000 197.00
    
```

Fig. 10: Nominal data values in a text file

[tlnomiva] : TRANSMISSION LINE NOMINAL VALUES WITHOUT TOLERANCE...

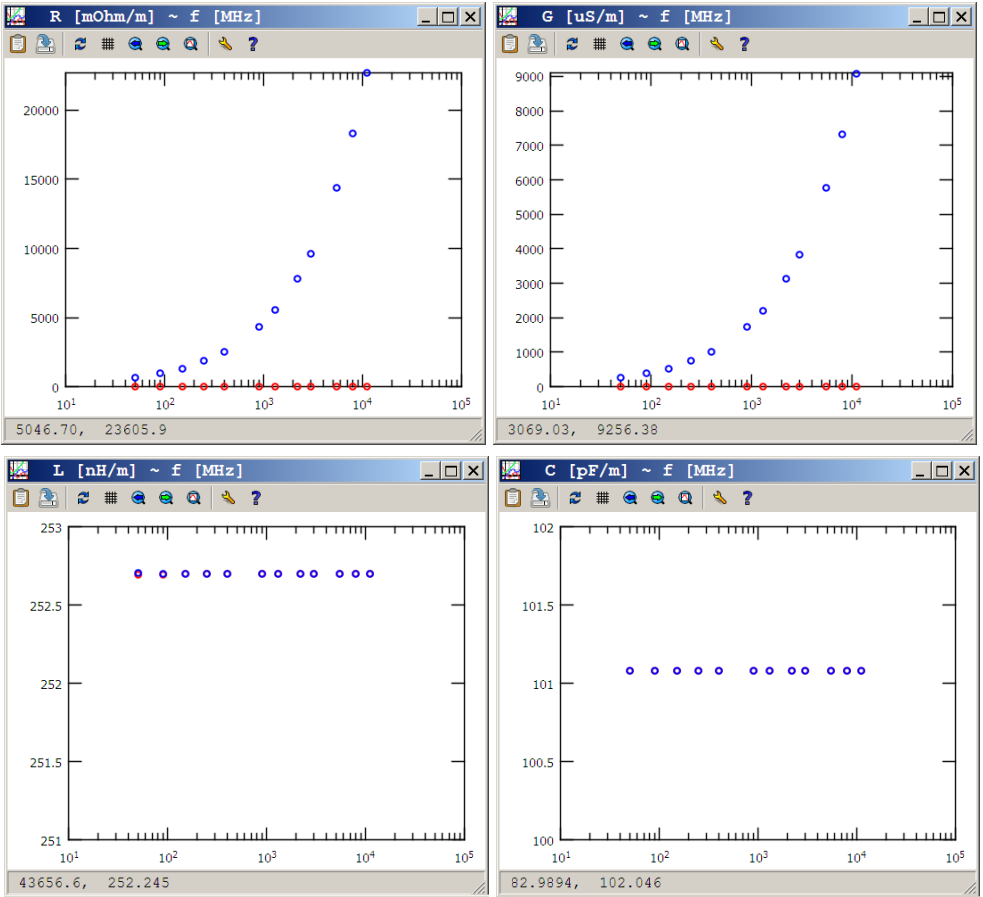


Fig. 8: R, L, G, C, coefficients versus frequency from [wgnuplot]

RG214-RIGG-Intervals.txt - Notepad

File	Edit	Format	View	Help
12	Z0	0.66	50	
50	5.59	0.096424	1.507761	49.99959 50 -0.202302 0.202302 0 642.416 252.6939 252.7021 0 256.9664 101.0776 101.0009 -2.5209 -0.02940 0.02940 0.231922
90	8.22	0.009464	2.857971	49.99973 50 -0.165565 0.165565 0 946.357 252.6959 252.7015 0 378.5429 101.0784 101.0086 -8.1679 -0.05409 0.05409 0.189723
150	11.50	0.013240	4.763284	49.99981 50 -0.138978 0.138978 0 1323.981 252.6972 252.7010 0 529.5925 101.0789 101.0084 -22.609 -0.12610 0.12610 0.159257
250	16.20	0.018651	7.938807	49.99986 50 -0.117467 0.117467 0 1865.089 252.6980 252.7008 0 746.0355 101.0792 101.0083 -63.024 -0.29610 0.29610 0.134607
400	22.00	0.025328	12.70209	49.99990 50 -0.099702 0.099702 0 2532.039 252.6986 252.7006 0 1013.135 101.0794 101.0082 -161.34 -0.64350 0.64350 0.114200
900	37.70	0.043404	20.57971	49.99994 50 -0.075934 0.075934 0 4340.369 252.6992 252.7004 0 1735.147 101.0797 101.0081 -315.00 -2.40100 2.40100 0.087014
1300	48.00	0.055262	41.28180	49.99995 50 -0.066933 0.066933 0 5526.199 252.6994 252.7003 0 2210.480 101.0798 101.0081 -1794.2 -4.56300 4.56300 0.076599
2200	60.00	0.070280	69.86150	49.99997 50 -0.056031 0.056031 0 7028.704 252.6996 252.7002 0 3131.514 101.0798 101.0081 -4800.6 -10.9400 10.9400 0.064207
3000	83.40	0.096018	95.26569	49.99997 50 -0.050395 0.050395 0 9081.775 252.6997 252.7002 0 3840.719 101.0799 101.0081 -9075.5 -18.2900 18.2900 0.057748
5000	125.00	0.143912	174.0530	49.99998 50 -0.041199 0.041199 0 14391.15 252.6996 252.7002 0 5756.461 101.0799 101.0081 -30504 -50.2700 50.2700 0.047211
8000	150.00	0.183056	254.0418	49.99999 50 -0.036029 0.036029 0 18305.55 252.6999 252.7001 0 7322.219 101.0800 101.0081 -64537 -93.0100 93.0100 0.041206
11900	197.00	0.226805	349.3075	49.99999 50 -0.032465 0.032465 0 22680.46 252.6999 252.7001 0 9072.104 101.0800 101.0081 -122920 -158.500 158.500 0.037202

Fig. 11: Previously saved Data in a text file

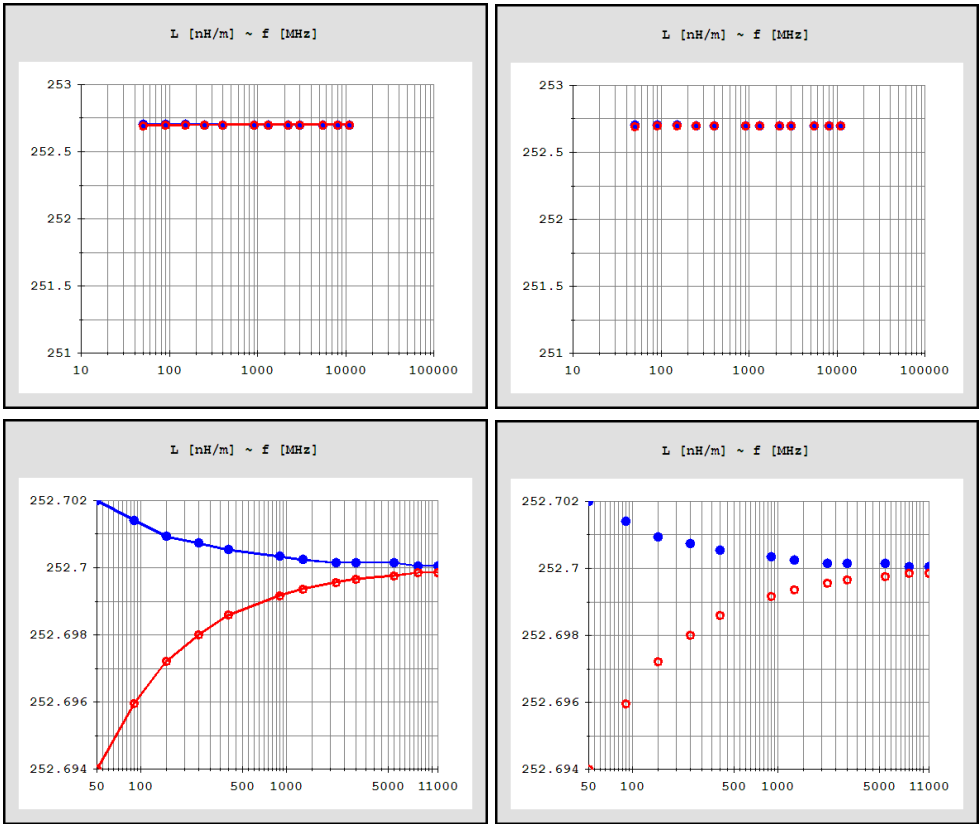


Fig. 9: L with-without lines and [Draft-MinMax]

The first line of this file contains four (4) numbers: two (2) integers, the number of lines and columns, and two (2) reals, νf and Z_0 . The following lines are exactly the same as the grid lines of the window.

Fig. 12 shows R_0 , X_0 , $m\alpha\beta$ and H with the [Draft-MinMax] enabled. The difference of R_0 from 50 [Ω] is small enough and the values of $m\alpha\beta$ permit

a small imaginary part X_0 , since they are less than a quarter of 1° in both sides of the horizontal line of real Z_0 . It is also evident that for lower frequencies the H intervals are, initially, closer to zero (0) which means closer to the Heaviside condition while more data are needed to characterize the line as capacitive or inductive.

This window generates eight (8) files in the directory of

[tlnomiva] : TRANSMISSION LINE NOMINAL VALUES WITHOUT TOLERANCE...

[tlnomiva] which are used from the [wgnuplot.exe], with specific filenames of obvious meaning:

R-points	L-points
G-points	C-points
A-points	B-points
Ro-points	Xo-points

Finally, the [Clear Plot] button in the [wgnuplot] frame just closes all occurrences

of the wgnuplot application [4] while the same button in the [Plot ~ f [MHz]] frame clears the displayed plot, leaving the chart empty. A short help is available by pressing the [Help] button. The [Estimation] button opens the next window of [tlnomiva] that uses the intervals of RL GC circuit coefficients for a new estimation of A, vf, Z₀.

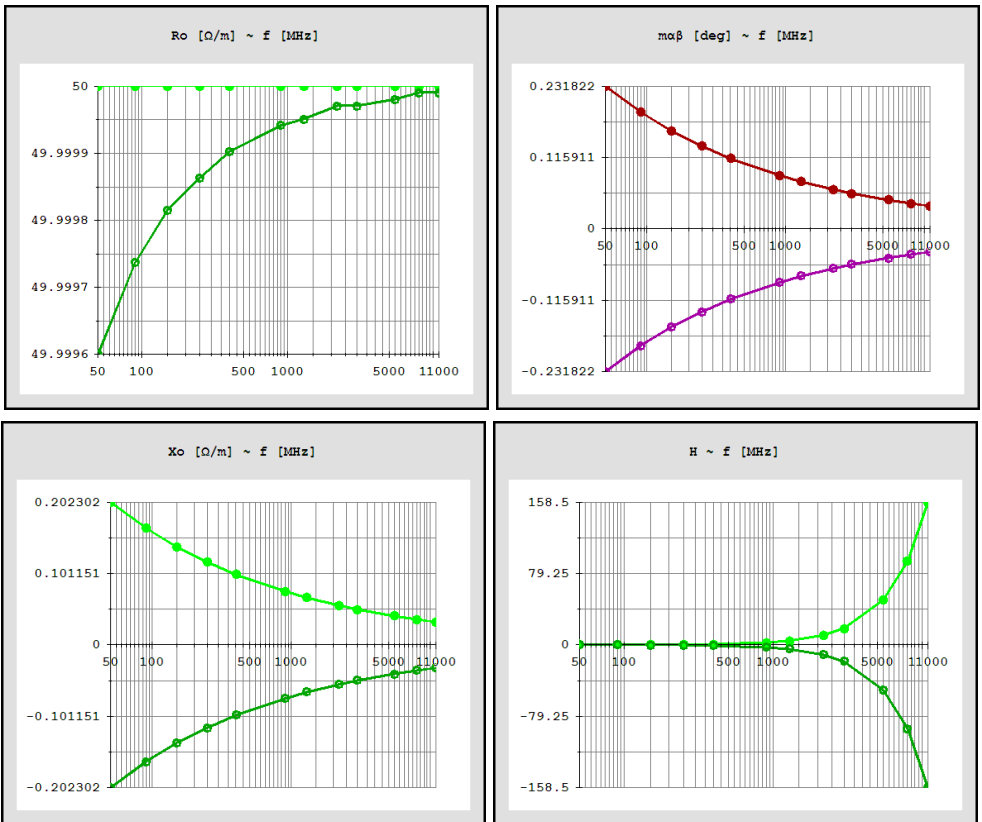


Fig. 12: R_0 , X_0 , $\mu\alpha\beta$ and H with [Draft-MinMax]

A, v_f , Z_0 estimation from RLGC Intervals

Relations (12)-(16) are actually result directly from the definition of Z_0 and \dot{y} . The problem is that R, L, G and C are not easily determined. They are closely related to the geometrical characteristics of the line and as distributed quantities not measured directly. Here, an attempt is presented to determine some values for A, v_f , Z_0 and thereafter for α , β , H, E, $m\alpha\beta$ using the RLGC intervals from the previous widow of [tlnomiva]. Additionally, the ωL , ωC and f/v_f are also given.

In particular three values are evaluated: the one that corresponds to the lower end of the RLGC intervals, the mean value and the one from the upper end of the intervals. The nominal values are given, respectively, where they are available. The main purpose of this effort is to estimate A, v_f , and Z_0 and to achieve a closer approach of RLGC by means of the known nominal values.

Fig 13 shows the second window of [tlnomiva], when it is opened from the [Cable] [Interval : (R,L,G,C)~f-->(A, v,f,Z₀)~f] menu. The table contains the values at the frequency selected from the drop down list box, 400 [MHz]

here. Initially, the table has no values and the message of Fig. 14 is at the top of the window. After pressing the [Load Data] the well known in windows users [Open] dialog box appears to select a file to read. The first line in Fig. 13 shows the path of this data file. If the window is accessed through the [Estimation] button of the previous window [(A, v_f , Z_0)~f-->Interval : (R, L,G,C)~f] then there is no message at the top and the table is filled automatically with the values corresponding to the first frequency.

The first four (4) lines of the table shows the values of RLGC as described above. The next eight (8) lines in the red frame contain the new estimated values. Their corresponding nominal values are shown at the right. To plot one of these quantities versus frequency, its option button under the label [Plot] must be selected. The colored little squares beside its data column (Red for minimum, Green for mean value, Blue for maximum) and the Black larger square above the nominal values correspond to the used color for the plot and they are buttons. Their default state is on. Pressing one of them or all, changes the state to off and the corresponding data are removed

[tlnomiva] : TRANSMISSION LINE NOMINAL VALUES WITHOUT TOLERANCE...

from the plot for each line.

1300 [MHz] in this example. Since all the colored buttons are on, all the values are plotted. The menu item [Draft -MinMax] is active for a closer view of the plot as described in the previous section and it is selected here.

Fig. 15 shows the full window with the plot of A [dB/100m] in the chart. The light blue open circles in the plot indicate the current frequency which is selected from the drop down list box,

Interval : (R,L,G,C)~f --> (A,vf,Zo)~f

C:\Lines\RG214-RLGC-Intervals.txt Load Data

Unit	Frequency [MHz]	min	Max	Plot
R [mΩ/m]	400	0.000000	2532.839000	<input type="checkbox"/>
L [nH/m]	400	252.698600	252.700600	<input type="checkbox"/>
G [μS/m]	400	0.000000	1013.135000	<input type="checkbox"/>
C [pF/m]	400	101.079400	101.080200	<input type="checkbox"/>

Show Lines

Nominal Values

A [dB/100m]	0.000000	21.999954	43.999908	<input type="checkbox"/>	22.000000
vf	0.659999	0.660001	0.660004	<input type="checkbox"/>	0.660000
Z0 [Ω]	50.000009	50.000010	50.000011	<input type="checkbox"/>	50.000000
H: Capac.	0.0000E+00	-7.2869E-08	-1.3117E-07	<input type="checkbox"/>	±6.4350E-01
E: α/β < 1	-1.6134E+02	-1.6134E+02	-1.6134E+02	<input type="checkbox"/>	-1.6134E+02
α [Np/m]	0.000000	0.025328	0.050657	<input type="checkbox"/>	0.025328
β [rad/m]	12.702014	12.702065	12.702115	<input type="checkbox"/>	12.702090
μαβ [deg]	0.000000	0.114250	0.228498	<input type="checkbox"/>	±0.114250

ωL [mΩ/m]	635100.835024	635103.366092	635105.897161	<input type="checkbox"/>	
ωC [μS/m]	254040.238136	254041.244811	254042.251486	<input type="checkbox"/>	
f/vf [MHz]	606.056924	606.059333	606.061741	<input type="checkbox"/>	606.060606

Fig. 13: [Interval : (R,L,G,C,)~f --> (A,vf,Z₀)~f] - Table

Read File as saved from
 [Cable] [(A,vf,Zo)~f --> Interval : (R,L,G,C)~f] : Load Data

Fig. 14: Initial message: Load Data

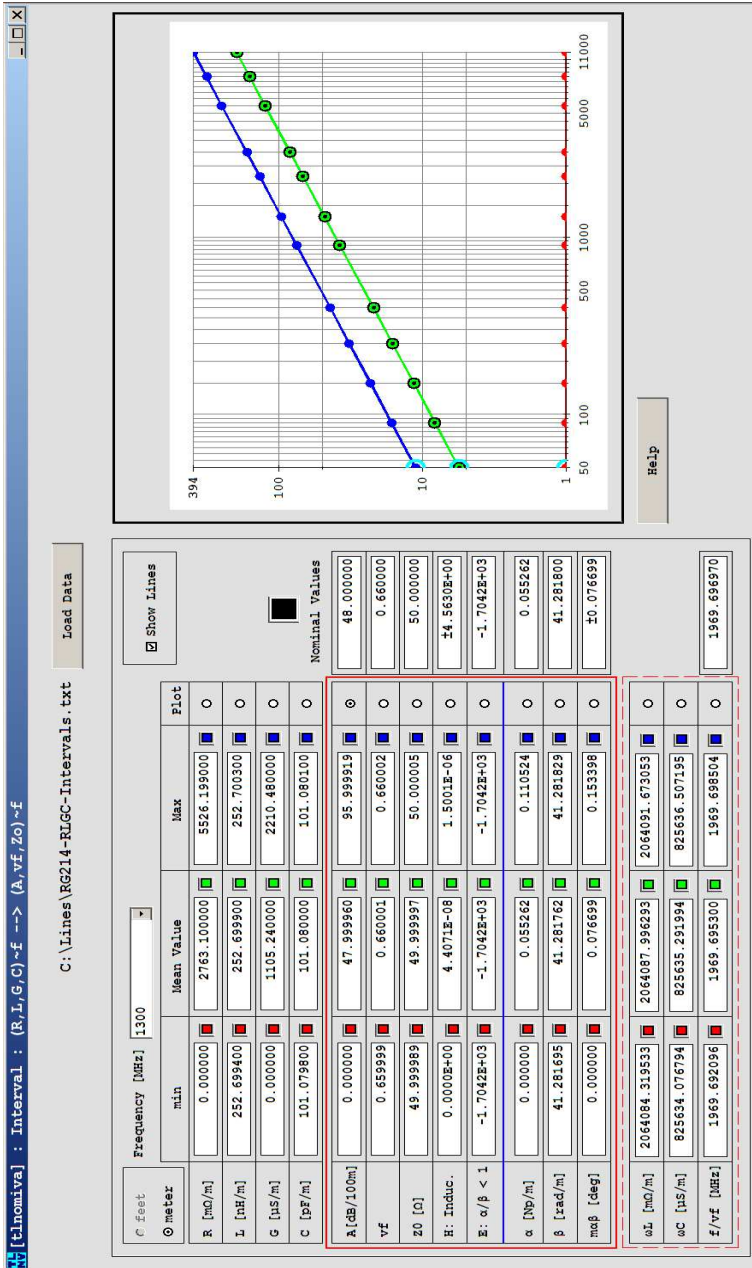


Fig. 15: [Interval : (R,L,G,C,)~f --> (A,vf,Z₀)~f] - Plot

[tlnomiva] : TRANSMISSION LINE NOMINAL VALUES WITHOUT TOLERANCE...

The minimum value results from (12) to be zero since the lower limits for R and G are equal to zero and the same is true for $m\alpha\beta$ and H, for this cable. It is obvious that the nominal value of A is achieved for the mean value as shown in Fig. 16 where the green and black colored points are plotted. The light blue point corresponds to the values shown above the chart. Velocity factor is illustrated in Fig. 17 and in Fig. 18 $m\alpha\beta$ is given. Both of them are shown with [Draft-MinMax] enabled. For $m\alpha\beta$ only the positive number is written at the table, while at the plot both

plus and minus $m\alpha\beta$ is shown. Fig. 19 contains Z_0 in both scales, where it is obvious that the difference from nominal value can not be denoted and Fig. 20 shows the H term, almost zero, similarly. If it is positive/ negative in both mean and maximum value then a Capacitive/Inductive label is added. For completeness Figs. 21-22 shows α and β respectively.

The [feet] option is again disabled, the [Show Lines] acts the same as in the previous window, while the [Zoom Graph] item with its sub-items is disabled in the current [tlnomiva] version.

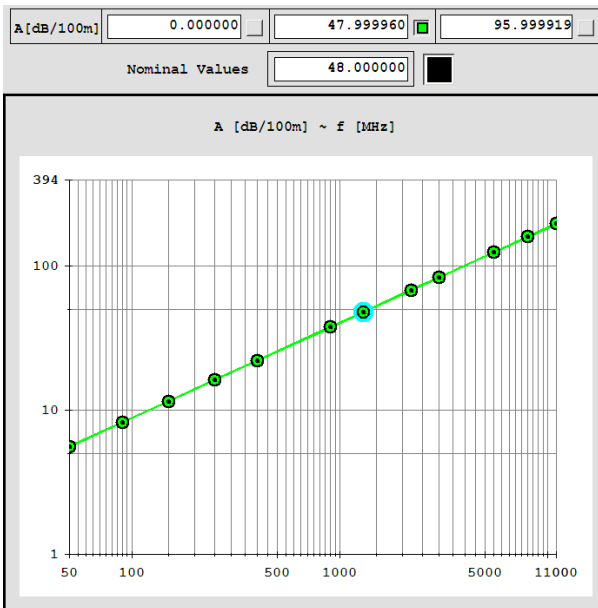


Fig. 16: Attenuation factor estimation and nominal value

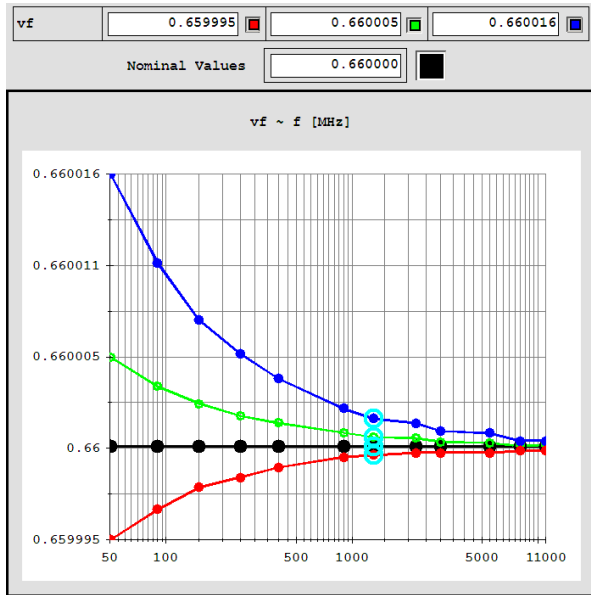


Fig. 17: Velocity factor estimation and nominal value

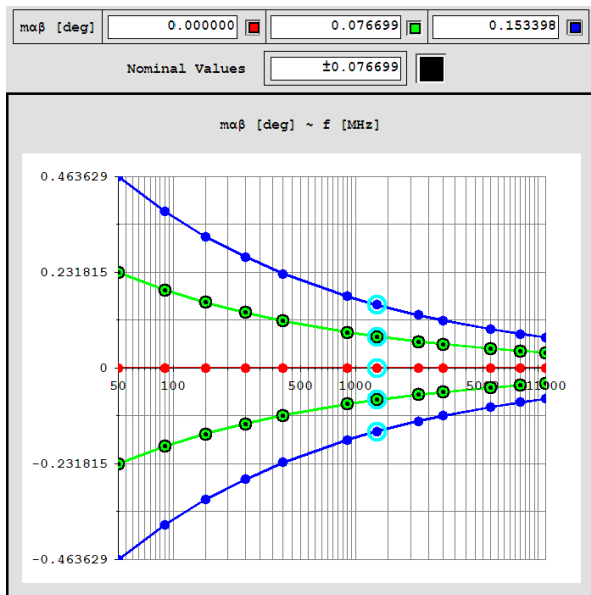


Fig. 18: $\alpha\beta$ estimation and nominal values

[tlnomiva] : TRANSMISSION LINE NOMINAL VALUES WITHOUT TOLERANCE...

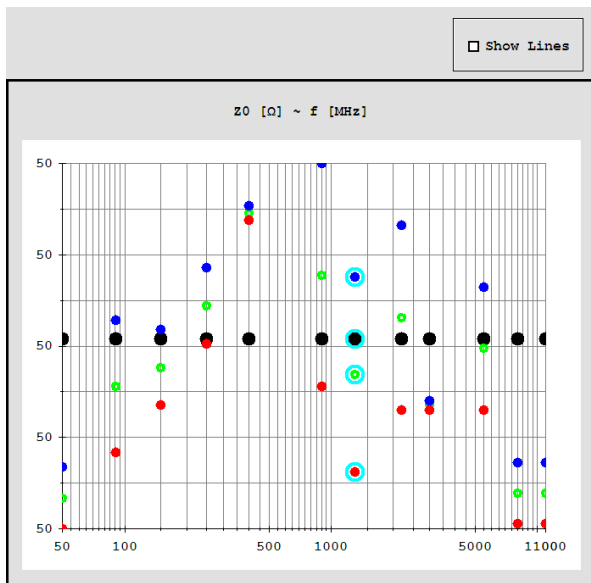
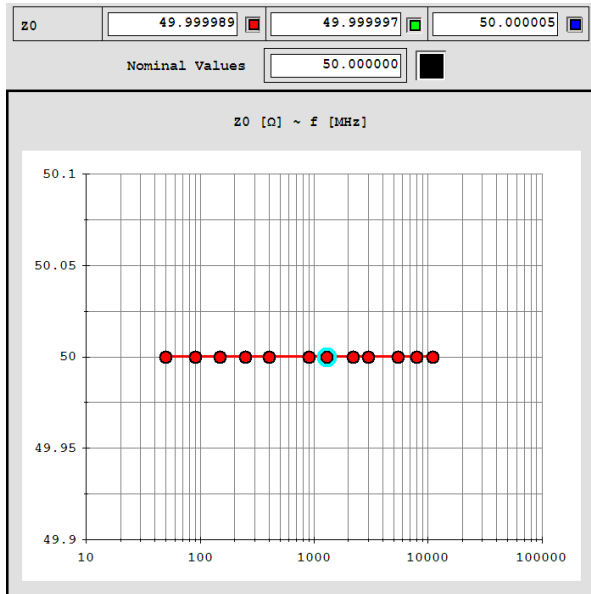


Fig. 19: Z_0 estimation and nominal values

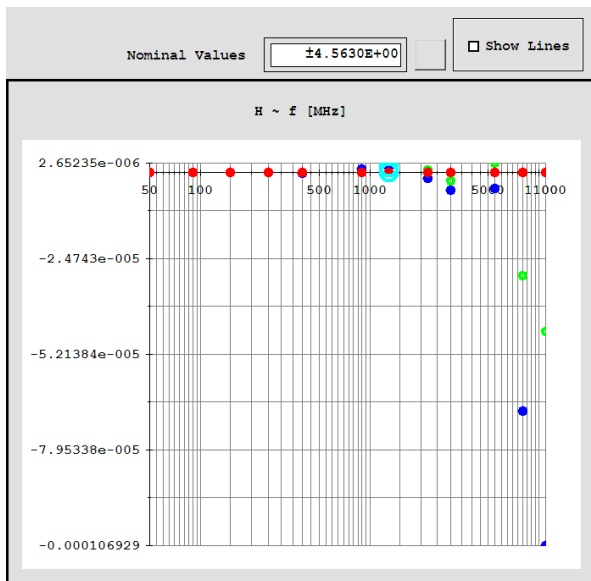
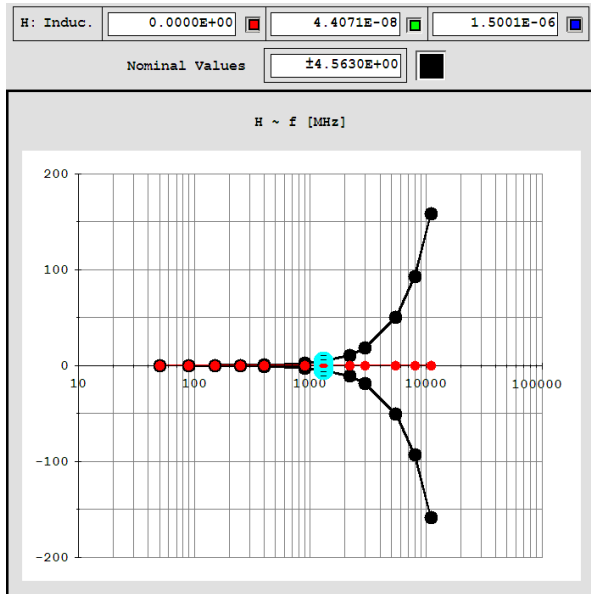


Fig. 20: H estimation and nominal values

[tInomiva] : TRANSMISSION LINE NOMINAL VALUES WITHOUT TOLERANCE...

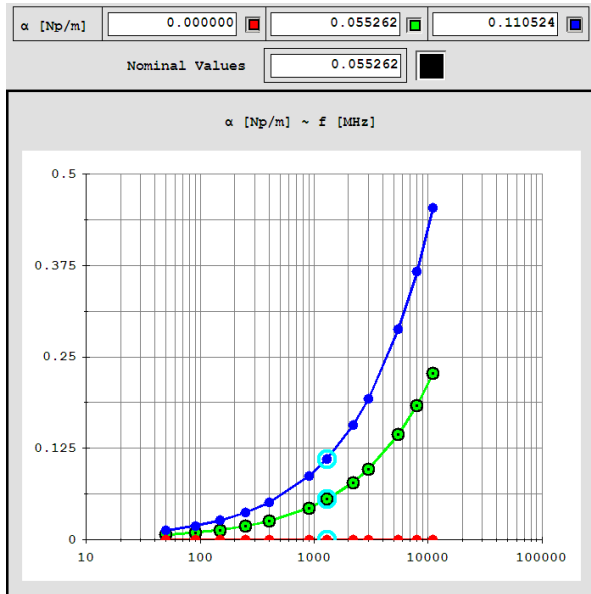


Fig. 21: α estimation and nominal values

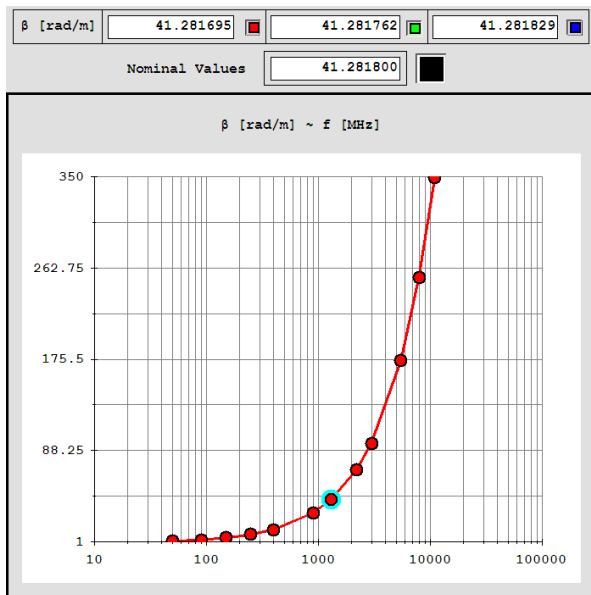


Fig. 22: β estimation and nominal values

α , β , R_0 , X_0 from Constant R , L , G , C

The next window of [tlnomiva] concerns the investigation of the propagation characteristics behavior with frequency when the circuit coefficients remain constant. The question is, is there any possibility this case to be true in real transmission lines or it is simply a matter of theoretical research as a mathematical exercise?

Well, even if it is only an academic problem it has a considerable interest by itself. From the one hand, (1)-(4) show that if $X_0 = 0$ then R , L , G , C become frequency independent. But this means the Heaviside term is equal to zero. From the other hand, the C distributed circuit coefficient is almost constant over a wide frequency range and L has a small variation. Thus, R and G are the most variable coefficients, and G has in most cases rather small values compared with R [2]. In addition, as it is stated in [2], there is a range of low frequencies over which R , L , G , C can be considered effectively constants. Thus, it is worthwhile to examine the relation of all the four propagation characteristics with frequency as the four circuit coefficients take specific values.

The developed window of [Constant : (R,L,G,C)-->(α , β ,

R_0, X_0)~f] is shown in Fig. 23. It opens with the [Single] frequency as the default state and with some predefined values. The user may type the RLGC coefficients and the desired frequency or frequency range. When [Range] is activated then the text boxes contain the values of all the quantities at the middle frequency and the buttons for plots are enabled. In this figure the predefined values for RLGC was used and the range [0.001, 1000] [MHz] was selected. A in [dB/100m] is depicted in the chart with the [Draft-Min Max] enabled and with [Show Lines] unchecked.

Fig. 24 shows A of the line used in previous sections, with RLGC almost equal to their mean value at the lower frequency, to the whole permitted range, from 1 Hz to 100 GHz. Evidently there is a limit to what can be drawn in this application. The [wgnuplot A, β , R_0 , X_0 , $\alpha\beta$, νf] produces the two triples of Fig. 25, where at the right top side of the plots the RLGC values are written. The white area indicates the band of the line operating frequency. In wgnuplot application the developed script plots the (12)-(16) as functions of frequency, that is, curves are plotted and not evaluation in specific number of points.

[tlnomiva] : TRANSMISSION LINE NOMINAL VALUES WITHOUT TOLERANCE...

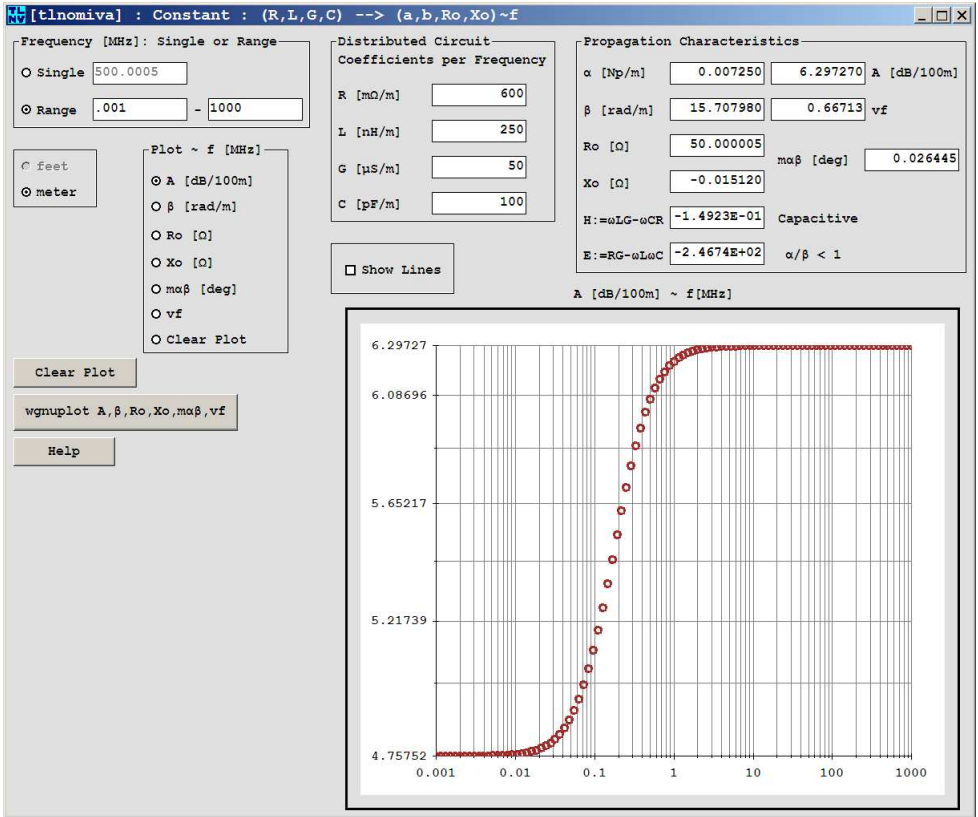


Fig. 23: [Constant : (R,L,G,C) --> (α,β,Ro,Xo,~)f] - [Range]

Thus, considering a much lower frequency range and a range for A between its minimum and maximum value, which substantially differ slightly, and plotting A function in wgnuplot, we get Fig. 26, where we distinguish the form of "S" we have seen before in Fig. 23 for the first line example.

Six text files are written in the directory of [tlnomiva], which are used from the

[wgnuplot.exe], with specific filenames of obvious meaning:

A-function	B-function
Ro-function	Xo-fuction
maβ-function	vf-function

In order to emulate the curve structure in the current version of [tlnomiva], the mentioned relations are evaluated in 100 points equally spaced in the logarithmic scale of frequency f in [MHz].

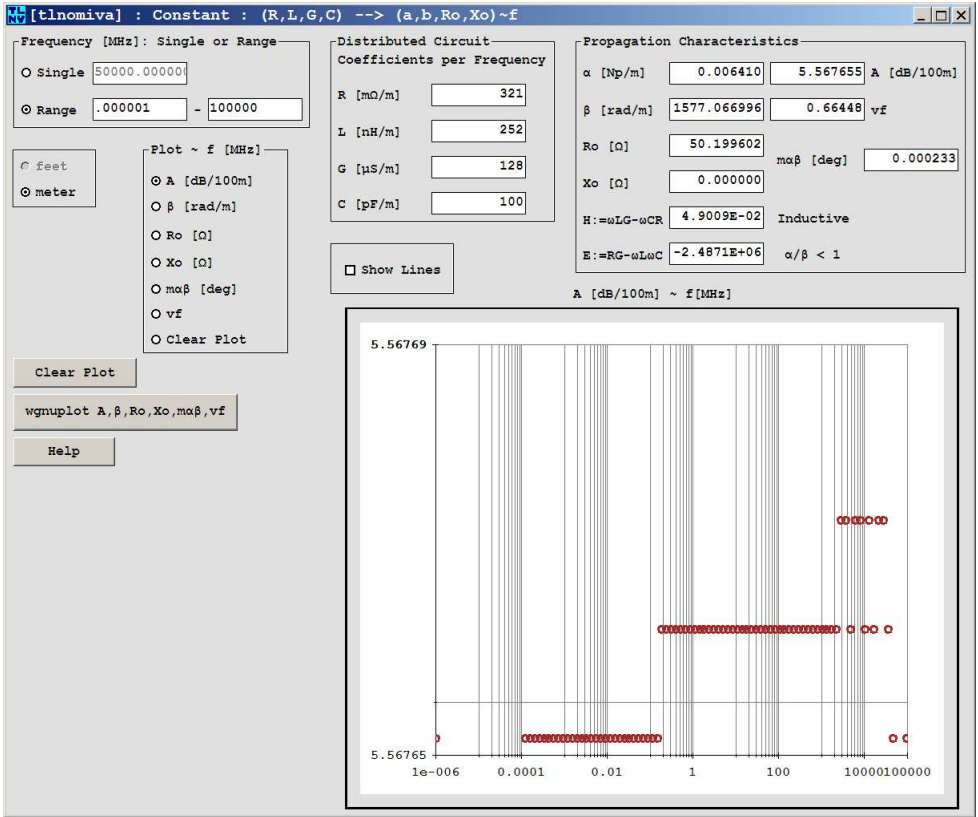


Fig. 24: A [dB/100m] versus f [MHz] with Draft-MinMax

A significant characteristic of this window is that when the [Range] is selected and one of the six quantities is plotted, then every change to the value of any of the four RLGC will immediately cause the change of the plot. All the other features are the same with the previous windows.

Using this feature of some kind of interaction and varying slightly by one (1) the

value of C and particularly by varying the value of L significantly, we get Fig. 27 for a transmission line with R, L, G, C equal to 321 [mΩ/m], 111 [nH/m], 128 [μS/m] and 100 [pF/m], where the velocity factor seems to take values larger than its upper limit of unit (1) (red), from 2.6 [MHz] and above. A fact that needs further research, and restates the issue of line definition.

[tInomiva] : TRANSMISSION LINE NOMINAL VALUES WITHOUT TOLERANCE...

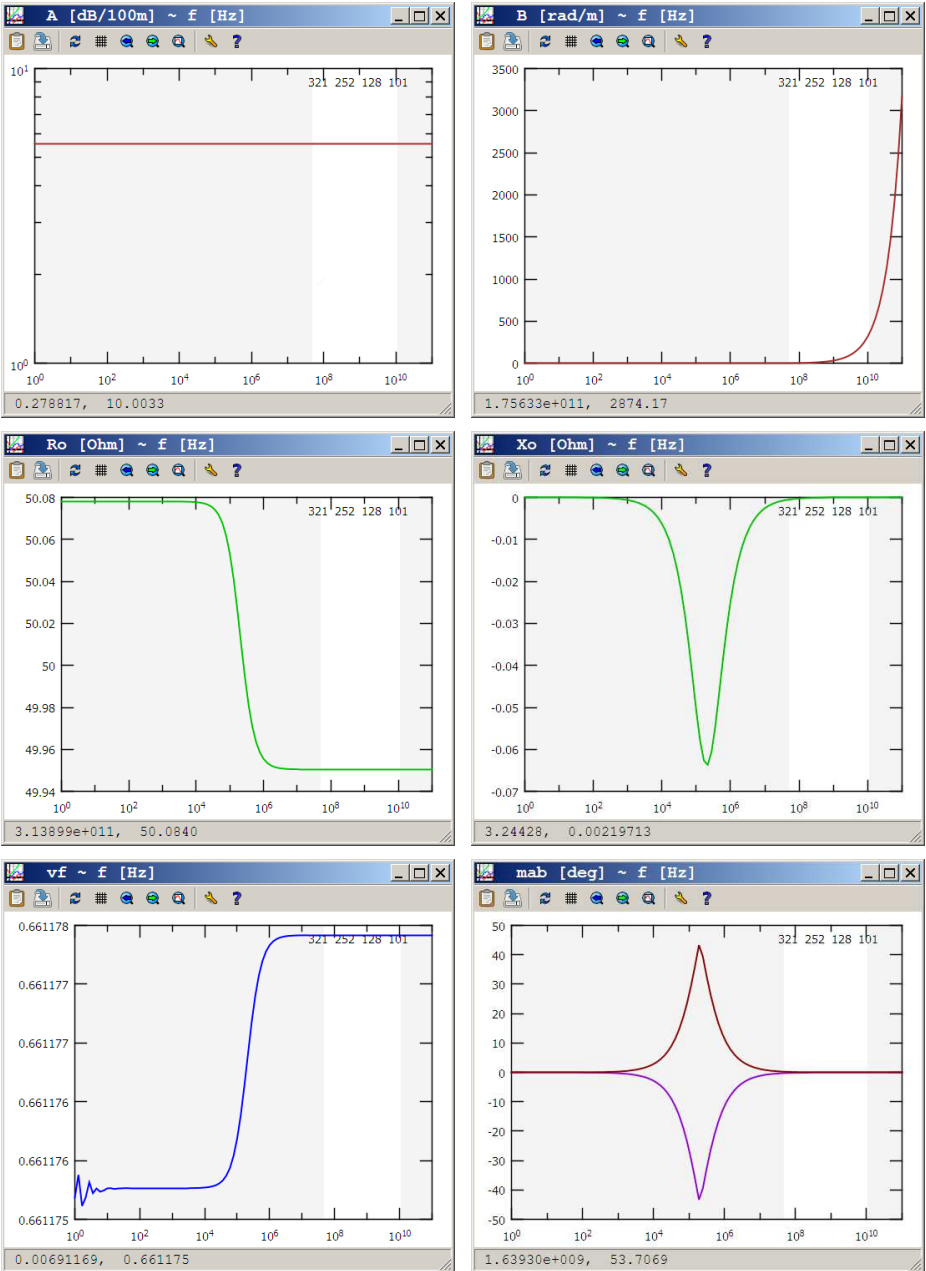


Fig. 25: A , β , R_o , X_o , v_f , mab from [wgnuplot]

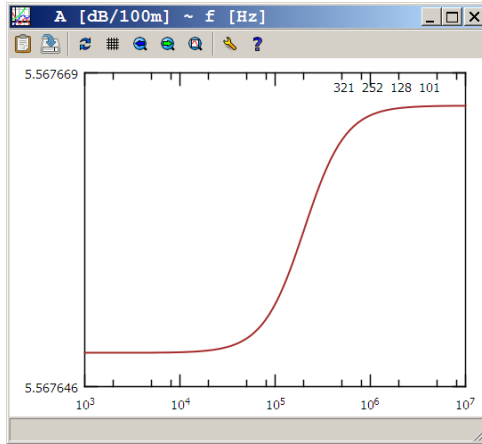


Fig. 26: A [dB/100m] versus f [MHz] from [wgnuplot]

Final Remarks

There are two important matters. The first concerns the application [tlnomiva] itself and the second the way that the available cable specifications can be exploited.

1. In order to avoid unpredictable errors in calculations, caused by the different notation of decimal symbol used in various local MS Windows versions, a decision has to be made. Thus, the dot "." was selected to be the decimal symbol, as well as, the comma "," as the digit grouping symbol - although the later is not used at all here. Notably, this choice is a mandatory requirement for [wgnuplot], which does not recognize comma as decimal symbol. Hence, the window of Fig. 28 appears on the screen just after opening the appli-

cation when a non-dot definition exists in the Regional Settings of Control Panel.

2. The transmission line used to serve as an example of the features of the [tlnomiva], is the RG 214 cable and its specifications which are given in [5]. Since, only four (4) values for the attenuation factor A in [dB/100ft] are explicitly reported there, we decided to use the accompanying chart, which covers the whole operating frequency range from 50 [MHz] to 11 [GHz].

Fig. 29 shows a straight line for A in the logarithmic chart. Such a line can be represented by:

$$y = k x^\lambda \quad (17)$$

that is:

[tlnomiva] : TRANSMISSION LINE NOMINAL VALUES WITHOUT TOLERANCE...

$$\begin{aligned} \log(y) &= \log(k) + \lambda \log(x) \\ &= a \log(x) + b \end{aligned} \quad (18)$$

where $a=\lambda$ and $b=\log(k)$, and from (17) and (18) we take:

$$y = 10^b x^a \quad (19)$$

Then, we graphically estimate the coordinates of the starting and ending points of the straight line in Fig. 29, as well as, we cross check the results by using the [OptiGraph] application [6] as it is shown in Fig. 30. After that, we formulate and solve the following linear system:

$$\begin{aligned} \log(1.7) &= a \log(50) + b \\ \log(60) &= a \log(11000) + b \end{aligned} \quad (20)$$

and by using the Aurora Scientific Calculator SC 500 Plus [7], the solution for a and b is given, with nine (9) decimal digits, as follows:

$$a = +0.660727178$$

$$b = -0.892106736$$

from which we finally have:

$$A_{[\text{dB}/100\text{ft}]} = \frac{0.128201546}{0.3048} f_{[\text{MHz}]}^{0.660727178}$$

In this way, since A has now an analytical expression in terms of frequency, we can determine as many points as we like, that is, for example, those of three (3) sig-

nificant figures we put in the grid of Fig. 6.

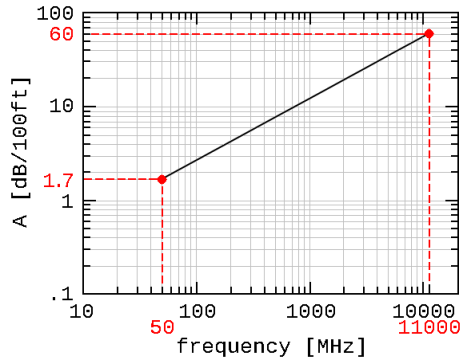


Fig. 29: Extracting analytical expression from a LogLog plot

Conclusion

The limits of what can be estimated or predicted using precise formulation from the nominal values without tolerance of A , νf , and Z_0 , which are usually given nowadays as cable specifications for transmission lines, without taken into account the cut-off frequency, was investigated in this paper.

It seems that the curves for all the involved quantities have more or less the same form, as it was expected and explained by their defining expressions, with a possible differentiation of course in their slope. These curves are strongly depended on how wide is the considered frequency window. Therefore, it is most important to pay

special attention in the operating frequency range in order to be sure that the model presented in this paper

describes adequately the transmission line characteristics in accordance with its specifications.

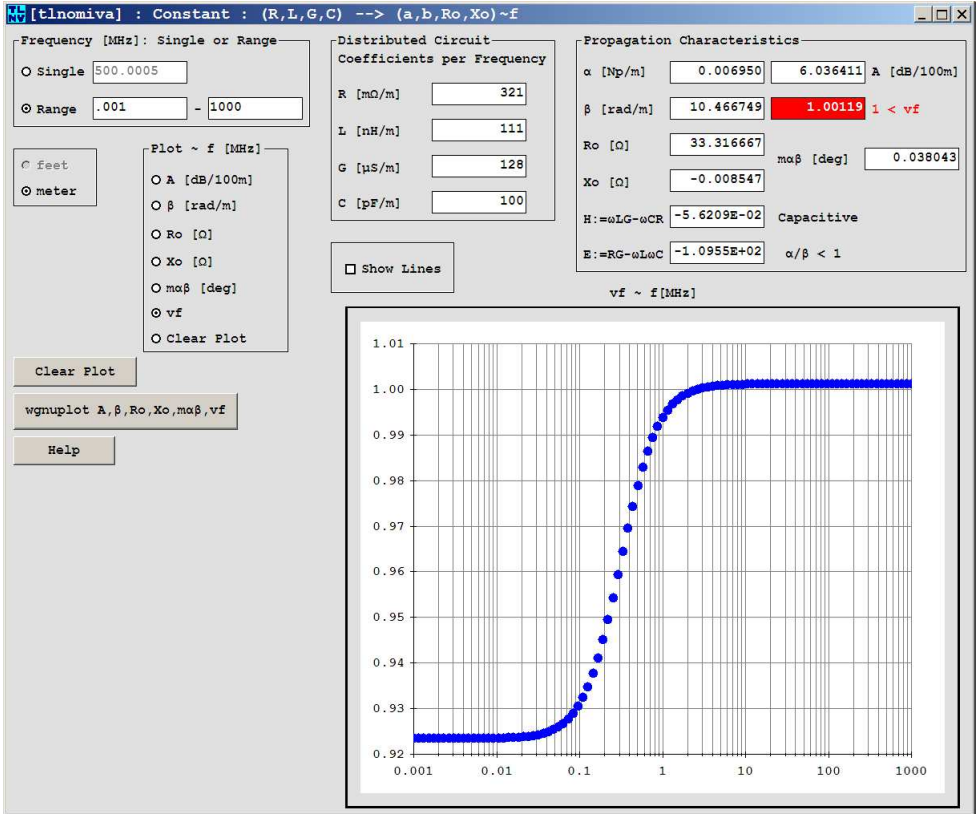


Fig. 27: RLGC for $\nu_f > 1$

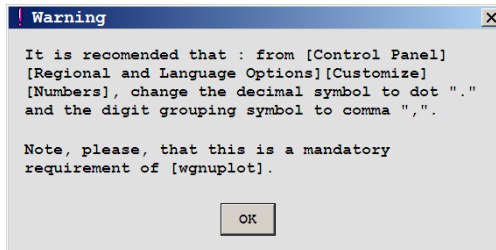


Fig. 28: Warning Message

[tlnomiva] : TRANSMISSION LINE NOMINAL VALUES WITHOUT TOLERANCE...

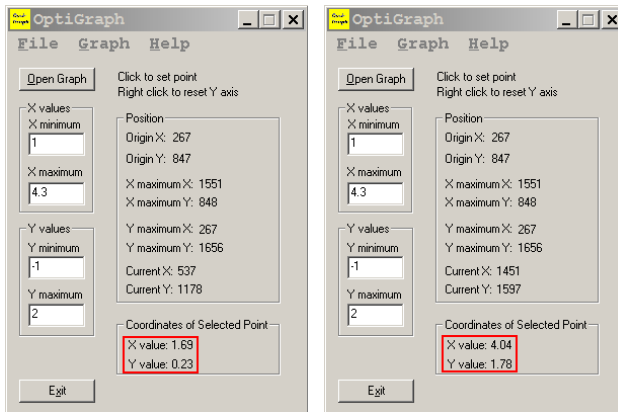


Fig. 30: [OptiGraph] : Starting and Ending points

The [tlnomiva] application is developed and presented as a research tool. The intention is to be used: (1) as a reference in the study of the already existing approximate techniques for finding the distributed circuit coefficients and the propagation characteristics, and 2) to be expandable in order to cover: (2a) not only the case of the RLCG theoretical calculation from the cable geometrical characteristics, but in addi-

tion (2b) the case of using the new approximation method for the determination of attenuation factor, which is under current development by the authors.

Finally, the whole of [tlnomiva] software, that is the MIT licensed source code, the installation package, as well as, its future improvements, updates and upgrades, can be always downloaded from the author's website address [8].

References

- [1] Yannopoulou N., Zimourtopoulos P., "Transmission Lines - Part 1: A Precise Formulation within the Distributed Circuit Model", FunkTechnikPlus # Journal, Issue 9, Year 3, 2016, pp. 369 - 389, under revision with expanded additions
www.otoiser.org/index.php/ftpj/issue/view/2016.01.31
- [2] Chipman R.A., "Transmission Lines", McGraw-Hill, 1968, pp. 15, 17, 26, 31 - 32, 42, 44, 47, 58 - 60

- [3] gnuplot,
"Version 5.0 patchlevel 3 last modified 2016-02-04":
<https://sourceforge.net/projects/gnuplot/files/gnuplot/>
- [4] "How To Programmatically Close a Single Instance of a
Windows-Based Program",
<https://support.microsoft.com/en-us/kb/176391>
- [5] "Detail, Specification Sheet: Cable, Radio Frequency, Fle-
xible, Coaxial, 50 Ohms, M17/75-RG 214 and M17/75-RG365,
MIL-DTL-17/75F, w/Amendment 2", 23 February 2010,
<https://assist.dla.mil/online/start/>
- [6] Yap Chun Wei, Optical Graph Recognition and Manipulation
Util for Win32, OptiGraph, Version 1.0, 28 January 2000
First release,
<ftp://ftp.sk.debian.org/pub/pc/educult/>
- [7] Aurora Scientific Calculator SC 500 Manual,
www.arg.op4.eu/aurora/sc500p/
- [8] [tlnomiva],
<http://arg.op4.eu/software/tlnomiva/>
*Active Links: 19.05.2016 - Inactive Links : FTP#J Link
Updates: <http://updates.ftpj.otoiser.org/>

Previous Publication in FUNKTECHNIKPLUS # JOURNAL

"Transmission Lines - Part 1: A Precise Formulation within the
Distributed Circuit Model", Issue 9, Year 3, pp. 369 - 390

*** About The Authors**

Nikolitsa Yannopoulou, Issue 9, Year 3, p. 390
yin@arg.op4.eu

Petros Zimourtopoulos, Issue 9, Year 3, p. 390
pez@arg.op4.eu

*This paper is licensed under a Creative Commons Attribution 4.0
International License - <https://creativecommons.org/licenses/by/4.0/>*