

DIVINE INFLUENCE / SIGNALING WITH THE NUMBER 137

Fernando Martinez Isla
Fer137@gmail.com

Abstract

This is fascinating, much of my life chuckling of those who thought see signs in pyramid measures, numbers in the Bible, or such stories, and now I find this:

The numbers 137 appear in some of the most important Temples or sacred constructions.

Greek Temples: Parthenon, Artemis Temple, and Hephaestus Temple.

Ancient Egypt: Great Pyramid, and Horus Temple.

The Bible: Noah's Ark, Tabernacle of Moses, and Solomon's Temple.

Christianity: St Peter's Basilica, and "The Last Judgment" on Sistine Chapel.

All measured in meters directly. Without esoteric calculations. No gimmicks.

TEMPLE / CONSTRUCTION	MEASURE	DIMENSION	REFERENCES
CLASSICAL GREECE POLITEISM			
PARTHENON	13.7 m	Height	[2]
ARTEMIS TEMPLE	137 m	Length	[3]
HEPHAESTUS TEMPLE	13.7 m	Width	[4]
ANCIENT EGYPT			
HORUS TEMPLE	137 m	Length	[6]
GIZA PYRAMID	137 m	Height	[5] [28] (*)
JUDAISM. BIBLE			
SOLOMON TEMPLE	13.7 m	Height	[10] [9] [9a] (**)
MOSES TABERNACLE	13.7 m	Length	[11] [9] [9a]
NOAH'S ARK	137 m	Length	[7] [8] [9a]
NOAH'S ARK	13.7 m	Height	[7] [9] [9a]
CHRISTIANITY			
ST PETER'S BASILICA	137 m	Height	[24] (***)
ST PETER'S BASILICA	137 m	Interior Width	[25]
SISTINE CHAPEL. <i>The Last Judgment.</i>	13.7 m	Height	[26]

(*) Some sources say 138.7 , others report currently 137 m.

(**) Google cubit conversion directly. Also biblical cubit : https://en.wikipedia.org/wiki/Cubit#Biblical_cubit

(***) The tip of the cross at 136.6, and with the lightning rod complete 137.

The likelihood of a measure begins with digits 137 according to [Benford's Law](#) is:

$$\text{Log} (1 + 1/137) = 0.00315 = 0.315\% \quad [1]$$

The frequency of occurrence in these measurements is much higher than expected.

Length, height, width. This "signs" suggests that Divinity is composed of different dimensions.

I think this can be considered the first proof of the existence of something Divine or unknown in the world, acting for millennia, and now comes to light.

Note that all these measures are in meters. The fact that in the United States use feet and inches allowed numerous Bible scholars did not see it easily. (450 feet or 45 feet is not flashy)
 It is a phenomenon that is generated over centuries and millennia, step by step, throughout diverse cultures. (Adoption of the metric system in the wake of the Enlightenment, millennia later from some of these constructions) Later I will discuss further this process.

To avoid mistrusts I will remove from statistical calculations some possible doubtful or convoluted cases:
 The height of Great Pyramid of Giza. (Some sources say 138.7, and others 137)
 The interior width of St.Peter Basilica. ("Interior width" is a measure more convoluted)
 The Last Judgment in Sistine Chapel. (Not the dimension of a construction, but an interior paint)

So for best and more homogeneous statistical calculations are these 9 cases:

PARTHENON	13.7 m	Height	[2]
ARTEMIS TEMPLE	137 m	Length	[3]
HEPHAESTUS TEMPLE	13.7 m	Width	[4]
HORUS TEMPLE	137 m	Length	[6]
SOLOMON TEMPLE	13.7 m	Height	[10] [9] [9a]
MOSES TABERNACLE	13.7 m	Length	[11] [9] [9a]
NOAH'S ARK	137 m	Length	[7] [8] [9a]
NOAH'S ARK	13.7 m	Height	[7] [9] [9a]
ST PETER'S BASILICA	137 m	Height	[24]

If we suppose that there may be 50 possible "divine constructions" as famous or prominent as these, and considering that in each there are 3 dimensions: height, length, width, then would be 50x3=150 measures:
 n=150, k=9, p= 0.00315

Binomial Probability (n=150,k>=9,p=0.00315) = 1.7E-9 Mean: 0.4725 Standard Deviation: 0.6863
 P-Value: 1.7E-9 Statistic Significance: 12.4 sigma

Even if we assume 100 constructions so divinely important:
 n=300, k=9, p= 0.00315

Binomial Probability (n=300,k>=9,p=0.00315) = 6.44573E-7 Mean: 0.945 Standard Deviation: 0.9706
 P-Value: 6.44E-7 Statistic Significance: 8.3 sigma

<http://vassarstats.net/binomialX.html>

It can also make more focalized, less chaotic, with the most relevant:

- In the Earth's gravitational field, the height is the measure most singular (length and width not)
 - The basis of our civilization are said to be the Greco-Roman classical culture, and the Judeo-Christian.
- The three most obvious temples about it:

PARTHENON	13.7 m	Height	[2]
SOLOMON TEMPLE	13.7 m	Height	[10] [9] [9a]
ST PETER'S BASILICA	137 m (**)	Height	[24]

Probability that a measure begins with 137. Benford's Law: $\text{Log}(1 + 1/137) = 0.00315$

All three:

Probability $0.00315^3 = 3.12E-8$ Mean: 0.0095 Standard Deviation: 0.0971
 P-Value: 3.12E-8 Statistic Significance: 30 sigma

Even assuming twice as possible temples. (Other possible religions or relevant hypothetical examples)

Binomial Probability (n=6,k>=3,p=0.00315) = 6.2 E-7 Mean: 0.0189 Standard Deviation: 0.1373

P-Value: 6.2 E-7 Statistic Significance: 21 sigma

Also we can see it considering the most relevant constructions or temples in the Bible, which measures are mentioned (All three is said to have been originated by divine inspiration)

Obviously: Noah's Ark, Moses Tabernacle, Solomon Temple.

SOLOMON TEMPLE	13.7 m	Height	[10]	[9]	[9a]
MOSES TABERNACLE	13.7 m	Length	[11]	[9]	[9a]
NOAH'S ARK	137 m	Length	[7]	[8]	[9a]
NOAH'S ARK	13.7 m	Height	[7]	[9]	[9a]

Three dimensions for three cases: n=9.

Binomial(n=9,k>=4,p=0.00315) = 1.22 E-8 Mean: 0.0284 Standard Deviation: 0.1681

P-Value: 1.22 E-8 Statistic Significance: 23.6 sigma

In High Energy Physics it is considered to have made a discovery (Eg the Higgs boson) when is achieved 5 sigma of statistical significance. Five Sigma equals a probability that the observed data were by chance 0.000057% in a normal distribution, a case in 1.7 million.

Here there are much more, even 20 – 30 sigma.

Generally people have a mental filter that makes them reject the existence of this phenomenon

For two reasons:

1- Other similar things, which are often heard, turn out to be nonsense.

2- It seems to defy freewill.

Sometimes one feel inspired, joyful, and does something. I think the combination of many of these inspirations are those that give rise to these phenomena. As if one were part of the Soul of the Universe, Divine Inspiration, or whatever you want to call. It is a subject I will write more extensively soon.

The publication of this article marks a before and an after in the History (In my sparingly humble opinion:)

From now on, if a temple is built with these measures, it could be intentional rather than unconscious inspiration.

The scientifically most important case is the inverse of fine structure constant. $1 / \alpha = 137.035999$
 Being a dimensionless quantity, it has the same numerical value in all systems of units.

Some notable cases, scientific or miscellaneous curiosities:

Inverse of the Fine Structure Constant.	137.0359	[13]
The Age of the Universe.	13.7 GigaYears	[14]
Golden Angle	137.5°	[23]
M-Theory Dimensions	1 time, 3 space, 7 hidden	[15] “ According to Witten, M should stand for “magic”, “mystery”, or “membrane” according to taste, and the true meaning of the title should be decided when a more fundamental formulation of the theory is known “
Kabbalah. Its own Gematria.	137	[17] [12]
Atoms in Chlorophyll	137	[16] A fundamental pillar of life on Earth. “Chlorophyll is an extremely important biomolecule, critical in photosynthesis, which allows plants to absorb energy from light.“
Caffeine formula	1,3,7-Trimethylxanthine	Currently an important driver of human intellect and laboriousness. 100 millions cups/hour.

Examples in images:

Parthenon: Height 13.7 meters. [2]

Parthenon
Παρθενώνας

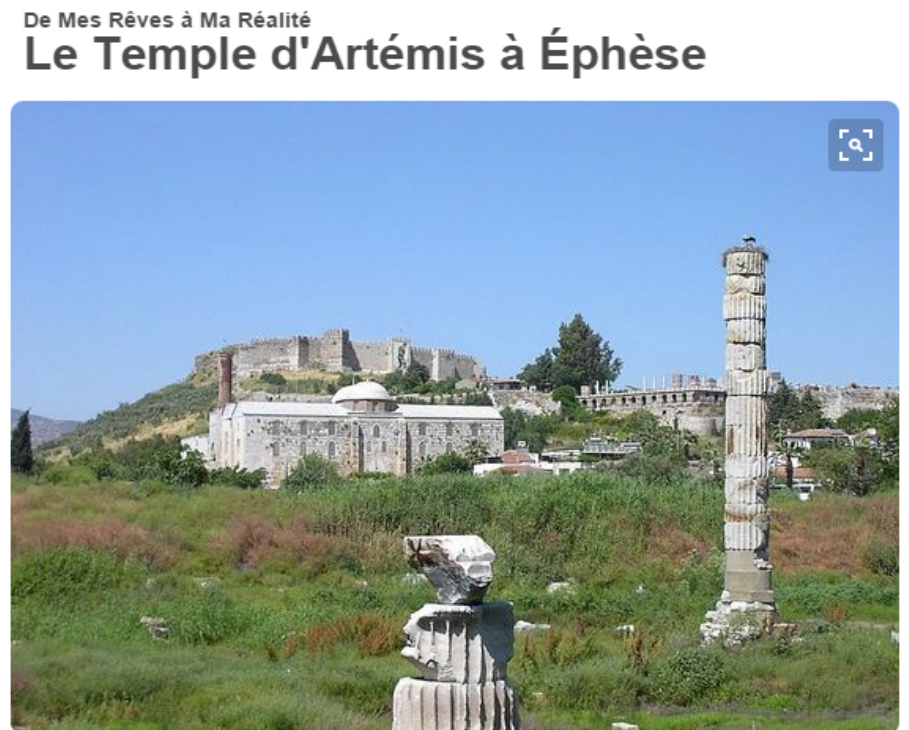


The Parthenon

General information

Type	Temple
Architectural style	Classical
Location	Athens, Greece
Current tenants	Museum
Construction started	447 BC ^{[1][2]}
Completed	432 BC ^{[1][2]}
Destroyed	Partially on 26 September 1687
Owner	Greek government
Height	13.72 m (45.0 ft)

Artemis Temple: Length 137 meters. [3]



Artículo de
WordPress.com

Leerlo

Les dimensions colossales (**137,74 m** de longueur et 71,74 m de largeur) du Temple d'Artémis à Ephèse et la richesse de sa décoration expliquent qu'il fasse partie des Sept merveilles du monde.

Hephaestus Temple: Width 13.7 meters. [4]

Description [\[edit \]](#)

Many architects have been suggested, but without firm evidence one refers simply to 'The Hephaisteion Master'. The temple is built of marble from the nearby Mt. Penteli, excepting the bottom step of the *krepis* or platform. The architectural sculpture is in both Pentelic and Parian marble. The dimensions of the temple are **13.708 m** north to south and 31.776 m east to west, with six columns on the short east and west sides and thirteen columns along the longer north and south sides (with the four corner columns being counted twice).



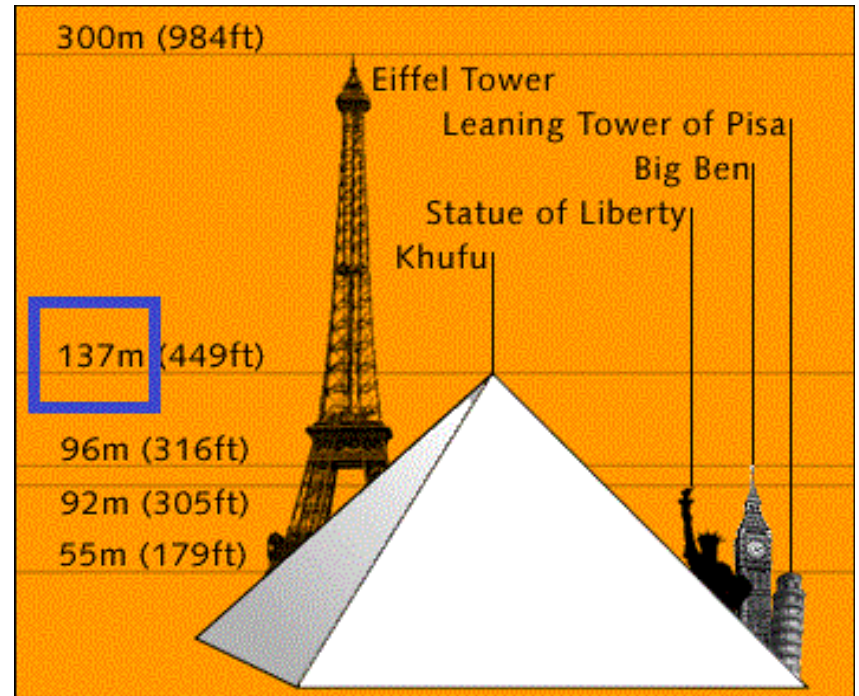
Pyramids: Height 137 meters. (contemporary) [5]

Khafra's Pyramid – Giza



description

- This pyramid was built around the year 2500 b.c. as the tomb of the king chephren who ruled egypt for 25 years. This pyramid reaches 137 meters in height , its base measures 210 meters per side . This is the only pyramid which is still covered with lime at the top.



Horus Temple: Length 137 meters. [6]

El Templo de Horus (Edfú)



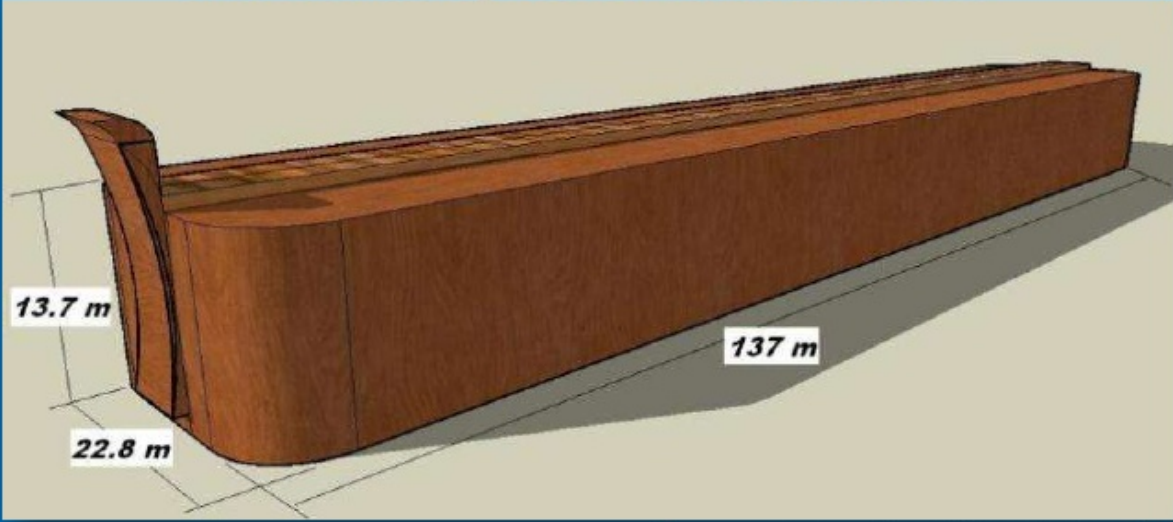
El templo de Edfú, dedicado al dios halcón Horus, fue comenzado el año 237 a. C. por Ptolomeo III Evérgetes I. En el año 212 a.C. se habían concluido las obras de la parte interior por Ptolomeo IV Filopátor, y se decoró en el 142 a.C. por Ptolomeo VIII Evérgetes II quien también terminó la primera sala hipóstila. Las obras en su totalidad no concluyeron hasta el 57 a.C con la colocación de las puertas.

Es el templo mejor conservado de Egipto y el más importante después del de Karnak. Mide 137 metros de longitud por 79 de ancho y 36 de altura, y representa la típica construcción de los templos con el pilono, el patio, 2 salas hipóstilas, una cámara de ofrendas, la sala central y el santuario. Es característica la iluminación del templo, con habitaciones cada vez más pequeñas que impedían el paso de la luz gradualmente hasta llegar al oscuro santuario, que recibe la iluminación sólo desde el eje. Entre las columnas y en el techo existen pequeñas aberturas que permitían el paso de la luz a determinadas habitaciones. Está orientado al sur, de forma inusual, posiblemente debido a la propia naturaleza de la zona.

Noah's Ark: Length 137 meters, Height 13.7 meters.

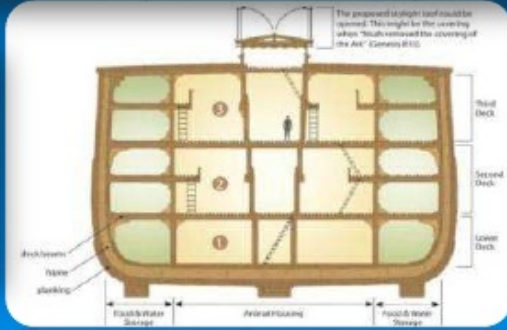

Genesis 6:15 "...The length of the ark shall be three hundred cubits, the breadth of it fifty cubits, and the height of it thirty cubits." [7] cubits - meters conversion [8]

Biblical specs of the Ark



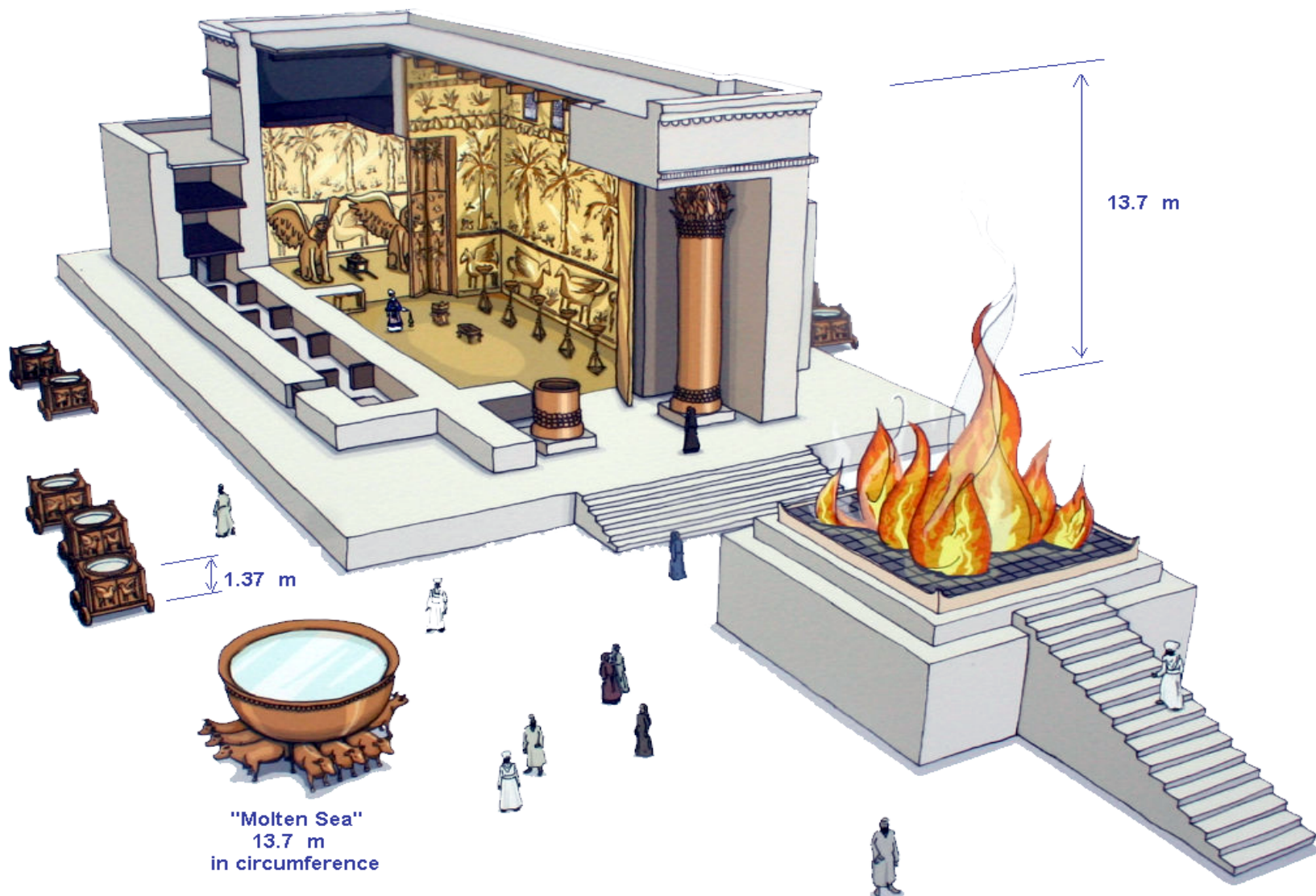
13.7 m
137 m
22.8 m

Assuming an 18-inch cubit [45.72 centimeters], Noah's Ark would have had a cubic volume equal to **569 modern railroad stock cars**.
3 floors. 40,000 animals in 167 RR cars

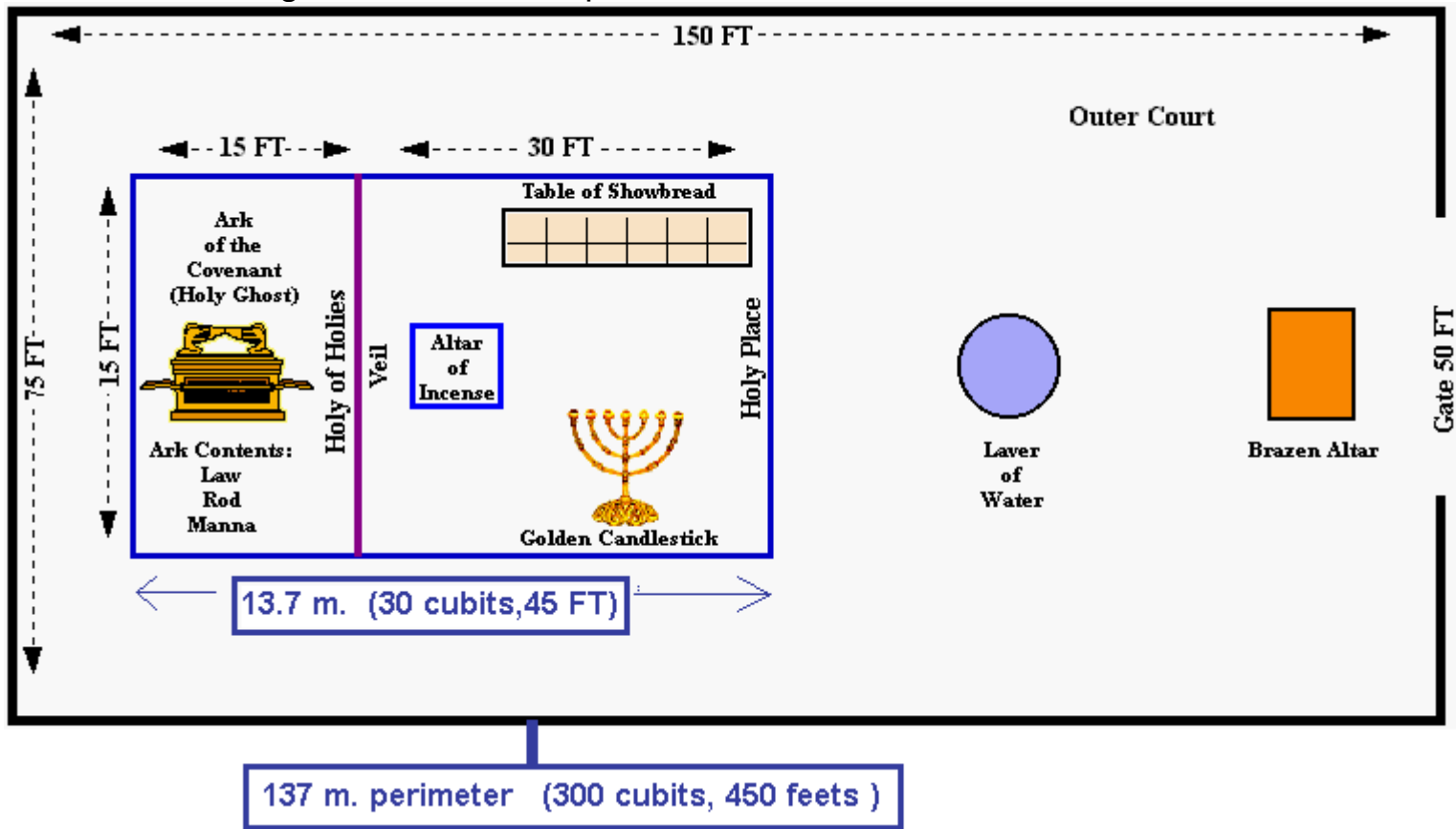


The proposed wooden roof could be opened. This might be the covering of the Ark. (Genesis 6:16)

Solomon's Temple. Height 13.7 m [10] [9]



Tabernacle of Moses. Length 13.7 m. Court perimeter 137 m.



ST PETER'S BASILICA	137 m (**)	Height	[24]
ST PETER'S BASILICA	137 m	Interior Width	[25]
SISTINE CHAPEL. <i>The Last Judgment.</i>	13.7 m	Height	[26]

Papal Basilica of St. Peter in the Vatican
Basilica Papale di San Pietro in Vaticano (Italian)
Basilica Sancti Petri (Latin)

Main facade of St. Peter's Basilica

Architectural description

Architect(s)

- Donato Bramante
- Antonio da Sangallo the Younger
- Michelangelo
- Jacopo Barozzi da Vignola
- Giacomo della Porta
- Carlo Maderno
- Gian Lorenzo Bernini
- Carlo Fontana

Specifications

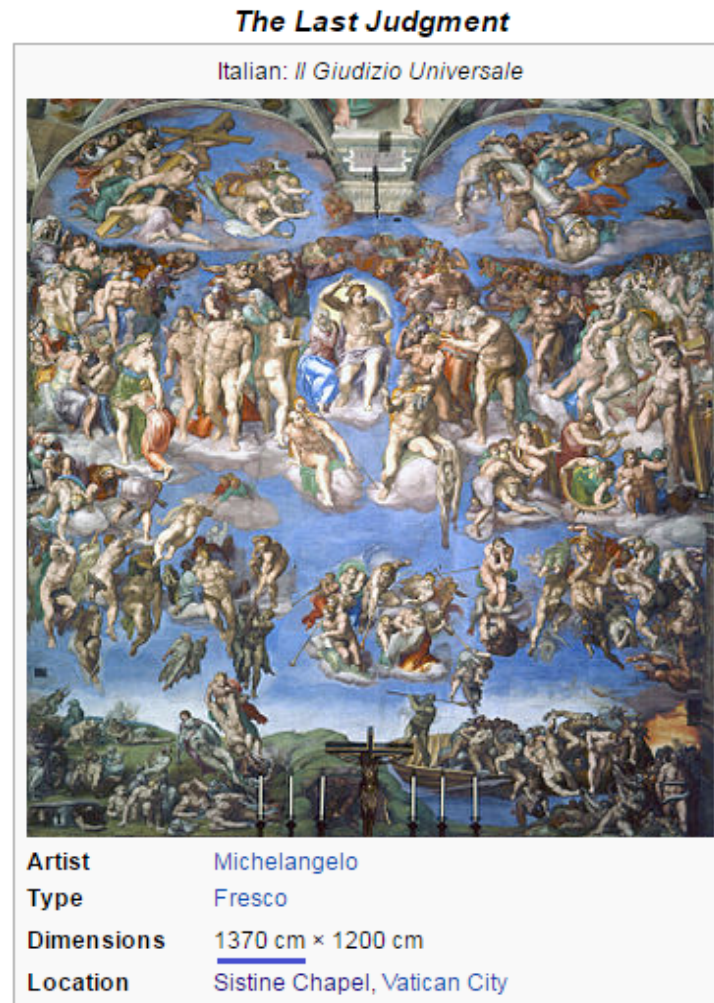
Length	730 feet (220 m)
Width	500 feet (150 m)
Height (max)	448.1 feet (136.6 m) ^[1]
Dome dia. (outer)	137.7 feet (42.0 m)



... with the lightning rod 137 m.
 Note how the lightning indicates the point with impressive precision.

(**) The end of the cross at 136.6, and with the lightning rod 137

Note how the lightning connects some centimeters above the cross, indicates the point with impressive precision. I interpret it as that Divinity certifies something of Christianity. But something about the cross is not nice for the Divine (Instrument of suffering and death. Imagine what Jesus could opine about many disrespectful representations in bloody crucifixes.) And therefore the 137 appears above, with the lightning showing it.



CONCLUSIONS ?

Considering myself a convinced atheist for much of my life, seeing this is an indescribable surprise. Divine influence acting for millenia and now it is revealed thanks to easy access to information by internet.

God ? Gods ? Angels ? The Force? Midichlorians? Virtual reality ? Cherry picking? A bit of everything? Holographic principle? M-Theory dimensions? Collective unconscious? SuperAnthropic principle? Extraterrestrial, Extra-Universe? God will tell? Divine dimensions? Gods of Olympus? A principle of Nature for things to go well and pull forward?

ACKNOWLEDGMENTS

The Universe, the Life, etc. and the Divine cause that generates it, and enlightens me to see it easily.

REFERENCES.

- [1] https://en.wikipedia.org/wiki/Benford%27s_law#Generalization_to_digits_beyond_the_first
- [2] <https://en.wikipedia.org/wiki/Parthenon>
- [3] https://fr.wikipedia.org/wiki/Temple_d%27Art%C3%A9mis_%C3%A0_%C3%89ph%C3%A8se
- [4] https://en.wikipedia.org/wiki/Temple_of_Hephaestus
- [5] https://fr.wikipedia.org/wiki/Pyramide_de_Kh%C3%A9ops
- [6] [https://fr.wikipedia.org/wiki/Temple_d%27Horus_\(Edfou\)](https://fr.wikipedia.org/wiki/Temple_d%27Horus_(Edfou)) (In the English version there are an error)
- [7] <https://www.biblegateway.com/passage/?search=Genesis+6%3A14-15&version=KJV>
- [8] <https://www.google.es/search?q=300+cubits+to+meters>
- [9] <https://www.google.es/search?q=30+cubits+to+meters>
- [9a] https://en.wikipedia.org/wiki/Cubit#Biblical_cubit

- [10] <https://www.biblegateway.com/passage/?search=1+Kings+6:2&version=KJV>
- [11] <https://www.biblegateway.com/passage/?search=exodus+26%3A8&version=KJV>
- [12] [https://en.wikipedia.org/wiki/137_\(number\)](https://en.wikipedia.org/wiki/137_(number))
- [13] https://en.wikipedia.org/wiki/Fine-structure_constant
- [14] https://en.wikipedia.org/wiki/Age_of_the_universe
- [15] <https://en.wikipedia.org/wiki/M-theory>
- [16] <https://en.wikipedia.org/wiki/Chlorophyll>
- [17] <http://kabbalahstudent.com/the-magic-of-137/>
- [18] <https://en.wikipedia.org/wiki/Uranus>
- [19] <https://en.wikipedia.org/wiki/Pluto>
- [20] https://es.wikipedia.org/wiki/Hollywood_Sign
- [21] https://en.wikipedia.org/wiki/Julius_Caesar
- [22] https://en.wikipedia.org/wiki/Pope_Gregory_XIII
- [23] https://en.wikipedia.org/wiki/Golden_angle
- [24] https://en.wikipedia.org/wiki/St._Peter%27s_Basilica
- [25] http://romanchurches.wikia.com/wiki/San_Pietro_in_Vaticano#Measurements
- [26] [https://en.wikipedia.org/wiki/The_Last_Judgment_\(Michelangelo\)](https://en.wikipedia.org/wiki/The_Last_Judgment_(Michelangelo))
- [27] https://en.wikipedia.org/wiki/Lighthouse_of_Alexandria
- [28] <https://en.wikipedia.org/wiki/Pyramid>