

# Pair production explained in a hidden variable theory

Dirk J. Pons <sup>1</sup>, Arion D. Pons <sup>2</sup> and Aiden J. Pons <sup>3</sup>

<sup>1</sup>Author to whom correspondence should be addressed Department of Mechanical Engineering, University of Canterbury, Private Bag 4800, Christchurch 8020, New Zealand, Email: [dirk.pons@canterbury.ac.nz](mailto:dirk.pons@canterbury.ac.nz)

<sup>2</sup>University of Canterbury, Christchurch, New Zealand

<sup>3</sup>Rangiora New Life School, Rangiora, New Zealand

## POSTPRINT

Published as:

Pons, D. J., Pons, A. D., and Pons, A. J., *Pair Production Explained in a Hidden Variable Theory*, Journal of Nuclear and Particle Physics, 2015. 5(3): p. 58-69. DOI: <http://dx.doi.org/10.5923/j.jnpp.20150503.03>

Precursor publication: Internal Mechanics of Pair Production: Remanufacture of Discrete Fields in a NLHV Design Vixra (2015): <http://vixra.org/abs/1404.0051>

## Abstract

**Problem-** *Pair production is a key component of mass-energy equivalence yet the deeper processes whereby photons transform into matter-antimatter pairs are unknown. Purpose-* *A theory is presented for the mechanics of pair production at the fundamental level. Approach-* *Physical realism was accepted at the outset. A theory was developed comprising internal structures (hidden variables) and discrete fields, called the Cordus theory. Logical inference was used to determine the mechanics for pair production under these assumptions. Findings-* *Particles are found to be defined by their field emissions, with rearrangement of those fields changing the particle's identity. The process mechanics are extracted from the theory, and successfully applied to explain remanufacture of the evanescent discrete fields of the photon into the electric fields of the electron and antielectron. The mechanics also explains recoil dependency on photon polarisation. Surprisingly, it also provides a physically natural explanation for electron holes. Originality-* *The ability to set out a mechanics for pair production at the foundational level is a novel advancement, as is the ability to explain in a physically natural way why the causality involves angular orientations of the inputs (polarisation) and outputs (recoil). There is further novelty in achieving this from the non-local hidden-variable sector of physics. Implications-* *Annihilation, which is the inverse process, has also been demonstrated within this same framework. An ontological explanation for mass-energy equivalence is now available by assuming physical realism and that particles have internal structures. These explanations are logically consistent with the rest of the Cordus theory for other phenomena. The hidden-variable sector is shown to have yielded an alternative theory of fundamental physics with excellent explanatory power under physical realism. It provides novel insights into processes at the next deeper level of physics, and shows a candidate route to a new physics.*

**Keywords:** *mass-energy equivalence; annihilation; two-photon physics; Bethe-Heitler; Breit-Wheeler;*

# 1 Introduction

Mass-energy equivalence is a central principle of fundamental physics. The mathematical formalism of the process is well-established, at least at the level of the inputs and outputs. However the workings of the process at the particle level are obscure, and this is the subject of the present paper. There are two directions to the process, one being the conversion of energy into a particle-antiparticle pair (pair production), and the other the conversion of matter-antimatter pairs into energy (annihilation). The area under examination in this paper is the pair production process, and a non-local hidden-variable (NLHV) theory is applied to elicit a proposed explanation of the process.

Pair production is the process of creating a particle-antiparticle pair from photon energy [1]. A common process is two photons producing an electron and positron (antielectron). Other possible outcomes include muon and tau pairs, and the elementary fermions (quarks and leptons) generally. In all cases there needs to be enough energy in the system to produce those pairs, which for an electron at rest is 0.511 MeV, with the same again required for producing the antielectron. The pair production process may occur with a single (high energy) photon interacting with a nucleon (thereby providing a platform for conservation of momentum), or two photons interacting together. Pair production is an important process among the many others that occur in high-energy collisions involving atoms [2]. It affects other processes such as ionization. Furthermore, it contributes to energy loss in these impact situations, and also in supernovae.

Historically the primary research interest in pair-production has been the development of models for the outputs of the process for given input energy and situational variables, e.g. [3]. This has generally been successful and current models permit an accurate prediction of outputs [4], as well as insights into the identities of the variables and the mathematical relationships between them. The outputs of the process are modelled adequately by quantum field theory (QFT). These existing approaches to understanding mass-energy equivalence are invariably based on representing *what* happens, via mathematical quantification of the process as a whole.

However there is an unanswered ontological question of *how* the internal sub-processes operate at the next deeper foundational level, particularly how the photons transform into matter-antimatter pairs.

Before showing a solution to this problem, it is necessary to identify why this is even a valid question to ask. The issue is that it is not clear, from the perspective of quantum mechanics (QM), why there should be a necessity for a physical mechanism underpinning pair production. Quantum theory is premised on particles being zero-dimensional (0-D) points. Hence it is meaningless from within that framework for particles to have internal structures or inner processes. Instead the QM perspective is that a point photon splits into a point electron and positron, merely by partitioning the energy and quantum numbers. Such an interpretation is to be expected, being merely self-consistent with the 0-D point premise that underpins quantum theory. As has abundantly been shown by the Bell-type inequalities, the idea that particles may have internal structures is fundamentally incompatible with the 0-D point premise of quantum theory.

Consequently the question of *how* the internal processes operate for pair-production is only nonsensical from the perspective of quantum mechanics. For theories where particles have internal structure, e.g. the NLHV solutions, the question is meaningful. This paper applies a specific NLHV solution, in the form of the Cordus theory, to the problem. It predicts the field transformations that would be necessary to convert a photon into a matter-antimatter pair. The specific area under examination is the creation of an electron-antielectron pair from two photons. The current work is part of a broader theory of fundamental physics that is distinct to, and positioned deeper than, quantum theory. The two should not be confounded.

This requires of the reader an open-minded consideration of whether the idea of particles being zero-dimensional points really is a fundamental requirement of physics, or is merely a construct of quantum theory. While this matter cannot be decided definitively at the present time, it is worth exploring the conceptual implications of alternative theories that are not based on the 0-D point constraint. At this early stage of the development of the alternative theory the exposition is primarily conceptual. Thus the reader will not here find a mathematical formalism or quantitative model of pair-production cross sections.

## 2 Existing approaches

Where two photons are involved, quantum electrodynamics (QED) assumes that photons do not couple directly with each other, but instead one of the photons spontaneously fluctuates into a particle-antiparticle pair, and the other photon is absorbed into (couples to) one of those particles (*two-photon physics*). The fluctuation is held to be a random event driven by the Heisenberg uncertainty principle. The particle-antiparticle pair is thought to comprise leptons or quarks, and their antiparticle, e.g. pion or kaon pairs. Feynman diagrams may be used to represent the input and output components of pair production.

The theoretical aspect of pair production that has received the most attention is the prediction of the relative likelihood of specific outcomes compared to others, with photons of different energy, hence *cross section*. Within that a particular focus area is the impact of a photon on an atom. Pair-production is one of several possible outcomes in such cases, others being Compton scattering, and energy absorption, depending on the energy of the photon. At high energy the pair-production process dominates. This is commonly modelled as a perturbation interaction between the photon and an unbound electron described in plane waves, hence the Bethe-Heitler process [5]. The probability of pair-production occurring for various input energies is then determined, and this is the cross section  $\sigma$ . This may then be compared to empirical results. Typical features of the relationship are that pair-production only occurs above a threshold photon energy, and becomes steadily more likely as energy increases, before becoming constant as the process saturates [4]. Additional complexities arise with the electron being bound in an atom, and a screened vs. bare nucleus. The cross sections depend on the atomic number of the target. A close match to empirical results is obtained for light and heavy lepton production, though a number of other coefficients and tuning factors are required [2].

Pair production may also occur by the collision of two photons [6] (Breit-Wheeler model). Another production mechanism is collision of electron and laser beams, which involves additional mechanics due to the multiphoton collisions and interactions of daughter

products with the beams [7]. Other situations that have been modelled include muons [8] and the inverse Cerenkov process [9]. Another area of complementary research is the creation of electron and electron-hole pairs in solids [10], with the input energy being plasmons as opposed to photons. Almost all the recent progress has focussed on developing more refined mathematical models with better fit to empirical results.

A deeper explanatory understanding of the mechanics is altogether lacking. More specifically, although the current models describe *what* happens, the *how* is not described. For example, the Breit-Wheeler model describes the evolution of the electron pair as something that merely appears in the mathematics, that 'one finds that at a time  $t$  [...] the wave function contains a term which may be interpreted as referring to an electron' [6]. This is totally unsatisfactory from an ontological perspective, more so from the basis of physical realism, and this deficiency has long been identified. As Dirac observed, QM has the characteristic whereby it is 'usually easier to discover the equations that describe some particular phenomenon than just how the equations are to be interpreted' [11]. Others have continue to press the point that there are interpretational difficulties with the mathematical solutions for pair production [12]. Currently mathematical models, despite their excellence in identifying the relationships between variables and predicting the outputs, have no explanatory power. Furthermore they are approximations that treat particles *en-masse* in the form of beams (multi-photons). They do not address the discrete individual interactions between photons and matter [12].

There presumably must be substantial changes required to convert a photon into an electron. Apparently a photon does not simply halve itself to make an electron-antielectron pair. Or if it does, the conditions under which it does this are not evident. Part of the problem is that QM and the Standard Model assume that particules are zero-dimensional points, without internal structure. All the many variables that a particule is known to have, such as charge, spin, mass, are considered to be abstract intrinsic variables. This rejection of inner structure makes it impossible to contemplate pair-production as involving the remanufacture of internal structure, at least not from within the quantum theory. Yet QM has no alternative explanation to offer. The situation is therefore an ontological singularity for QM. At the same time the Standard Model proposes that all interactions occur via exchange of specialised messenger particles, the gauge bosons, with that for electro-magnetism being the photon. So the photon has a dual and potentially conflicted role of being both the messenger particle, and the source for pair production, and it is unclear how those roles are differentiated.

Thus the mechanisms for converting a photon into a matter-antimatter pair are unknown. This is an obstacle to the understanding of many phenomena in fundamental physics, including asymmetrical genesis: if we do not understand the first stage of conversion into particle-antiparticle pairs, then it is going to be difficult to find where the asymmetry occurs. There is a need for theories that better explain the pair-production processes.

### **3 Purpose and Approach**

The purpose of this work was to explore the feasibility of explaining pair-production from the non-local hidden-variable (NLHV) sector. This may not seem a promising sector in which to prospect for foundational solutions, given that it has historically included only one

serious candidate, the de-Broglie-Bohm theory [13] [14] which has not progressed far. Furthermore, the Bell type inequalities [15-17] preclude *local* hidden-variable solutions, at least for 0-D point particles like those assumed for quantum mechanics. While no mathematical proof has yet excluded all *non-local* hidden-variable solutions, there is the practical problem that the sector has failed to provide new candidate solutions for evaluation. Consequently the whole hidden-variable sector is generally considered either non-viable or at least non-productive.

Nevertheless the hidden variable sector has potential, as demonstrated in recent developments of the Cordus theory [18]. This is a NLHV candidate solution, with a specific design of internal structures. It has been used to explain many fundamental phenomena including wave-particle duality, unification, nuclides (H to Ne), and time [18] [19] [20] [21].

The approach in the present paper started with the NLHV design of the Cordus theory, specifically the matter-antimatter species differentiation [22], and the annihilation mechanisms [23]. These explanations were based on the concept that the nature of a particule, electron, photon, etc., is determined by its characteristic field structures, which are proposed to be discrete. The re-allocation of these discrete forces has been used to explain the annihilation process [23]. The Cordus theory also has a methodology called HED mechanics that represents the principles for conservation and transformation of discrete fields, hence transmuted the identity of particles [24]. The name arises as it represents the states of the discrete fields or hyperfine fibril emission directions (HEDs). The present paper applies the same principles to the pair production situation.

## 4 Results

The present work is a logical extension of a prior concept for a NLHV design, and this is briefly explained first. Then we explain the proposed mechanics for manipulating discrete force structures, followed by application to the pair-production situation.

### 4.1 Cordus theory

The Cordus theory has been described elsewhere [24], and is only briefly summarised here. The core conjecture is that all particles have inner and outer structures comprising two *reactive ends* some distance apart (*span*), connected by a *fibril* (hence *cordus*), and emitting discrete forces [18]. This is called a *particule* to differentiate it from the zero-dimensional (0D) point idea of quantum mechanics. The fibril is a persistent structure that provides instantaneous connectivity and synchronicity between the two reactive ends, but does not interact with matter. The reactive ends are energised sequentially (at the de Broglie frequency), during which they emit *discrete forces* out into the external environment. The locus of these over time defines a type of flux line called a *hyperfine fibril* (hence *hyff*). The discrete forces are emitted in three spatial directions (hence *hyff emission directions*, HEDs), and hence space is filled with a *fabric* of discrete forces [25]. The quantity, direction, and arrangement of these discrete forces determine the type of particule and are responsible for charge, mass, matter-antimatter species differentiation, and spin [22]. The discrete forces are responsible for the electro-magneto-gravitational and strong interactions, though the theory uses the term *synchronous interaction* in place of the strong, as this better describes the proposed nature of the interaction [19].

The resulting structures of the photon, electron, and antielectron (positron) are shown in Figures 1-3. Why these specific structures, as opposed to others? These are simply the structures that emerged from the systems design approach. The systems approach was underpinned by the premise that physical realism prevails (physical phenomena have physical causality). The process took known functionality of the system (e.g. the empirical evidence of fundamental physics in the double slit device), and then applied an iterative creative process to infer the inner structures that would be necessary and sufficient to explain those behaviours. This is an independent ex nihilo conceptual process that is not reliant on precursor concepts from prior theories of physics. The figures show the particle designs that emerged.

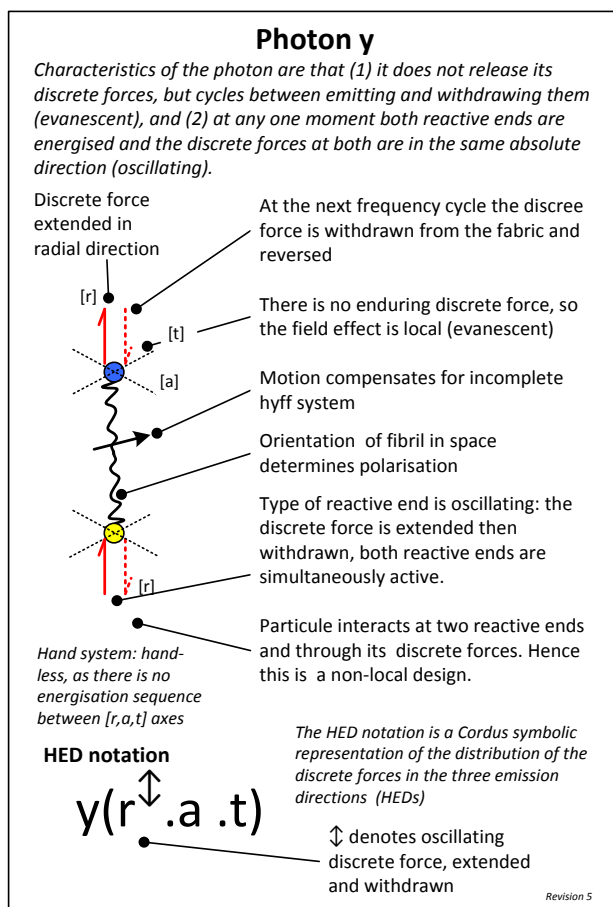


Figure 1: Predicted inner structures of the photon in the Cordus theory. From [23] with permission.

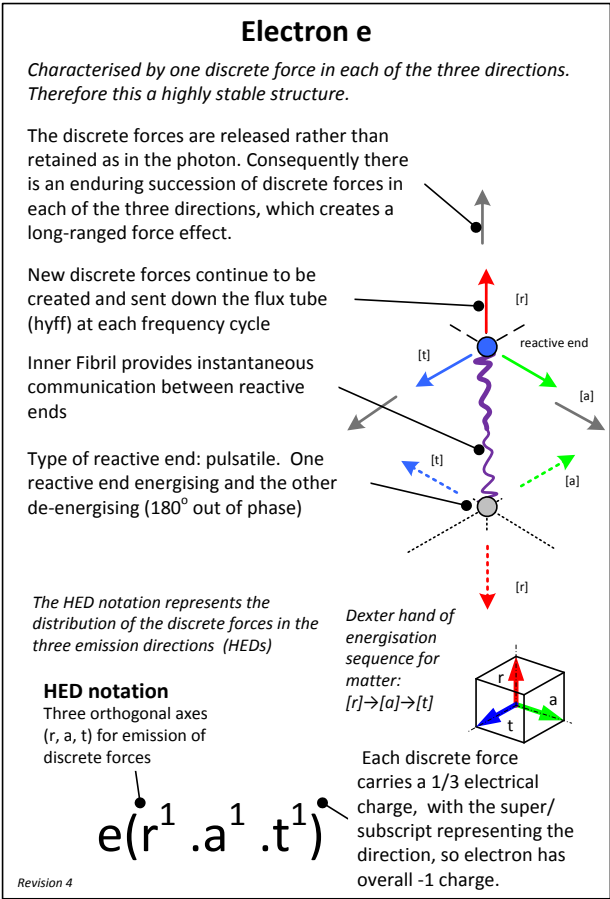


Figure 2: Predicted inner structures of the electron. From [23] with permission.

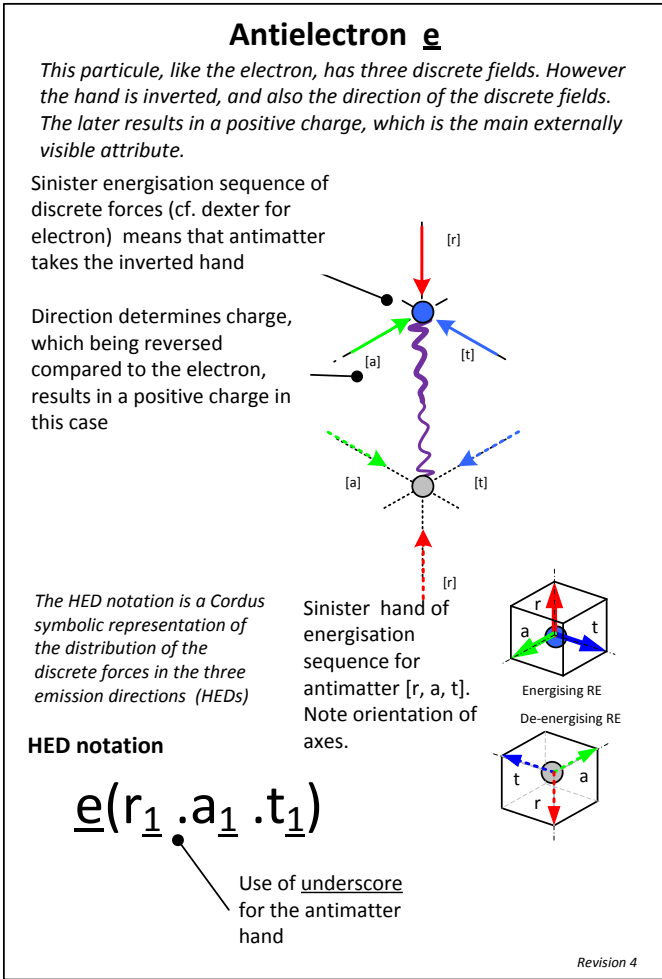


Figure 3: Predicted inner structures of the antielectron. From [23] with permission.

At this point a potential objection arises to the Cordus theory. This is that QCD can give rise to a flux tube but would not give rise to the proposed electron two-ended structure nor permit the proposed instantaneous communication between the spatially separated ends. The rebuttal is that the Cordus theory is not a version of quantum mechanics, and is not limited by what is admissible according to QCD or QFT. This is an unorthodox physics based on a NLHV design underpinned only by the premise of physical realism.

*Recovery of the evanescent and electrostatic fields*

Note the specific differences in the behaviour of the discrete forces between the photon and electron, as this is important in what follows. The photon emits and withdraws its discrete force in an oscillating manner. Consequently the field of the photon recruits a volume of space, which is consistent with the observation that the evanescent field scales as  $e^{-r}$ . The electron, in contrast, is proposed here to continue to emit new discrete forces outwards. Therefore its field dilutes over the area of a sphere. This too is consistent with the observation that the electro-magneto-gravitational (EMG) fields scales as  $r^{-2}$ . So the Cordus theory recovers both the evanescent field of the photon and the electrostatic field of the electron.

Thus the nature of discrete forces emitted by the photon and electron are proposed to be very different. This begins to explain why the photon and electron do not spontaneously



transform from one to the other: they are not similar states that can randomly jump from one to the other in some Markov-like process. The next challenge is to explain how the transformation occurs.

#### 4.2 *Production of an electron-antielectron pair*

Here we show how photons may be converted to an electron and antielectron. We represent this in two ways, first by considering the interactions of individual discrete forces, and then using HED notation.

The overall process is shown in Figure 4. This is a systems engineering representation in integration definition zero (IDEF0) notation [26] and shows a process with inputs at left of the activity block, outputs at right, and mechanisms entering from beneath.

Pair production is commonly represented as involving a single input photon interacting with matter, hence processes (6) and (7) in the figure. The absorption (6) and emission (7) interactions with matter can readily be represented in the NLHV framework of the Cordus theory. Therefore we can put aside the initial matter interaction, and focus is on the subsequent transformation processes. The main pair production activities therefore start with two separate photons, each with oscillating reactive ends, that are close together (1). The proximity causes distress in access to emission directions (HEDs), and the reactive ends respond to these constraints (2). The mechanism by which they achieve this is renegotiation of emission directions. This requires the discrete forces and hence reactive ends, to change to accommodate. This is an application of the synchronous interaction (strong force) [19]. The reactive ends then develop 3D HED structures (3) in the  $[r, a, t]$  directions. Since HED emissions define the type of particule, new particule identities emerge (4) for the available HEDs. The discrete field structures (HEDs) separate into complementary hands, matter and antimatter [22]. This is driven by stability requirements. Consequently handed discrete force structures emerge, and these are the antielectron and electron emerge (5).

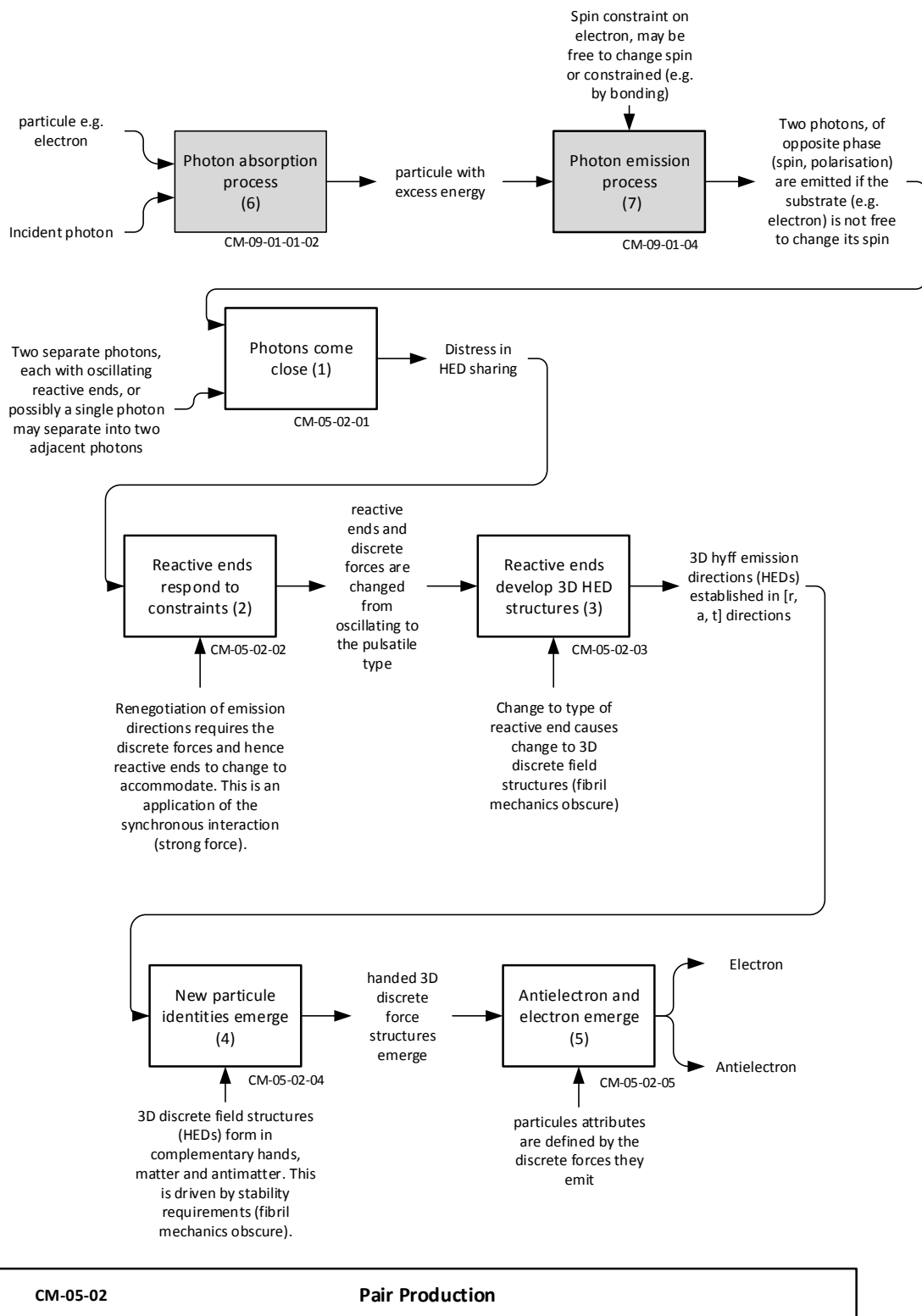
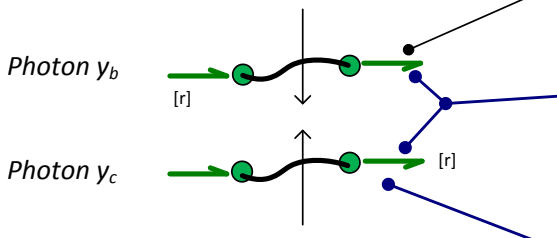


Figure 4: Activities in the pair-production process.

The process is further detailed, at the level of discrete forces, in Figures 5 and 6 which show the proposed three-dimensional (3D) field-model. In essence, the incoming photons are unable to negotiate shared use of the field emission directions (HEDs) (1.3). Their difficulty is that the oscillating discrete forces are simultaneously active at *all* reactive ends, and are trying to recruit the same volume of space. To put it another way, the evanescent fields are

in conflict. Nor can the photons evade each other. So they are forced to convert to the pulsatile type of reactive end instead (2.1). This type has one reactive end active and the other dormant, and it emits and releases its discrete forces (as opposed to recruiting a volume of space), so it is much easier to satisfy the constraints. The process also creates a new fibril to coordinate the new pairs of reactive ends (2.2). This type also requires three emission directions, so a 3D field structure is set up (3.1) according to the hand system (4.1). The particule identities, electron and antielectron, emerge as a consequence of the changes to the discrete force structures (5.1, 5.2).

**(1) Photons come close**



CM-05-02-01

1.1 Photons  $\gamma(r \uparrow \cdot a \cdot t)$  incident on each other, same frequency, and in same phase (could be considered opposite phase since they are moving in opposite directions)

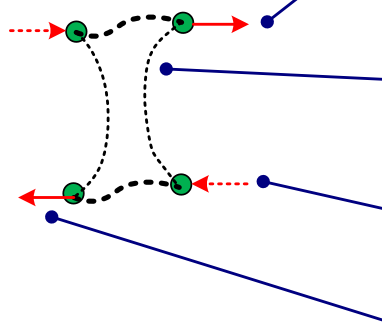
1.2 When photons are sufficiently close, distress arises because their HEDs compete for rights to emit into the fabric in the situation.

1.3 Complementary sharing of the HED is not possible, not with an oscillating reactive end where both ends are simultaneously active. Usually particles in this situation would repel each other, but the velocity or proximity prevents it.

**(2) Reactive ends respond to constraints**

CM-05-02-02

Transient assembly structure



2.1 The constraints are too great. Therefore the renegotiation of HEDs has to go deeper, so the reactive ends are changed to the pulsatile type (one side active then the other).

2.2 The results of the negotiation are to coordinate emissions between the four reactive ends. This creates [mechanism uncertain] a short-circuit protofibril between them, which instantly communicates and co-ordinates the discrete forces

2.3 One discrete force has to become dormant, and the other active, to satisfy the constraints.

2.4 Similar structures emerge on the other side, with complementary directions of discrete forces. Complementary regarding both charge (direction of discrete force) and frequency state (active vs. dormant)

**(3) Reactive ends develop 3D HED structures**

CM-05-02-03

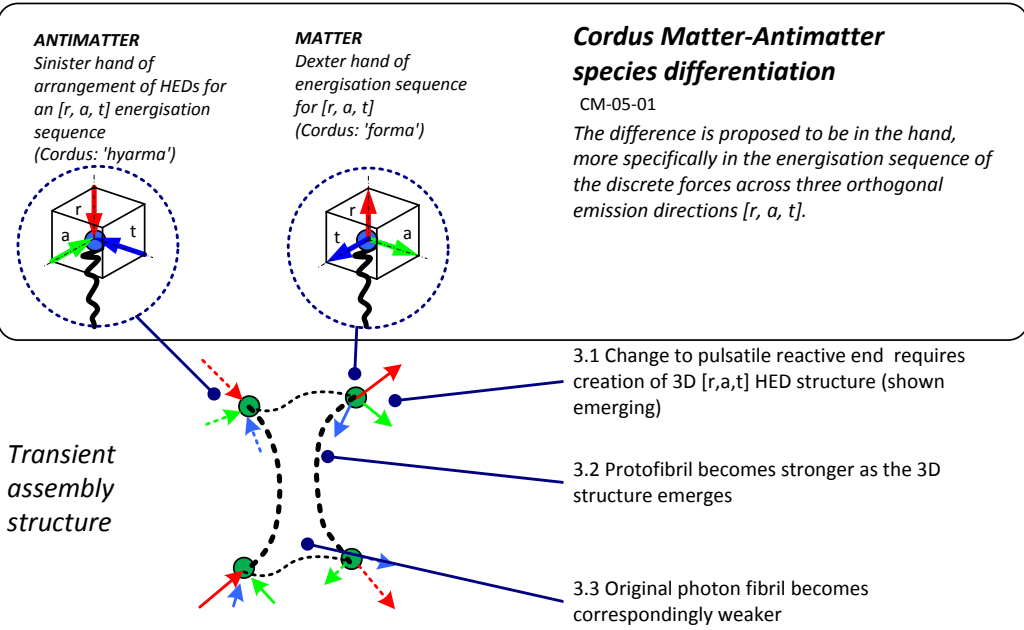
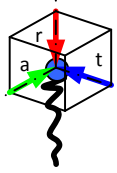
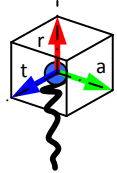


Figure 5: Details of the proposed discrete force remanufacturing processes in the initial stages of pair production.

**ANTIMATTER**  
Sinister hand of  
arrangement of HEDs for  
an [r, a, t] energisation  
sequence  
(Cordus: 'hyama')

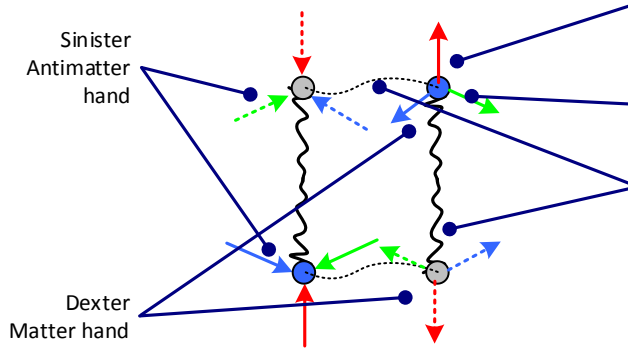


**MATTER**  
Dexter hand of  
energisation sequence  
for [r, a, t]  
(Cordus: 'forma')



**(4) New particule identities emerge**

CM-05-02-04



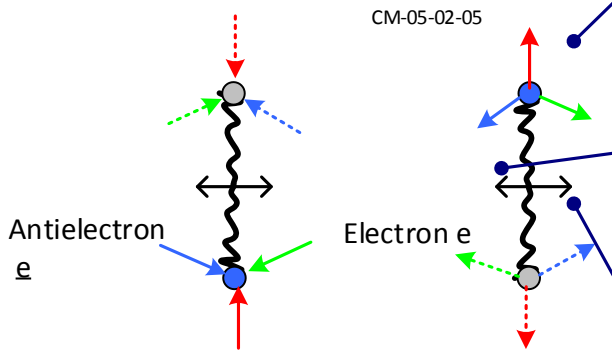
4.1 Hyff emission directions (HEDs) are formed in a hand, i.e. an energisation sequence. There are only two such sequences, hence matter and antimatter species.

4.2 Outward discrete forces take the dexter hand, not sinister, for reasons given in the text.

4.3 New fibrils becomes stronger, old ones weaken and finally disappear

**(5) Antielectron and electron emerge**

CM-05-02-05



5.1 HED form determines structure, in this case ( $r^1 a^1 t^1$ ) is an electron

5.2 A HED structure of ( $r_1 a_1 t_1$ ) is an antielectron

5.3 These particules could bond to form parapositronium and then annihilate, unless parted.

5.4 The length of the span may vary dynamically with frequency cycle, even if shown here as a static length. We assume that this or another effect causes an elastic recoil and separation of the two particules.

Figure 6: Discrete force remanufacturing processes proposed for the later stages of pair production.

Examining the remanufacturing process at the level of discrete forces is interesting, and shows that it is possible to provide a natural explanation for pair production. However it is also useful to have a simplified representation of the process, which we provide next.

4.3 Simplified representation of pair production

Here we show a simpler and more efficient means of representing the process of pair production, using HED mechanics and its notation [24]. This is a mathematical formalism for the discrete fields in the Cordus theory. Application of the HED mechanics gives:

$$2\gamma = \gamma_b(r^\downarrow .a .t) + \gamma_c(r^\downarrow .a .t) \tag{E1.1}$$

$$\Rightarrow O(r^1_1 .a^1_1 .t^1_1) \tag{E1.2}$$

$$\Rightarrow e(r^1 .a^1 .t^1) + \underline{e}(r_1 .a_1 .t_1) \tag{E1.3}$$

$$\Rightarrow e + \underline{e} \quad (E1.4)$$

This is because previous work [24] identifies that two photons corresponds to a discrete force structure represented by  $(r_{\perp}^1 . a_{\perp}^1 . t_{\perp}^1)$ , hence the O transitional assembly above (E1.2). This assembly is driven by the synchronous interaction [19] to partition into more stable HED structures (E1.3). These structures, by inspection, are the electron and antielectron. Thus it is relatively simple to use HED notation to represent the overall remanufacturing process of pair production. The HED mechanics are for this NLHV design what Feynman diagrams are to QM, and the representations are not incompatible, though they have different levels of detail.

## 5 Discussion

### 5.1 Outcomes

This paper makes the novel contribution of providing a conceptual theory for how the evanescent field structures of the photon may be reassembled into an electron and antielectron. This has otherwise not been achieved with any of the other theories of physics, neither quantum mechanics, string/M-theory or classical electro-magnetic wave theory. Pair production represents one of the two process-directions in mass-energy equivalence, so provision of a natural explanation is an important conceptual development in foundational physics.

Another contribution is that this theory for pair production is logically consistent with a wider conceptual development for a new physics at the next deeper level below quantum mechanics and general relativity. This theory now has a logically consistent set of explanations for pair production (this paper), beta decay processes [24], the internal structure of the neutrino [ibid], annihilation processes [23], synchronous interaction (strong force) [19], internal structure of the nucleus atomic nuclides including all the nuclides from hydrogen to neon [20], time dilation [21], and asymmetrical baryogenesis [27]. In totality this demonstrates that the idea of discrete fields, coupled with a hidden variable structure, reinvigorates the hidden sector that has otherwise been quiescent for decades.

It provides novel insights into processes at the next deeper level of physics, and shows a candidate route to a new physics that spans particles, time, and gravitation. According to this perspective quantum mechanics is not wrong, but is simply a stochastic approximation to a deeper determinism at the hidden-variable level. Quantum mechanics is a coarse level of abstraction which approximates the two ended Cordus particule by a zero-dimensional point, with physical attributes such as spin being represented by mathematical 'intrinsic variables'. In a similar manner general relativity (GR) and gravitation are not wrong, but instead the Cordus theory shows that they can be understood as higher-level abstractions of discrete field phenomena. Thus time is a dimension in general relativity, whereas the Cordus theory shows that time can be understood as an emergent property of matter that is mediated via the discrete fields [21], and only appears to be a dimension of space-time at a coarse level of scrutiny. The arrow (one-way direction) of time and the origins of entropy are also explained by the Cordus theory, whereas these are difficult problems for both QM and GR.

## 5.2 Implications and interpretations

### *Polarisation dependency*

There are several parts of this theory that are noteworthy. First, note that this theory requires two photons (not one) for the production of an electron-antielectron pair, and predicts that they need to be in complementary phases, i.e. opposite polarisation. The higher the energy the shorter the energisation cycles (higher frequency) and the more important it is for the photons to be pre-supplied in a state amenable to pair-production, hence opposite polarisation. This is a specific prediction, and afterwards we have found that it is consistent with the observational reality, though that was not known at the outset of this development. The effect has a conventional explanation in terms of angular momentum, so we cannot claim it as a unique prediction of our theory. Nonetheless it can be stated that the theory proposed here does recover the dependency of opposite polarisation, and can explain why it is more pronounced at higher energies.

### *Prediction of Real vs. Not-Real species differentiation*

Note that we assumed that the outward discrete forces take the dexter hand, not sinister, at 4.2. We did this to avoid the formation of a peculiar configuration of discrete fields at step 5.2. This structure is not the usual matter-antimatter species differentiation but rather a solid-hole species type. These are the field configurations of  $(r_1 .a_1 .t_1)$  and  $(r_1^\perp .a_1^\perp .t_1^\perp)$ , which we term the positive notElectron  $!e(r_1 .a_1 .t_1)$  and negative antiNotElectron  $\underline{!e}(r_1^\perp .a_1^\perp .t_1^\perp)$ . We term these substances Not-Real matter. The selection of the Real as opposed to Not-Real production path may be justified by noting that under this theory the fabric of the universe, which comprises the discrete forces of all the particules in the accessible universe [25], is dominated by matter [27]. Hence dexter-handed discrete forces prevail in the fabric of the environment, so it is natural that the pair-production process should be compliant therewith. This also means that the Cordus theory proposes another form of inversion to the existing two of negative-positive charge, and matter-antimatter hand [22], this time an orthogonal Real vs. Not-Real species differentiation.

### *Recovery of electron holes*

The theory provides an explanation for electron holes. The Not-Real matter is peculiar but not fundamentally problematic. Instead it is interpreted as *holes* in a sea of coherent electrons (for  $!e$ ) or antielectrons ( $\underline{!e}$ ). If one electron is missing in a network of electrons, e.g. in a superconductor or local region of coherent electrons, then the fields inside that hole correspond to the fields of the neighbouring electrons, but reversed in direction. The *hand* of those fields is therefore unchanged. So according to the Cordus theory, this hole is not antimatter but an absence of matter, and behaves like a particule in its ability to move around. In other words these are empty locations where there are no reactive ends, but instead the discrete forces of the surrounding particules protrude into the hole. Consequently the hole *does* have an electric field structure and can interact accordingly, though its life is bound up with the fluid of particules around it. In this way the conduction of current by holes is recovered by the Cordus theory. These holes have been physically observed, so that part is not contentious. The novel contribution is providing physical explanations for these structures.

### *Pair-production and annihilation are complementary processes*

Note that the output electron and antielectron particles could bond to form parapositronium and then annihilate back to photons (stage 5.3). Annihilation too is described in this theory: see [23] for the corresponding Cordus theory for para- and ortho-positronium annihilation processes. To avoid annihilation, the pair products must be parted before they form such bonds. We have not worked out the *parting mechanism* in detail. Our current concept is that an elastic recoil (see below) and separation of the two particles occurs, due to the way the span varies dynamically with frequency cycle (5.4). However this is tentative.

### *Other routes to pair-production*

This pair-production process has been developed for the case of a collision between two photons. Another common situation in which pair-production occurs is the collision of a photon beam with say an electron. We suggest this can be accommodated within the theory by assuming the electron absorbs and then re-emits the photon. There are then multiple routes to pair production: either (a) the electron emits two photons, (b) a single photon is emitted and collides with another photon in the incoming beam, or (c) the energy emitted by the electron progresses directly into the emission of the discrete field structures of another electron and an antielectron, without passing through the photon stage. Variants of these have been identified [28]. In this three-fermion process the original electron experiences a recoil, which either (b) or (c) could explain. However of more interest is the nature of the recoil, which is dealt with next.

### *Direction of recoil*

The theory explains the direction of recoil. Others have shown that the orientation of recoil depends on the polarisation of the incoming photons, and does *not* depend on the photon energy [28]. Such results are difficult to interpret using QM, for which polarisation is merely an intrinsic variable without physical embodiment. However the Cordus theory readily allows an appreciation of the issues, since the span of the particle is an important orientation variable. Thus the Cordus theory interprets both photon polarisation and electron spin as orientation of the main fibril of the respective particle. It is therefore natural to expect that the relative orientation of the photon and the target electron will determine the outcomes. In a similar way the Cordus theory has also explained basic optical polarisation effects such as Brewster's angle [18], though in those cases it is the relative orientation of the photon and the optical plane that is important (the optical plane is interpreted as an aggregate of the orientations of multiple electrons in the substrate). Furthermore, the Cordus theory for photon emission makes the interesting prediction that the photon is emitted in a direction orthogonal to the electron span [29]. Thus, it is understandable that the orientation of the photon, hence polarisation, will affect the recoil of the host electron. The Cordus theory therefore accommodates and conceptually explains why the recoil should be dependent on and transverse to the incoming photons [30]. This is consistent with the observation that 'the azimuthal distribution of the recoil electron is highly sensitive to the polarization of the incoming gamma radiation' [28], and also consistent with the theoretical indications of polarisation-dependency [31]. Similar highly anisotropic recoil behaviour is also empirically evident in collisions occurring within an aligned molecular framework [30]. The dependency is so strong that it may be used in the inverse direction, as a measurement of photon polarisation [32]. Our comment in this



regard is that the mathematical models predict the effect, and it is empirically observed. Yet an interpretation is difficult to make from within the 0-D point paradigm, whereas this is much easier from the NLHV solution provided by the Cordus theory. Likewise known other minor effects, like heavier atoms being more prone to pair production, can also be more easily explained when particles are acknowledged to have physical size, as here [20].

So the theory presented here provides a number of clear and unique theoretical predictions, and identifies the implications for experiments in an unambiguous way.

### 5.3 *Limitations and future research*

The theory is limited in being primarily conceptual. It does not provide the level of quantitative formulation for pair production as given by quantum field theory. Consequently some have criticised the present theory and laid a heavy burden to (a) show how the theory quantitatively reproduces empirical results, (b) explain how it reduces to a QFT, (c) show what problem it solves that is otherwise not explained by a QFT, and (d) provide testable and falsifiable predictions. However this is an unreasonable expectation given the early state of this theory and the limited number of people working on it compared to the vast resources of labour that have been spent on QFTs over an extended period of about a century. The present purpose was therefore not to attempt an irrefutable overthrow of QFT, but rather the more modest but nonetheless challenging objective of seeking to explain pair-production from the non-local hidden-variable (NLHV) sector. The theory is therefore still in the conceptual stage and does not yet have a mathematical formalism beyond its HED mechanics, nor it is able to provide numerically modelling of results. For example, the theory qualitatively describes the pair production process at the level of discrete fields, which is one channel of mass-energy equivalence, but does not quantify the relationship. These developments are left for future research as the concept matures.

There are also several streams of potential future work on the conceptual front. We have only considered electron-antielectron pair production, and there are other outcomes to consider, including the landscape of pions, kaons, etc.

Another research opportunity is to analyse asymmetrical genesis with this theory. This has been done and the results offer a solution to this problem too, a solution that is profoundly different to all other solutions and yet simple at its root [27].

## 6 **Conclusions**

A conceptual theory has been created within the NLHV framework of the Cordus theory, for the processes of electron-antielectron pair-production. The explanation is given in terms of the remanufacture of the discrete fields of the photon into those of the electron and antielectron, and the corresponding emergence of the inner structure of those particles. This is a significant outcome in that it provides an ontological explanation for mass-energy equivalence. The present paper has anticipated what the pair-production processes could look like in a NLHV solution, and annihilation, which is the inverse process, has also been demonstrated within this same framework. Thus the processes in both directions of mass-energy conversion have been explained. By comparison, quantum mechanics is unable to give an ontologically sufficient explanation for either of these processes. Consequently it is

also significant is that the explanation comes from the NLHV sector. This has otherwise not historically been a productive area in which to seek solutions. The hidden-variable sector is shown to have yielded an alternative theory of fundamental physics with excellent explanatory power under physical realism. It provides novel insights into processes at the next deeper level of physics, and shows a candidate route to a new physics that spans particles, time, and gravitation.

#### *Author Contributions*

All authors contributed to the creation of the underlying concept, development of the ideas, and production of the paper.

#### *Conflict of interest statement*

The authors declare that there are no conflicts of interest regarding the publication of this article. The research was conducted without personal financial benefit from any third party funding body, nor did any such body influence the execution of the work.

#### *Copyright*

Copyright for this article is retained by the author(s), with non-exclusive first publication rights granted to the journal. This is an open-access article distributed under the terms and conditions of the Creative Commons license Attribution 4.0 International (CC BY 4.0) <https://creativecommons.org/licenses/by/4.0/>

## References

1. Dirac, P. A. M., *The quantum theory of the electron*. Royal Society -- Proceedings, 1928. **117**(A778): p. 610-624. DOI: <http://dx.doi.org/10.1098/rspa.1928.0023>
2. Belkacem, A. and Srensen, A. H., *The pair-production channel in atomic processes*. Radiation Physics and Chemistry, 2006. **75**(6): p. 656-695. DOI: <http://dx.doi.org/10.1016/j.radphyschem.2005.03.003>.
3. Motz, J. W., Olsen, H. A., and Koch, H. W., *PAIR PRODUCTION BY PHOTONS*. Reviews of Modern Physics, 1969. **41**(4 pt 1): p. 581-639. DOI: <http://dx.doi.org/10.1103/RevModPhys.41.581>.
4. Hubbell, J. H., *Electron-positron pair production by photons: A historical overview*. Radiation Physics and Chemistry, 2006. **75**(6): p. 614-623. DOI: <http://dx.doi.org/10.1016/j.radphyschem.2005.10.008>.
5. Bethe, H. A. and Maximon, L. C., *Theory of Bremsstrahlung and Pair Production. I. Differential Cross Section*. Physical Review, 1954. **93**(4): p. 768-784. DOI: <http://dx.doi.org/10.1103/PhysRev.93.768>.
6. Breit, G. and Wheeler, J. A., *Collision of Two Light Quanta*. Physical Review, 1934. **46**(12): p. 1087-1091. DOI: <http://dx.doi.org/10.1103/PhysRev.46.1087>.

7. Hu, H., Muller, C., and Keitel, C. H., *Complete QED theory of multiphoton trident pair production in strong laser fields*. Physical Review Letters, 2010. **105**(8). DOI: <http://dx.doi.org/10.1103/PhysRevLett.105.080401>.
8. Osborne, L. S., *Simple model for electron pair production by muons*. Nuclear Instruments and Methods in Physics Research, Section A: Accelerators, Spectrometers, Detectors and Associated Equipment, 1992. **315**(1-3): p. 65-66. DOI: [http://dx.doi.org/10.1016/0168-9002\(92\)90681-s](http://dx.doi.org/10.1016/0168-9002(92)90681-s).
9. Nagata, Y. and Nitta, H., *Theory of Cerenkov pair production*. Physical Review A - Atomic, Molecular, and Optical Physics, 2003. **67**(4): p. 447011-447013. DOI: <http://dx.doi.org/10.1103/PhysRevA.67.044701>.
10. Rothwarf, A., *PLASMON THEORY OF ELECTRON-HOLE PAIR PRODUCTION: EFFICIENCY OF CATHODE RAY PHOSPHORS*. Journal of Applied Physics, 1973. **44**(2): p. 752-756. DOI: <http://dx.doi.org/10.1063/1.1662257>.
11. Dirac, P. A. M., *Physical interpretation of quantum mechanics*. Royal Society of London -- Proceeding, 1942. **180**(980): p. 1-40. DOI: <http://dx.doi.org/10.1098/rspa.1942.0023>
12. Krekora, P., Su, Q., and Grobe, R., *Interpretational difficulties in quantum field theory*. Physical Review A - Atomic, Molecular, and Optical Physics, 2006. **73**(2): p. 1-9. DOI: <http://dx.doi.org/10.1103/PhysRevA.73.022114>.
13. de Broglie, L., *Recherches sur la théorie des quanta (Researches on the quantum theory)*. Annales de Physique, 1925. **3**(10). DOI: <http://tel.archives-ouvertes.fr/docs/00/04/70/78/PDF/tel-00006807.pdf>.
14. Bohm, D. and Bub, J., *A proposed solution of measurement problem in quantum mechanics by a hidden variable theory*. Reviews of Modern Physics, 1966. **38**(3): p. 453-469. DOI: <http://dx.doi.org/10.1103/RevModPhys.38.453>
15. Bell, J. S., *On the Einstein Podolsky Rosen Paradox*. Physics, 1964. **1**(3): p. 195-200. DOI: <http://philoscience.unibe.ch/documents/TexteHS10/bell1964epr.pdf>.
16. Leggett, A., *Nonlocal Hidden-Variable Theories and Quantum Mechanics: An Incompatibility Theorem*. Foundations of Physics, 2003. **33**(10): p. 1469-1493. DOI: <http://dx.doi.org/10.1023/a:1026096313729>.
17. Groblacher, S., Paterek, T., Kaltenbaek, R., Brukner, C., Zukowski, M., Aspelmeyer, M., and Zeilinger, A., *An experimental test of non-local realism*. Nature, 2007. **446**(7138): p. 871-875. DOI: <http://dx.doi.org/10.1038/nature05677>.
18. Pons, D. J., Pons, A. D., Pons, A. M., and Pons, A. J., *Wave-particle duality: A conceptual solution from the cordus conjecture*. Physics Essays, 2012. **25**(1): p. 132-140. DOI: <http://physicsessays.org/doi/abs/10.4006/0836-1398-25.1.132>

19. Pons, D. J., Pons, A. D., and Pons, A. J., *Synchronous interlocking of discrete forces: Strong force reconceptualised in a NLHV solution* Applied Physics Research, 2013. **5**(5): p. 107-126. DOI: <http://dx.doi.org/10.5539/apr.v5n5107>
20. Pons, D. J., Pons, A. D., and Pons, A. J., *Explanation of the Table of Nuclides: Qualitative nuclear mechanics from a NLHV design*. Applied Physics Research 2013. **5**(6): p. 145-174. DOI: <http://dx.doi.org/10.5539/apr.v5n6p145>
21. Pons, D. J., Pons, A. D., and Pons, A. J., *Time: An emergent property of matter*. Applied Physics Research, 2013. **5**(6): p. 23-47. DOI: <http://dx.doi.org/10.5539/apr.v5n6p23>
22. Pons, D. J., Pons, A. D., and Pons, A. J., *Differentiation of Matter and Antimatter by Hand: Internal and External Structures of the Electron and Antielectron*. Physics Essays, 2014. **27**: p. 26-35. DOI: <http://vixra.org/abs/1305.0157>.
23. Pons, D. J., Pons, A. D., and Pons, A. J., *Annihilation mechanisms*. Applied Physics Research 2014. **6**(2): p. 28-46. DOI: <http://dx.doi.org/10.5539/apr.v6n2p28>
24. Pons, D. J., Pons, A. D., and Pons, A. J., *Beta decays and the inner structures of the neutrino in a NLHV design*. Applied Physics Research, 2014. **6**(3): p. 50-63. DOI: <http://dx.doi.org/10.5539/apr.v6n3p50>
25. Pons, D. J. and Pons, A. D., *Outer boundary of the expanding cosmos: Discrete fields and implications for the holographic principle* The Open Astronomy Journal, 2013. **6**: p. 77-89. DOI: <http://dx.doi.org/10.2174/1874381101306010077>.
26. FIPS. *Integration Definition for Function Modeling (IDEF0)*. 1993 [12 Aug 2003]; Available from: <http://www.itl.nist.gov/fipspubs/idef02.doc>.
27. Pons, D. J., Pons, A. D., and Pons, A. J., *Asymmetrical genesis by remanufacture of antielectrons*. Journal of Modern Physics, 2014. **5**: p. 1980-1994. DOI: <http://dx.doi.org/10.4236/jmp.2014.517193>.
28. Depaola, G. O. and Iparraguirre, M. L., *Angular distribution for the electron recoil in pair production by linearly polarized - rays on electrons*. Nuclear Instruments and Methods in Physics Research, Section A: Accelerators, Spectrometers, Detectors and Associated Equipment, 2009. **611**(1): p. 84-92. DOI: <http://dx.doi.org/10.1016/j.nima.2009.09.010>.
29. Pons, D. J., *Photon emission explained in a NLHV design*. Vixra archive, 2014. **1206.0047**: p. 1-16. DOI: <http://vixra.org/abs/1206.0047>.
30. Elkharrat, C., Picard, Y. J., Billaud, P., Cornaggia, C., Garzella, D., Perdrix, M., Houver, J. C., Lucchese, R. R., et al., *Ion pair formation in multiphoton excitation of NO2 using linearly and circularly polarized femtosecond light pulses: Kinetic energy distribution and fragment recoil anisotropy*. Journal of Physical Chemistry A, 2010. **114**(36): p. 9902-9918. DOI: <http://dx.doi.org/10.1021/jp103672h>.

31. Krajewska, K. and Kaminski, J. Z., *Recoil effects in multiphoton electron-positron pair creation*. Physical Review A - Atomic, Molecular, and Optical Physics, 2010. **82**(1). DOI: <http://dx.doi.org/10.1103/PhysRevA.82.013420>.
32. Akushevich, I. V., Anlauf, H., Kuraev, E. A., Shaikhatdenov, B. G., and Ratcliffe, P. G., *Triplet production by linearly polarized photons*. Physical Review A - Atomic, Molecular, and Optical Physics, 2000. **61**(3): p. 327031-327037. DOI: <http://dx.doi.org/10.1103/PhysRevA.61.032703>