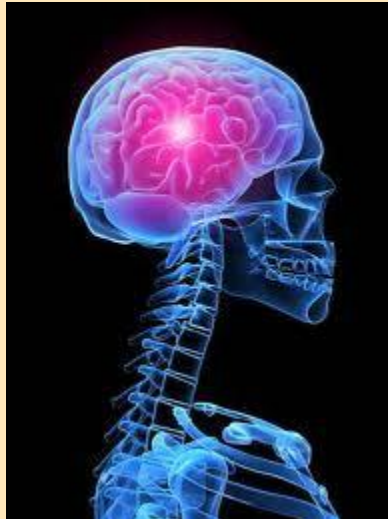


Neurological Brain Cells



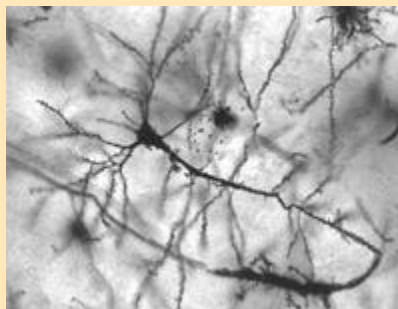
What are they?

Neurological brain cells are Neurotransmitters or the other cells that come from the nervous system. They are very important to the brain, spinal cord, and all movement. Without Neurological brain cells we can not survive.



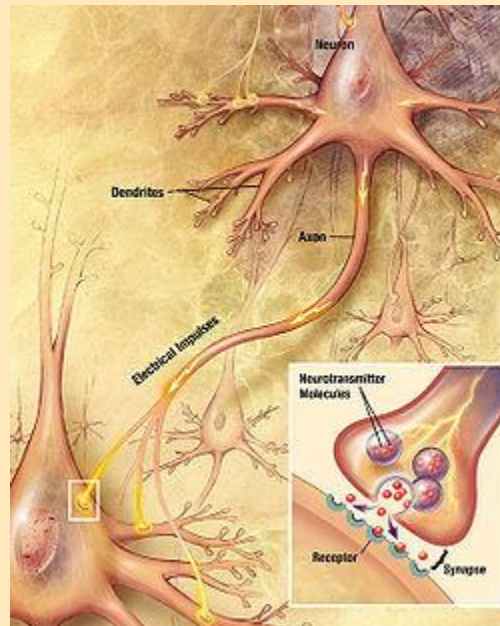
How are Neurological disorders caused?

Although causes vary, the main cause is when Neurological brain cells are deformed or damaged causing a disorder in the brain. This then may cause you to be paralyzed or have weird brain wave and behavior patterns.

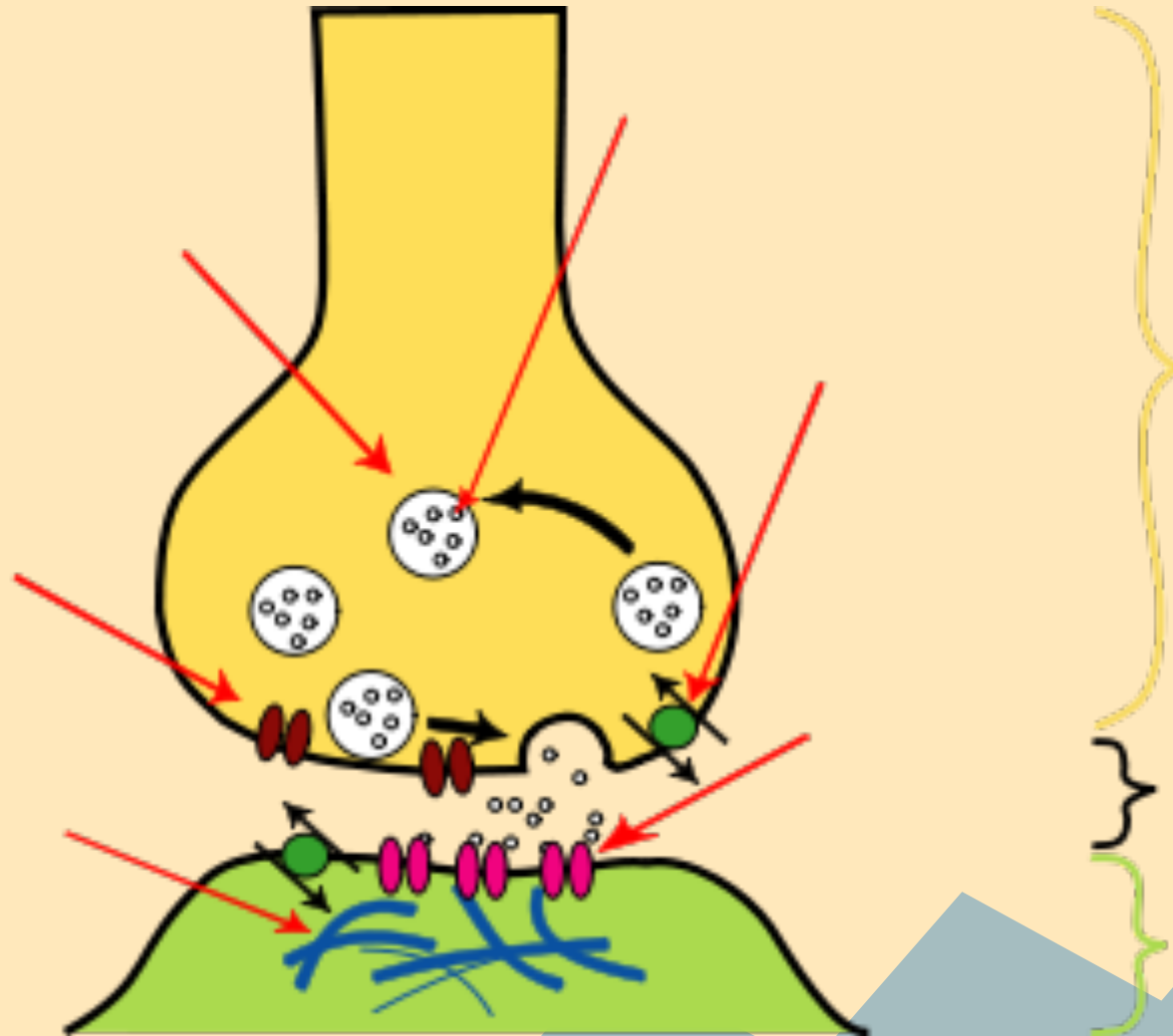


What are the parts of a brain?

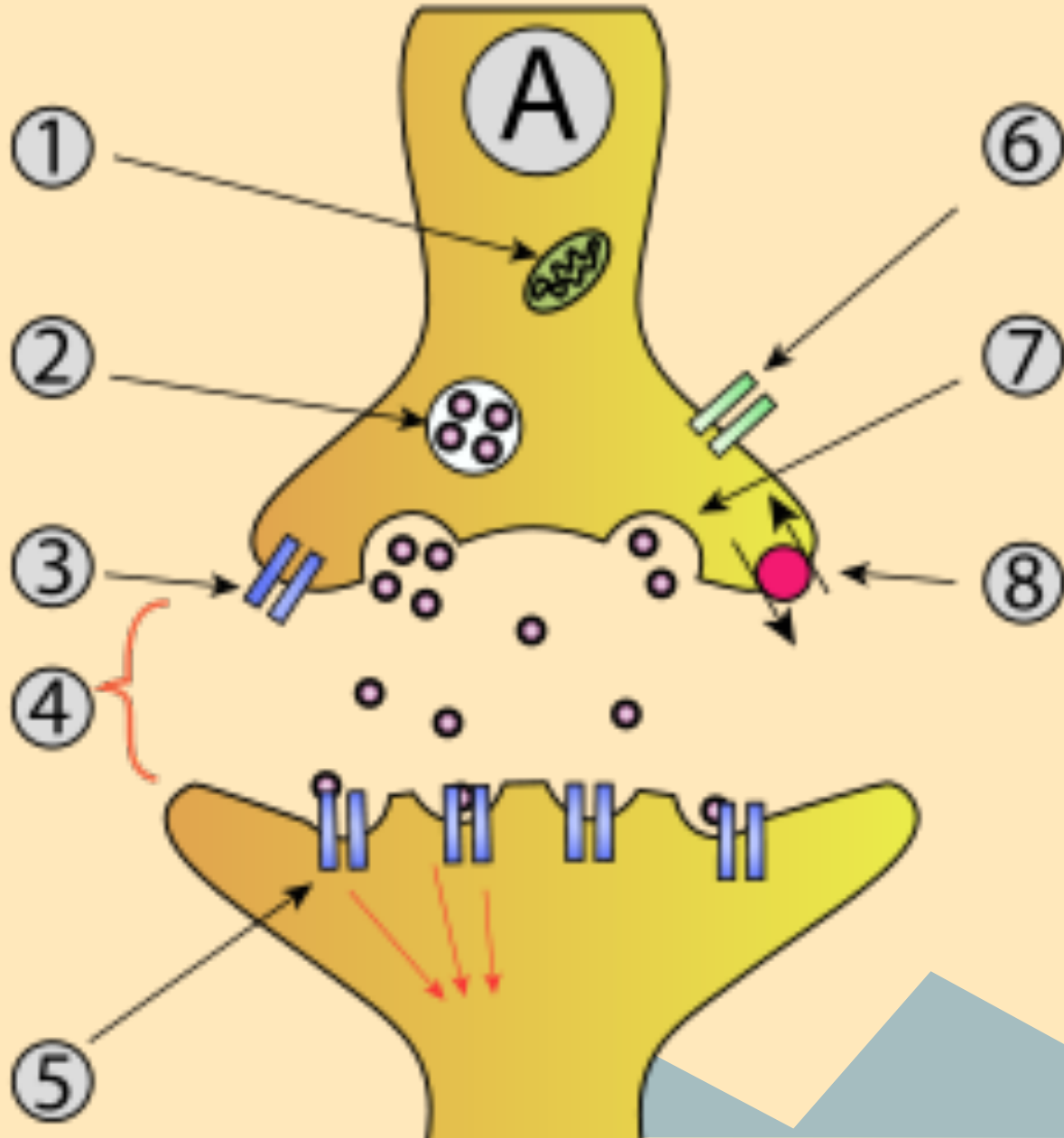
The main parts are the: Medulla, Pons, Hypothalamus, Thalamus, Cerebellum, Optic Tectum, Pallium, Hippocampus, Basal Ganglia, Olfactory Bulb.



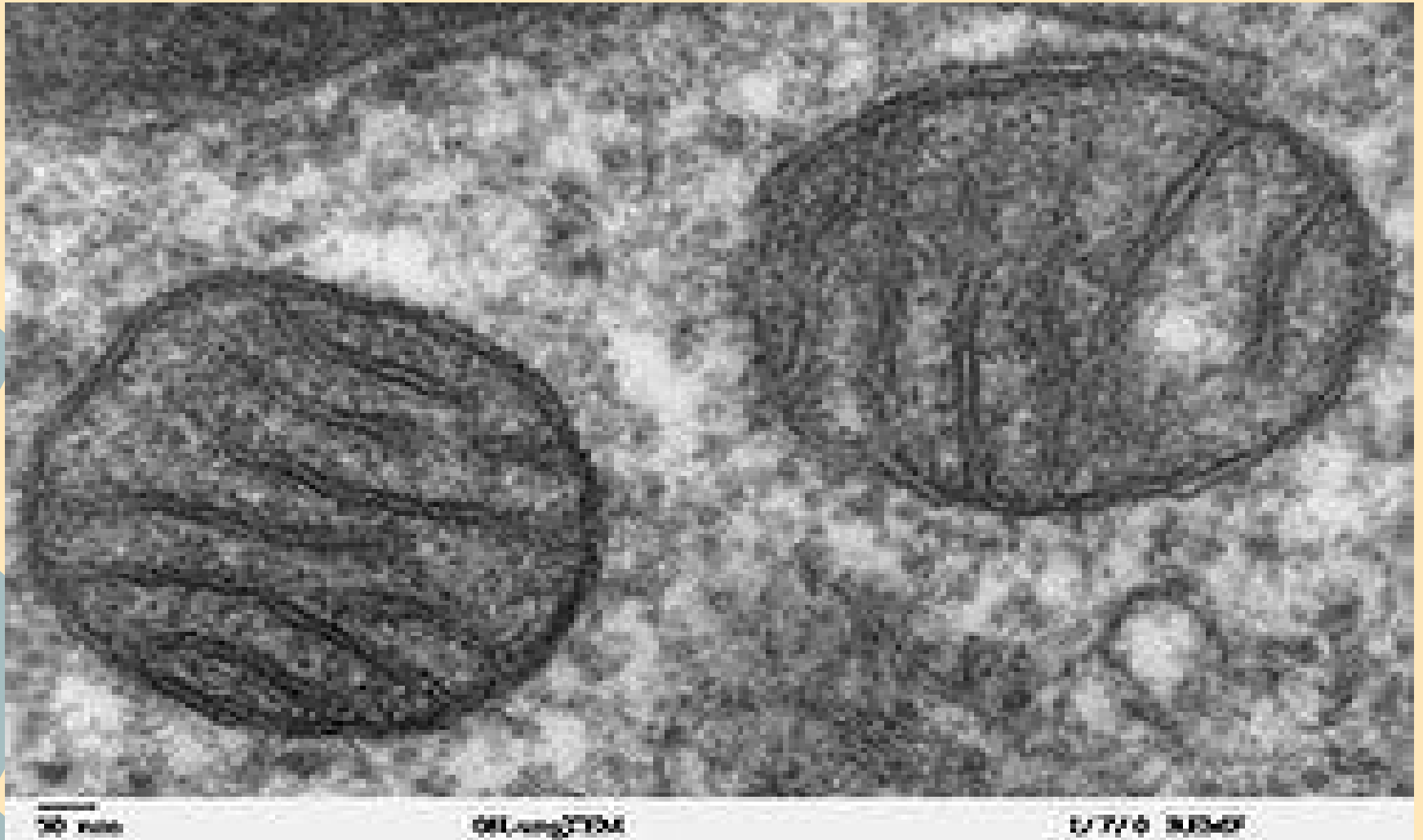
Structure of a typical Chemical Synapse



Synaptic Vesicle



Mitochondrion

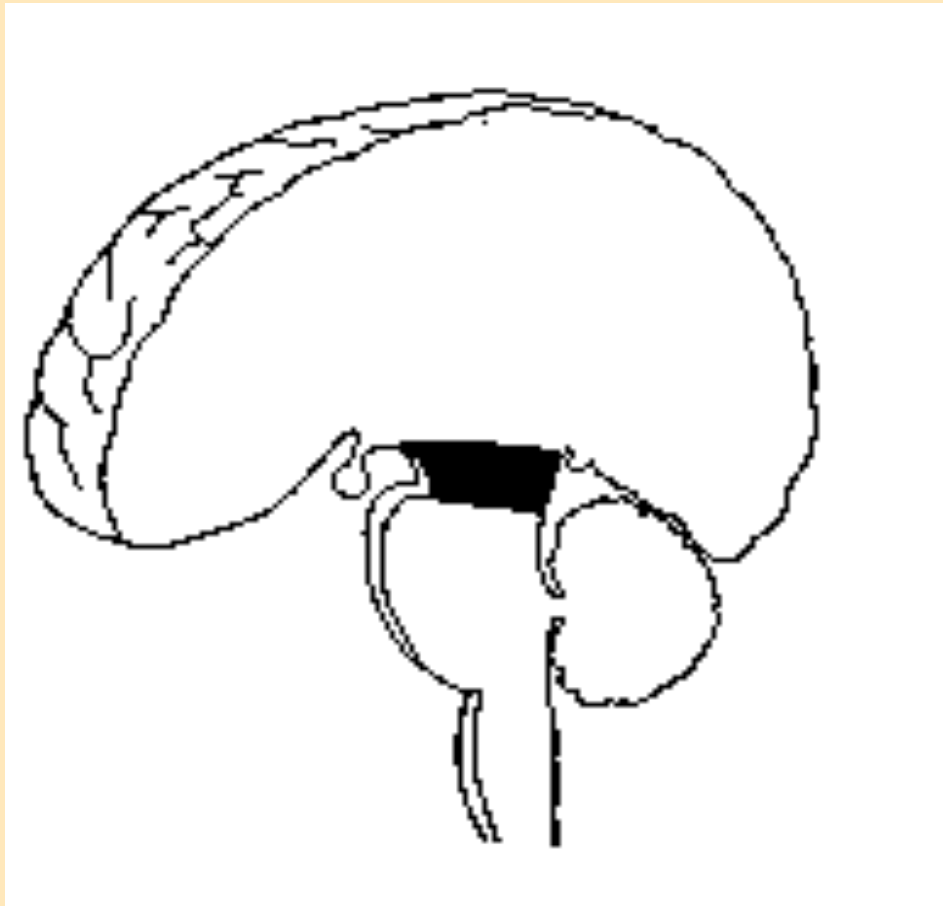


Structures

There are three structures: **The Forebrain** ----- **The Midbrain** ----- **The Hindbrain.**



- The Midbrain



Sources:

Discovery Channel's 2010 Guide on Brain Cells

